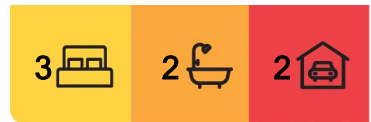




Upper Coomera, 2/5 Prewett Street

BIG VACANT DUPLEX!



Welcome to 2/5 Prewett Street! This charming double-storey duplex in Upper Coomera offers the ideal blend of comfort, convenience, and low-maintenance living, making it perfect for families at any stage of life. Whether you're just starting out or looking to downsize, this home has something for everyone.

The first level alone is spacious and inviting, designed for family gatherings and entertaining guests with multiple living area and a private patio. The secure patio provides a wonderful outdoor space for relaxing or hosting alfresco meals in complete privacy. The home is set in a quiet, family-friendly neighbourhood, just a short walk from several parks and playgrounds, making it perfect for families with children or pets.

Features

- Master Bedroom with Ensuite



Disclaimer: All information contained therein is gathered from relevant third parties sources. We cannot guarantee or give any warranty about the information provided. Interested parties must rely solely on their own enquiries.

For Sale
Contact Agent

View
ljhooker.com.au/AAJ0C

Contact
David Brown
0432 010 020
david.brown@ljhooker.com.au

Lucas Rupp
0406 249 324
lucas.rupp@ljhooker.com.au

LJ Hooker Oxenford
(07) 5632 8428

- Two Additional Bedrooms with ceiling fans and built-in robes
- Main Bathroom —Separate shower, bath, and toilet for added convenience.
- Double Lock-up Garage plus extra driveway parking.
- 2 Separate Living Areas
- Central Kitchen for easy entertaining & access
- Secure Patio for outdoor relaxation or entertaining in privacy.
- Air-conditioning split-system & Fans
- Low-Maintenance Garden providing privacy and minimal upkeep

Position

- Coomera Anglican College 900m
- Assisi 700m
- Coomera Square Shopping 1.2km
- Westfield 2.2km
- COSTCO 2.3km

Ideally situated in the heart of Upper Coomera, this home offers unbeatable convenience, with just a 5-minute drive to local amenities like Coomera Square, the aquatic centre, Medical Centre and more. Families will love the close proximity to Upper Coomera State School and Assisi Catholic College, which are easily accessible by car, bus, walking, or cycling. For entertainment and lifestyle options, nearby suburbs offer Westfield Shopping Centre, major theme parks, and plenty of outdoor activities. Commuters will also appreciate the quick access to Coomera Train Station and the motorway, making travel to the city effortless.

Discover the essence of family living! It's spacious and stylish, offering a comfortable lifestyle. With great features and a fantastic location, this property is a great opportunity. Contact us now to see it for yourself and enjoy a fantastic living experience.

Disclaimer:

We have in preparing this information used our best endeavours to ensure that the information contained herein is true and accurate, but accept no responsibility and disclaim all liability in respect of any errors, omissions, inaccuracies or misstatements that may occur. Prospective purchasers should make their own enquiries to verify the information contained herein.

More About this Property

Property ID	AAJOC
Property Type	DuplexSemi-detached
Land Area	225 m ²

David Brown 0432 010 020

Principal | LREA | david.brown@ljhooker.com.au

Lucas Rupp 0406 249 324

Sales Associate to David Brown | lucas.rupp@ljhooker.com.au

LJ Hooker Oxenford (07) 5632 8428

13/5 Michigan Drive, OXFENFORD QLD 4210

oxenford.ljhooker.com.au | oxenford@ljhooker.com.au

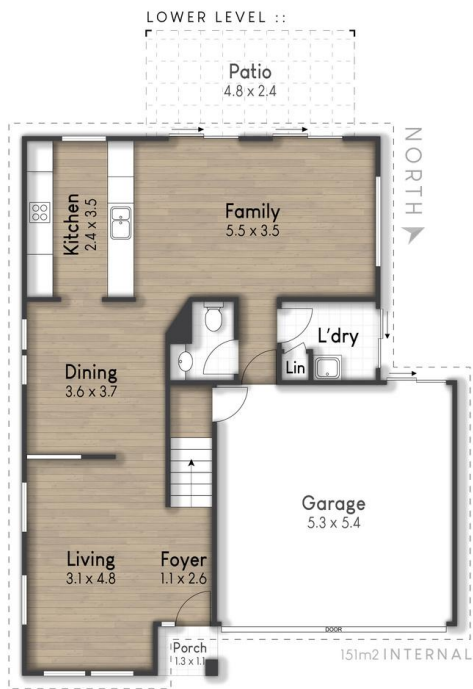


Disclaimer: All information contained therein is gathered from relevant third parties sources.

We cannot guarantee or give any warranty about the information provided. Interested parties must rely solely on their own enquiries.



LJ Hooker Oxenford
(07) 5632 8428



- 1 RESIDENCE
- 2 DREAMWORLD
- 3 COOMERA SPORTS COMPLEX
- 4 COOMERA WESTFIELD
- 5 HELENSVALE GOLF COURSE



Location Map

Prewett St, Upper Coomera

ED 3 BATH 2 CAR 2

Total: 151 m² | External: 13 m² | Approx Total: 164 m²

Whilst every attempt has been made to ensure the accuracy of the floor plan contained here, measurements of doors, windows, rooms and any other item are approximate and no responsibility is taken for any error, omission, or misstatement. This plan is for illustrative purposes only and should only be used as such by any prospective purchaser.