

Two Wells, 19 Longview Road

Welcome to Your Dream Home!

Auction Location: 19 Longview Road Two Wells

AUCTION: Onsite, Thursday the 3rd of October 2024 at 6:00pm

Built in 2021, this stunning home features four spacious bedrooms, including a master suite with a double walk-in robe and a luxurious ensuite complete with double basins and floor-to-ceiling tiles. The open-plan living area showcases elegant floating floors and large glass stacker doors that seamlessly connect indoor and outdoor entertaining spaces beneath a beautifully pitched pergola.

The modern kitchen is a chef's delight, equipped with high-quality stainless-steel appliances, including a dishwasher, gas cooktop, electric oven, pura tap and a generous walk-in pantry.



For Sale

Auction (\$799,000)

View

ljhooker.com.au/2ATTGJU

Contact

Donna Staines

0456 844 103

donnas@ljhsales.com.au



Disclaimer: All information contained therein is gathered from relevant third parties sources.

We cannot guarantee or give any warranty about the information provided. Interested parties must rely solely on their own enquiries.

**LJ Hooker Greenwith | Golden Grove
| Mawson Lakes | Modbury
(08) 8289 6660**

Set on a generous 1000sqm (approx.), this home offers added convenience with drive-through access to a 6 x 12 shed, ideal for storage or workshop use. Enjoy energy efficiency with a 10.7KW (approx.) solar system and a rainwater tank plumbed to the bathroom. Additional features include security cameras for peace of mind, roller shutters on the master and second bedroom and Mitsubishi reverse cycle heating and cooling for year-round comfort. A garden shed provides extra storage, making this property truly exceptional.

Features You'll Love:

- * Four bedrooms, including a master with a double walk-in robe and ensuite
- * Bedrooms two, three and four with built-in robes
- * Wide entry with 2.7m ceilings throughout
- * Automatic panel door
- * 10.7KW solar system (approx.) with optimized system/3-phase inverter
- * Downlights throughout

Located in the thriving suburb of Two Wells, this home offers effortless access to the North Expressway, making commuting a breeze. With its proximity to local shops and schools, it provides exceptional convenience for families while remaining just a short drive from Adelaide CBD, perfectly blending suburban tranquillity with easy urban access.

Don't miss your chance to make this dream home yours!

All information provided has been obtained from sources we believe to be accurate, however, we cannot guarantee the information is accurate and we accept no liability for any errors or omissions (including but not limited to a property's land size, floor plans and size, building age and condition). Interested parties should make their own enquiries and obtain their own legal and financial advice. Should this property be scheduled for auction, the Vendor's Statement may be inspected at either of our two LJ Hooker Property Specialists Real Estate offices for 3 consecutive business days immediately preceding the auction and at the auction for 30 minutes before it starts.

RLA 208516

More About this Property

Property ID	2ATTGJU
Property Type	House
House Size	212 m²
Land Area	1000 m²

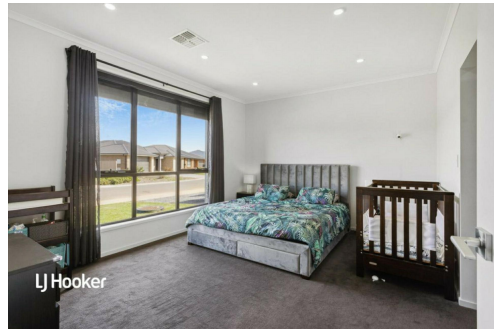
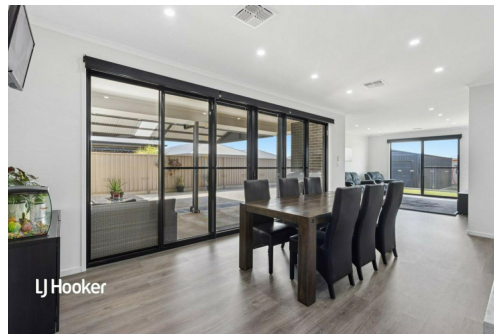
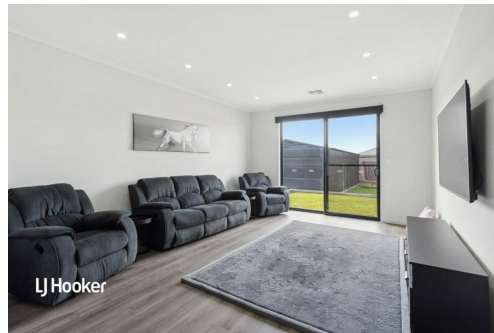
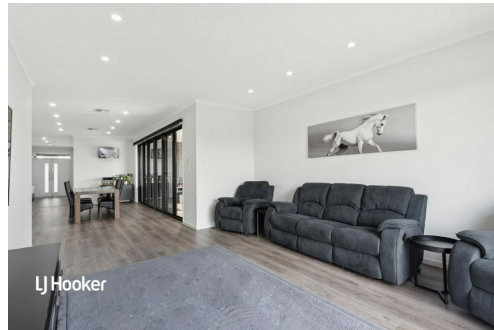
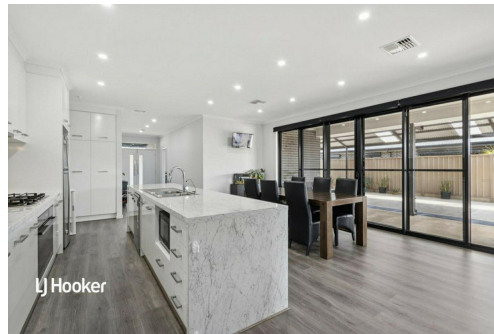
Donna Staines 0456 844 103
Sales Specialist | donnas@ljhsales.com.au

LJ Hooker Greenwith | Golden Grove | Mawson Lakes | Modbury (08) 8289 6660

North East, Shop 2, 1007 North East Road, RIDGEHAVEN SA 5097
greenwithgoldengrove.ljhooker.com.au | info@ljhsupport.com.au



Disclaimer: All information contained therein is gathered from relevant third parties sources. We cannot guarantee or give any warranty about the information provided. Interested parties must rely solely on their own enquiries.



**LJ Hooker Greenwith | Golden Grove
| Mawson Lakes | Modbury
(08) 8289 6660**



SITE PLAN
(NOT TO SCALE)

Scale in metres. This drawing is for illustration purposes only. All measurements are approximate and details intended to be relied upon should be independently verified.

Produced by The Fotobase Group