



## Twizel, 8 Greenfield Place

Looking Gorgeous on Greenfield

If 2 minutes to the golf course and 5 minutes to the boat ramp sounds like a bit of you then 8 Greenfield Place is one you don't want to miss.

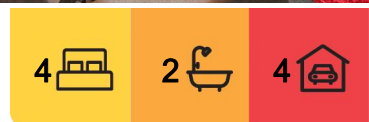
This well built 4 bedroom home has so much to offer. From the beautifully landscaped gardens, the extra double garage at the rear of the section, the campervan parking pad to the Archgola outdoor entertaining area, you will be hard pushed to find a more well equipped home.

The master bedroom has ensuite and walk in robe, plus ranch sliders out to the garden. The three other bedrooms are serviced by the family bathroom that even has a spa bath.

The heart of the home is a large, open plan area that is just perfect for entertaining. Wood burner and heat pump are there for all your heating and cooling needs and the heat transfer system ensures the whole house is kept cosy. Double glazed and well insulated,



**Disclaimer:** All information contained therein is gathered from relevant third parties sources. We cannot guarantee or give any warranty about the information provided. Interested parties must rely solely on their own enquiries.



**For Sale**  
Enquiries Over \$930,000

**View**  
[ljhooker.co.nz/DNPH5T](http://ljhooker.co.nz/DNPH5T)

**Contact**  
**Karan MacDiarmid**  
027 517 7959  
[karan@mcre.co.nz](mailto:karan@mcre.co.nz)

**Jess Mackay**  
027 902 5529  
[jess@mcre.co.nz](mailto:jess@mcre.co.nz)

**LJ Hooker Twizel**  
**(03) 435 0170**  
Mackenzie Country Real Estate

your home will be your haven even through the chilly Twizel winters.

The double attached garage has extra space for a workshop area or extra toy storage. And makes for easy access to the kitchen/living.

Vendors are on the move and are committed to the sale of their home. Their next chapter awaits them.

This stunning brick home will be a solid option within the Twizel market so make sure to get in touch with Karan and Jess to get more information and to arrange your private viewing.

House Size: 213m2

Land Size: 775m2

Zoning: Residential One

## More About this Property

Property ID	DNPH5T
Property Type	House
House Size	213 m <sup>2</sup>
Land Area	775 m <sup>2</sup>
Licensed Real Estate Agents (REAA2008)	

**Karan MacDiarmid 027 517 7959**

Salesperson | [karan@mcre.co.nz](mailto:karan@mcre.co.nz)

**Jess Mackay 027 902 5529**

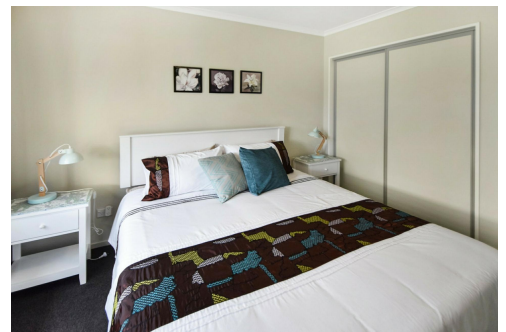
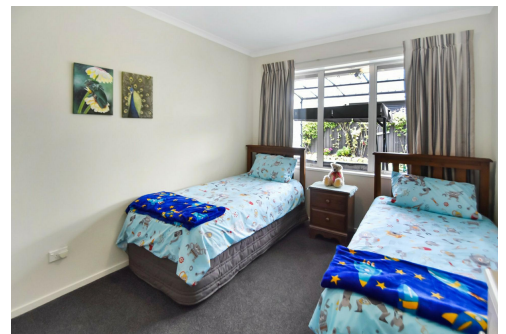
Salesperson | [jess@mcre.co.nz](mailto:jess@mcre.co.nz)

**LJ Hooker Twizel (03) 435 0170**

Mackenzie Country Real Estate

20 Ruataniwha Road, TWIZEL 7901

[twizel.ljhooker.co.nz](http://twizel.ljhooker.co.nz) | [twizel@mcre.co.nz](mailto:twizel@mcre.co.nz)



**Disclaimer:** All information contained therein is gathered from relevant third parties sources. We cannot guarantee or give any warranty about the information provided. Interested parties must rely solely on their own enquiries.

**LJ Hooker Twizel**  
**(03) 435 0170**  
Mackenzie Country Real Estate