



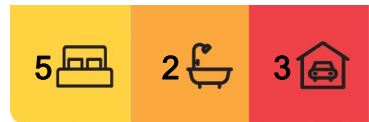
Twizel, 5 Homestead Avenue

Luxury Living in The Drive!

Introducing 5 Homestead Ave, an exquisite residence nestled in the esteemed suburb of The Drive. Boasting sophistication and luxury, this spacious home offers a blend of comfort and style, making it the epitome of refined living.

Featuring five generously sized bedrooms, providing ample space for family and guests. A dedicated office space adds an element of practicality, perfect for those who work or study from home. Combined with double glazing, wood burner and heat pumps make this a warm modern home to enjoy all year round.

The heart of the home lies in its gourmet kitchen and butler's pantry, a haven for culinary enthusiasts. Impeccably designed, these spaces are equipped with modern appliances and premium finishes, creating an ideal setting for both casual meals and grand entertaining.



For Sale
\$1,800,000

View
By Appointment

Contact
Karan MacDiarmid
027 517 7959
karan@mcre.co.nz

Jess Mackay
027 902 5529
jess@mcre.co.nz



LJ Hooker Twizel
(03) 435 0170
Mackenzie Country Real Estate

Disclaimer: All information contained therein is gathered from relevant third parties sources. We cannot guarantee or give any warranty about the information provided. Interested parties must rely solely on their own enquiries.

Entertain in style with two distinct living spaces, allowing for flexibility in hosting gatherings or simply enjoying quiet moments with loved ones. The seamless flow between indoor and outdoor areas ensures a harmonious connection with the surrounding environment. The established garden with raised vege gardens has its own source of water through a bore with irrigation in place.

For car enthusiasts or those with a penchant for convenience, a triple garage provides ample space for vehicles and storage. The property is further enhanced by an electric gate, offering both security and privacy for peace of mind.

One of the many highlights of 5 Homestead Ave is the breathtaking mountain vistas that unfold before you. Wake up to panoramic views and savour the beauty of nature right from the comfort of your own home.

Our vendors have already moved on so don't miss the opportunity to make 5 Homestead Ave your sanctuary. Talk to Karan & Jess for a personal tour of this expansive family home and to receive the property file.

House Size: 355m2

Land Size: 5320m2

More About this Property

Property ID	DQJH5T
Property Type	House
House Size	355 m ²
Land Area	5320 m ²
Licensed Real Estate Agents (REAA2008)	

Karan MacDiarmid 027 517 7959

Salesperson | karan@mcre.co.nz

Jess Mackay 027 902 5529

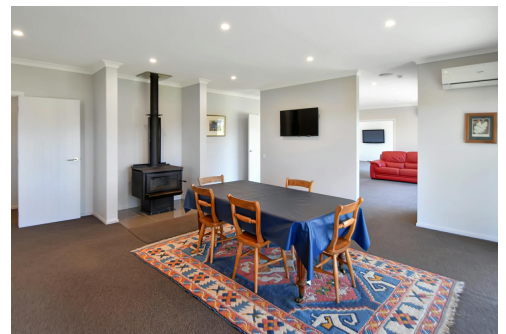
Salesperson | jess@mcre.co.nz

LJ Hooker Twizel (03) 435 0170

Mackenzie Country Real Estate

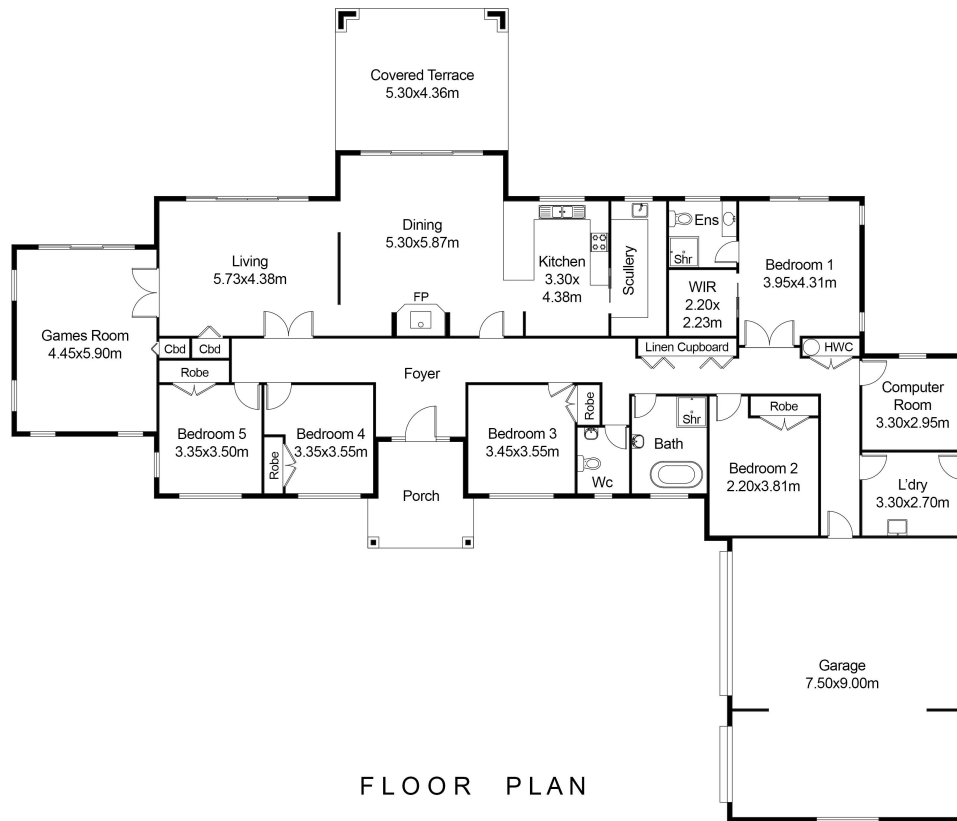
20 Ruataniwha Road, TWIZEL 7901

twizel.ljhooker.co.nz | twizel@mcre.co.nz



Disclaimer: All information contained therein is gathered from relevant third parties sources. We cannot guarantee or give any warranty about the information provided. Interested parties must rely solely on their own enquiries.

LJ Hooker Twizel
(03) 435 0170
Mackenzie Country Real Estate



FLOOR PLAN

This floor plan including furniture, fixture measurements and dimensions are approximate and for illustrative purposes only. BoxBrownie.com gives no guarantee, warranty or representation as to the accuracy and layout. All enquiries must be directed to the agent, vendor or party representing this floor plan.

5 Homestead Ave, Twizel



LJ Hooker Twizel
 (03) 435 0170
 Mackenzie Country Real Estate

Disclaimer: All information contained therein is gathered from relevant third parties sources. We cannot guarantee or give any warranty about the information provided. Interested parties must rely solely on their own enquiries.