



## Twizel, 35 Tekapo Drive

### Flexible Living with Income Potential

35 Tekapo Drive is a property that offers genuine versatility - whether you're an investor, a holidaymaker, or a family seeking extra space and flexibility. With two separate dwellings on one generous 802m<sup>2</sup> section, seven years of consistent short-term rental history, and a tidy, easy-care setup, this is a rare opportunity in the heart of Twizel.

The main home is a 110m<sup>2</sup>, two-bedroom Versatile-designed residence offering open-plan kitchen, dining, and living spaces, creating a welcoming and relaxed atmosphere. A woodfire, heat pump, and contemporary fittings ensure year-round comfort, while sliding doors open out to a secure, private backyard - ideal for summer BBQs, gatherings, or quiet family afternoons. Two well-proportioned bedrooms and a modern, updated bathroom complete the home. An attached single garage offers everyday convenience.

Alongside sits a super cute, retro-style one-bedroom cottage. Full of character and charm, it's fully self-contained with its own kitchen, bathroom, and living area. Whether you



**For Sale**  
Enquiries Over \$740,000

**View**  
By Appointment

**Contact**  
**Karan MacDiarmid**  
027 517 7959  
karan@mcre.co.nz



**Disclaimer:** All information contained therein is gathered from relevant third parties sources. We cannot guarantee or give any warranty about the information provided. Interested parties must rely solely on their own enquiries.

**LJ Hooker Twizel**  
**(03) 435 0170**  
Mackenzie Country Real Estate

continue using it as a short-term rental, keep it as a guest house for visiting friends and family, or use it as a teenager's retreat, the options here are endless.

The fully fenced, low-maintenance backyard ties both dwellings together, making it perfect for children, pets, or private outdoor entertaining. A handy storage shed completes the practical extras.

Positioned in a quiet, established part of Twizel, you're just a short drive to the town centre, cafes, local attractions, and the great outdoors.

Whether you're looking for a proven income earner, a flexible family setup, or a holiday base with room for guests, 35 Tekapo Drive is a smart, versatile choice in a sought-after Mackenzie Basin location.

Viewings are by appointment only due to bookings.

Contact Karan & the team at LJ Hooker Twizel today to make a time to view.

House: 110m2

Cottage: 50m2

Land: 802m2

Zoning: Low Density Residential

## More About this Property

Property ID	E4EH5T
Property Type	House
House Size	110 m2
Land Area	802 m2
Licensed Real Estate Agents (REAA2008)	

**Karan MacDiarmid 027 517 7959**

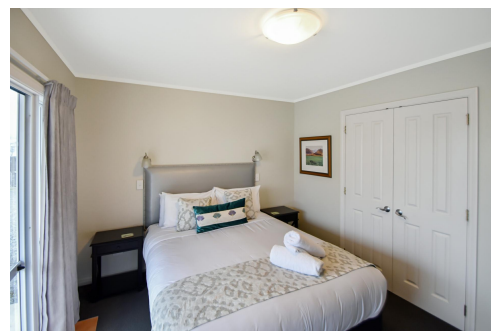
Salesperson | [karan@mcre.co.nz](mailto:karan@mcre.co.nz)

**LJ Hooker Twizel (03) 435 0170**

Mackenzie Country Real Estate

20 Ruataniwha Road, TWIZEL 7901

[twizel.ljhooker.co.nz](mailto:twizel.ljhooker.co.nz) | [twizel@mcre.co.nz](mailto:twizel@mcre.co.nz)



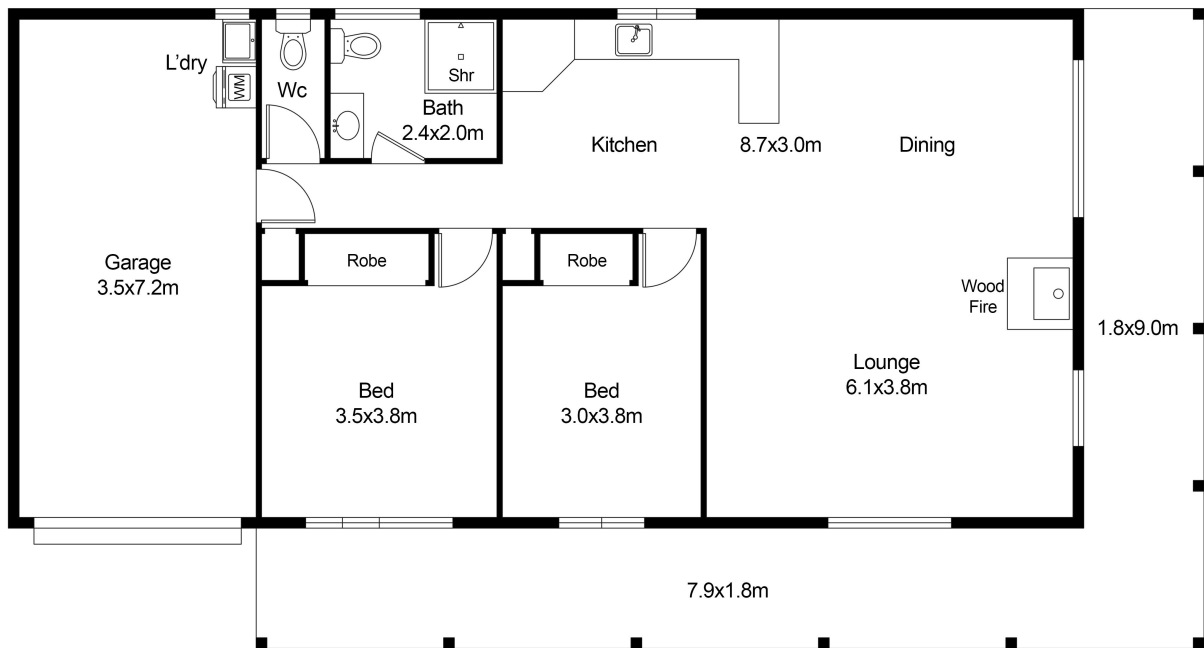
**Disclaimer:** All information contained therein is gathered from relevant third parties sources.

We cannot guarantee or give any warranty about the information provided. Interested parties must rely solely on their own enquiries.

**LJ Hooker Twizel**

**(03) 435 0170**

Mackenzie Country Real Estate



This floor plan including furniture, fixture measurements and dimensions are approximate and for illustrative purposes only.  
 BoxBrownie.com gives no guarantee, warranty or representation as to the accuracy and layout.  
 All enquiries must be directed to the agent, vendor or party representing this floor plan.