



249 Manuka Terrace, Twizel


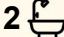
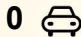
Modern Living with Mountain Views

Set on a generous 2-hectare lifestyle block, 249 Manuka Terrace offers the perfect opportunity to embrace space, privacy, and modern country living. Built in 2019, this 178m² home combines contemporary comforts with rustic character, making it an ideal retreat for families, holidaymakers, or those seeking a quieter way of life.

The home features a spacious open-plan living area with high ceilings and exposed beams, creating an airy, light-filled hub for daily life and entertaining. The modern kitchen is beautifully finished with concrete benchtops, adding a touch of industrial charm to the warm, natural aesthetic. Living spaces flow effortlessly to a covered concrete patio, perfect for outdoor dining or simply relaxing while soaking in the uninterrupted views of the surrounding mountains.

Designed for year-round comfort, the property includes a woodburner and two heat pumps, ensuring the home stays cosy in winter and cool in summer. With four bedrooms and two bathrooms, including a well-appointed master with an ensuite, there's ample space for family and guests.

The 2ha block offers endless lifestyle potential - whether you're

4  2  0 

FOR SALE
\$990,000

AGENTS

Karan MacDiarmid
027 517 7959
karan@mcre.co.nz

AGENCY

LJ Hooker Twizel
(03) 435 0170
Mackenzie Country Real Estate

All information contained therein is gathered from relevant third parties sources.
We cannot guarantee or give any warranty about the information provided.
Interested parties must rely solely on their own enquiries.

 **LJ Hooker**

dreaming of a few animals, gardens, or simply space to enjoy the wide-open landscape. While not fully fenced, the property captures breathtaking panoramic views and star-filled night skies that the Mackenzie is famed for. Also perfect to be a short term rental as the visitors love to stay in this area.

Located just a short drive from Twizel township, this is a fantastic opportunity to secure a modern, easy-care lifestyle property in a spectacular setting, so get in touch with Karan and the team today!

House Size: 178 m2

Land Size: 2 Ha

Zoning: Rural Residential Zone

MORE DETAILS

| | |
|---------------|-----------|
| Property ID | E3WH5T |
| Property Type | House |
| House Size | 178 m2 |
| Land Area | 2 hectare |

Licensed Real Estate Agents (REAA2008)

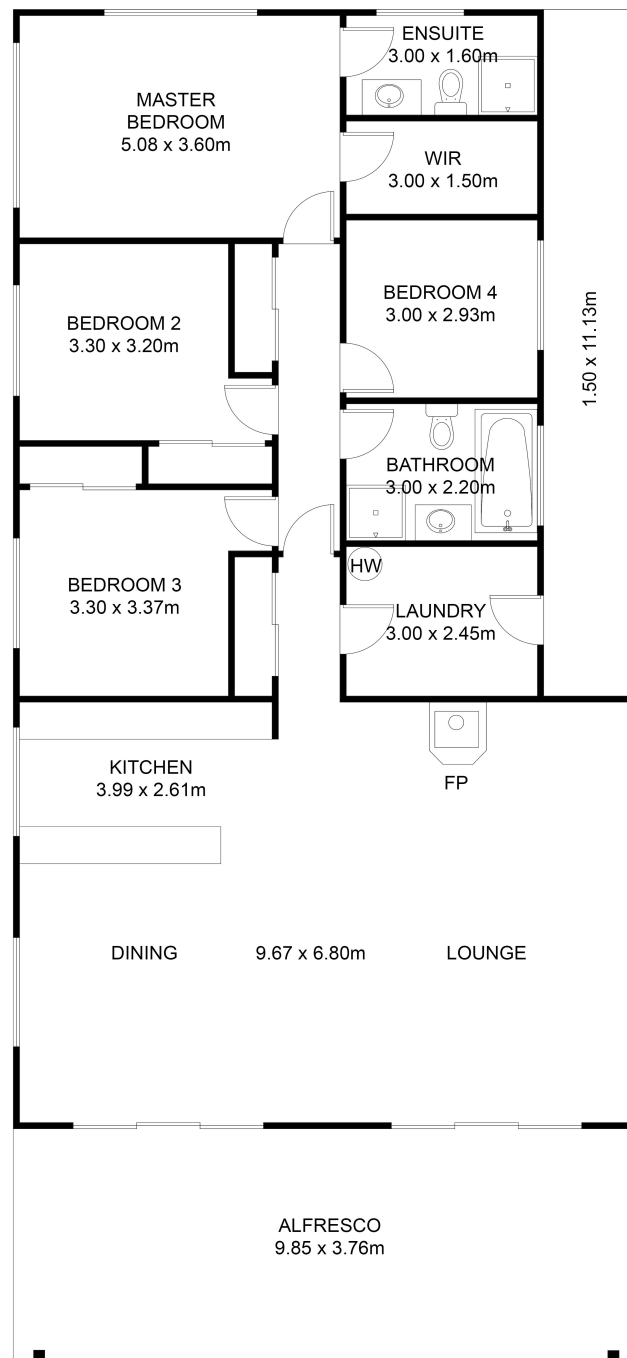
Karan MacDiarmid 027 517 7959

Salesperson | karan@mcre.co.nz

LJ Hooker Twizel (03) 435 0170

Mackenzie Country Real Estate
20 Ruataniwha Road, TWIZEL 7901
twizel.ljhooker.co.nz | twizel@mcre.co.nz





FLOOR PLAN

This floor plan including furniture, fixture measurements and dimensions are approximate and for illustrative purposes only. BoxBrownie.com gives no guarantee, warranty or representation as to the accuracy and layout. All enquiries must be directed to the agent, vendor or party representing this floor plan.

249 Manuka Terrace, Twizel