

Twizel, 170 Max Smith Drive

French Country House

Discover the charm and elegance of this beautifully crafted home at 170 Max Smith Drive, Twizel. Built in 2018 and designed with love, this distinctive property combines character, functionality, and style across two levels. The entry greets you with a stunning turret, an architectural centerpiece that adds magic to the property. Head upstairs into this charming turret space, a delightful spot for hobbies, with roof storage and even a ladder that leads to a hidden top level. Off from the turret is an additional space that can be used for storage or as a spare room for visitors.

Downstairs, you'll find three spacious bedrooms, each with built-in wardrobes, arranged for comfort and privacy. A cozy woodburner warms the hallway leading to the bedrooms, ensuring a snug retreat in the winter months. A family bathroom and ensuite provide ample space for all family members. The farmhouse kitchen is expansive and well-equipped, flowing seamlessly into the large dining and lounge area, where a second woodburner radiates warmth through the open space. An upstairs office, overlooks the main lounge,

3

2

2

For Sale
Negotiation

View
l.jhooker.co.nz/DXSH5T

Contact
Karan MacDiarmid
027 517 7959
karan@mcre.co.nz



Disclaimer: All information contained therein is gathered from relevant third parties sources. We cannot guarantee or give any warranty about the information provided. Interested parties must rely solely on their own enquiries.

LJ Hooker Twizel
(03) 435 0170
Mackenzie Country Real Estate

and there is also an additional versatile room upstairs that could easily serve as a fourth bedroom or creative space.

Tucked away at the far end of the home is a second private lounge with a third woodburner. The main living space extends outdoors to a fantastic deck, perfectly positioned to capture the sun throughout the day. The property boasts a well-established garden, featuring tranquil ponds, mature trees, an orchard, and an expansive lawn-creating a serene, private oasis. The sleepout, complete with a bedroom and kitchenette, offers a private space for guests or could serve as an additional hobby area.

Additional highlights include gas hot water, trickle-fed water, full insulation, and a double garage with a large workshop space. This property is ideal for those who appreciate spaciousness and charm, providing ample room for hobbies and activities. With sweeping views, privacy from the road, and an enchanting atmosphere, this rare find in Twizel and fist time on the market as it is ready to welcome its next owners. This home is filled with thoughtful details and craftsmanship that make it truly one-of-a-kind. Schedule a viewing and step into a world of comfort, beauty, and inspiration-this is more than just a home; it's a lifestyle.

Contact the team from LJ Hooker to book a private tour of this property

House size: 380m2
Land size: 2.02ha
Zoning: Large Lot Residential

More About this Property

Property ID	DXSH5T
Property Type	House
House Size	380 m2
Land Area	2.02 hectare
Licensed Real Estate Agents (REAA2008)	

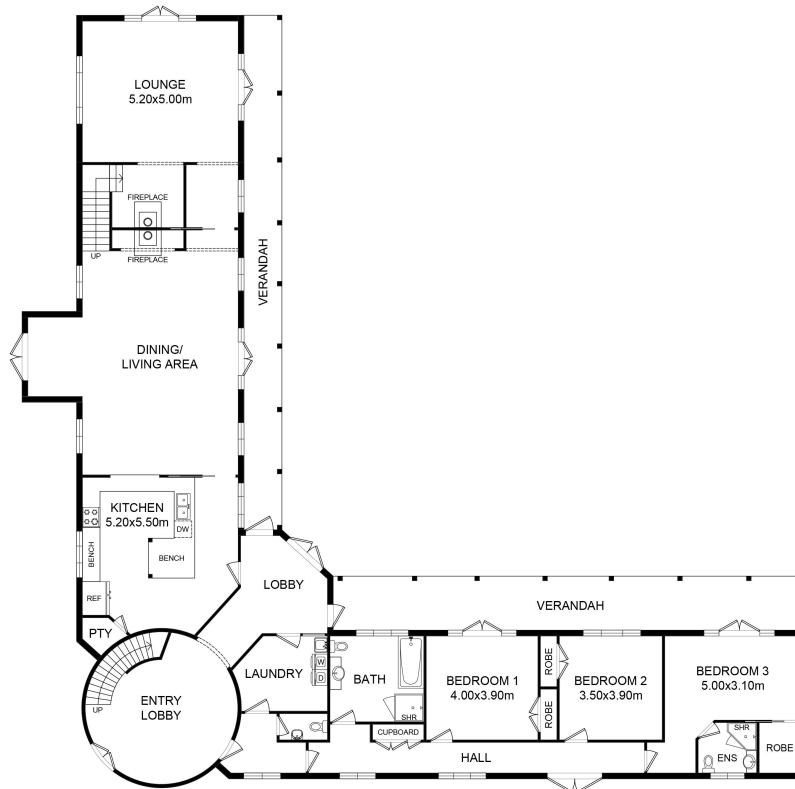
Karan MacDiarmid 027 517 7959
Salesperson | karan@mcre.co.nz

LJ Hooker Twizel (03) 435 0170
Mackenzie Country Real Estate
20 Ruataniwha Road, TWIZEL 7901
twizel.ljhooker.co.nz | twizel@mcre.co.nz

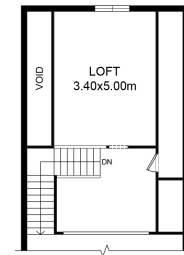


Disclaimer: All information contained therein is gathered from relevant third parties sources. We cannot guarantee or give any warranty about the information provided. Interested parties must rely solely on their own enquiries.

LJ Hooker Twizel
(03) 435 0170
Mackenzie Country Real Estate



GROUND FLOOR PLAN



UPPER
FLOOR PLAN

170 Max Smith Drive, Twizel