



Twizel, 16 Matukituki Crescent

Bespoke Living!

Situated in the tranquil surroundings of Matukituki Crescent, this bespoke residence offers the epitome of modern day living combined with natural beauty. Boasting three bedrooms and a meticulously tiled bathroom, this home exudes elegance and functionality.

Step inside to discover an inviting open-plan layout, seamlessly blending the living, dining and kitchen areas. A thoughtful addition is the inbuilt office space, cleverly integrated into the living area, offering convenience without compromising on style.

Outside, indulge in the captivating outdoor oasis featuring a soothing water feature, perfect for relaxation or entertaining guests. The expansive 7050m2 parcel of land showcases established, yet easy care gardens. This includes a very impressive native area with a walkway, providing a picturesque backdrop for everyday living.

Appreciate stunning mountain views from the comfort of your own home, while enjoying the



Disclaimer: All information contained therein is gathered from relevant third parties sources. We cannot guarantee or give any warranty about the information provided. Interested parties must rely solely on their own enquiries.

3

1

2

For Sale
\$1,100,000

View
By Appointment

Contact
Karan MacDiarmid
027 517 7959
karan@mcre.co.nz

LJ Hooker Twizel
(03) 435 0170
Mackenzie Country Real Estate

convenience of a glass house and garden shed for all your gardening needs. Complete with full fencing and access to town services, this property offers the ideal balance of privacy and accessibility. The property is also subdividable, offering incredible potential for future development.

Surrounded by quality, established homes and manicured gardens, this stunning residence offers an exceptional living environment. Don't miss the opportunity to make this your own slice of paradise. Schedule your viewing today and prepare to be captivated by the charm of 16 Matukituki Crescent, located just minutes from Lake Ruataniwha.

Make an appointment to view with us as well as to receive the property file.

*Please note that there is an independent Valuation on file to support this price guide.

House Size; 173m2

Land Size: 7050m2

More About this Property

Property ID	DUMH5T
Property Type	House
House Size	173 m²
Land Area	7050 m²
Licensed Real Estate Agents (REAA2008)	

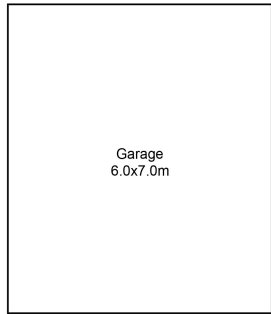
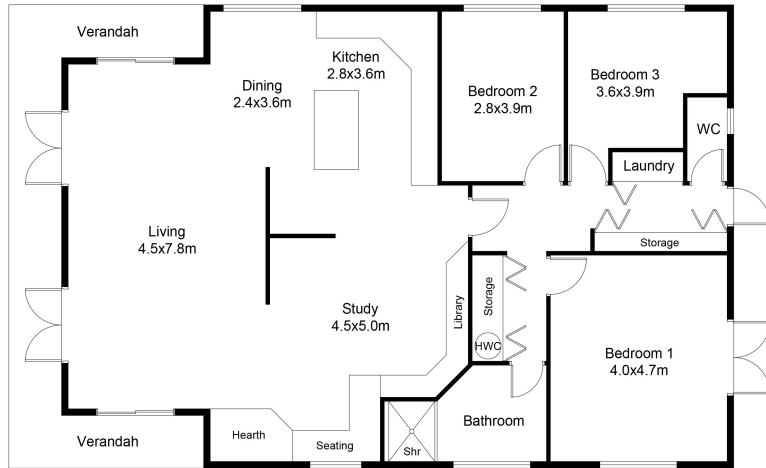
Karan MacDiarmid 027 517 7959
Salesperson | karan@mcre.co.nz

LJ Hooker Twizel (03) 435 0170
Mackenzie Country Real Estate
20 Ruataniwha Road, TWIZEL 7901
twizel.ljhooker.co.nz | twizel@mcre.co.nz



Disclaimer: All information contained therein is gathered from relevant third parties sources. We cannot guarantee or give any warranty about the information provided. Interested parties must rely solely on their own enquiries.

LJ Hooker Twizel
(03) 435 0170
Mackenzie Country Real Estate



FLOOR PLAN

This floor plan including furniture, fixture measurements and dimensions are approximate and for illustrative purposes only. BoxBrownie.com gives no guarantee, warranty or representation as to the accuracy and layout. All enquiries must be directed to the agent, vendor or party representing this floor plan.

16 Matukituki Crescent, Twizel