



Twizel, 135a Ben Ohau Road

Newly Built Alpine Retreat!

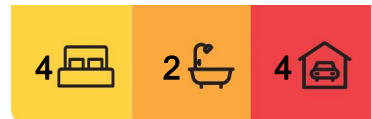
Discover the epitome of modern alpine living in this architecturally designed, newly built (2023) 4-bedroom home.

Set on an expansive 4-hectare property, this residence offers unparalleled comfort and style. This home has two stylish bathrooms, a double garage, and an additional two-bay shed, meeting all your needs for space and convenience. The gorgeous open-plan kitchen with 2 living spaces makes for a great entertaining space or retreat to escape to. The wood burner makes it cosy in the winter, and the heat pump in the master bedroom is designed for cooling in the summer. Bespoke styling has been created throughout the home, reflecting the Mackenzie Country colours.

With 360-degree views, sit back & enjoy the pristine beauty of the alpine vistas from your private haven, complete with a bore. This property is an ideal blend of elegance and functionality, perfect for those seeking a serene retreat with contemporary amenities.



Disclaimer: All information contained therein is gathered from relevant third parties sources. We cannot guarantee or give any warranty about the information provided. Interested parties must rely solely on their own enquiries.



For Sale
Please Call

View
ljhookeer.co.nz/DUEH5T

Contact
Karan MacDiarmid
027 517 7959
karan@mcre.co.nz

Jess Mackay
027 902 5529
jess@mcre.co.nz

LJ Hooker Twizel
(03) 435 0170
Mackenzie Country Real Estate

Get in touch with Karan & Jess to receive the property file and to have a private tour of this gorgeous property. You will not be disappointed.

House Size: 185m2

Land Size: 4.0350ha

More About this Property

Property ID	DUEH5T
Property Type	House
House Size	185 m ²
Land Area	4.04 hectare
Licensed Real Estate Agents (REAA2008)	

Karan MacDiarmid 027 517 7959

Salesperson | karan@mcre.co.nz

Jess Mackay 027 902 5529

Salesperson | jess@mcre.co.nz

LJ Hooker Twizel (03) 435 0170

Mackenzie Country Real Estate

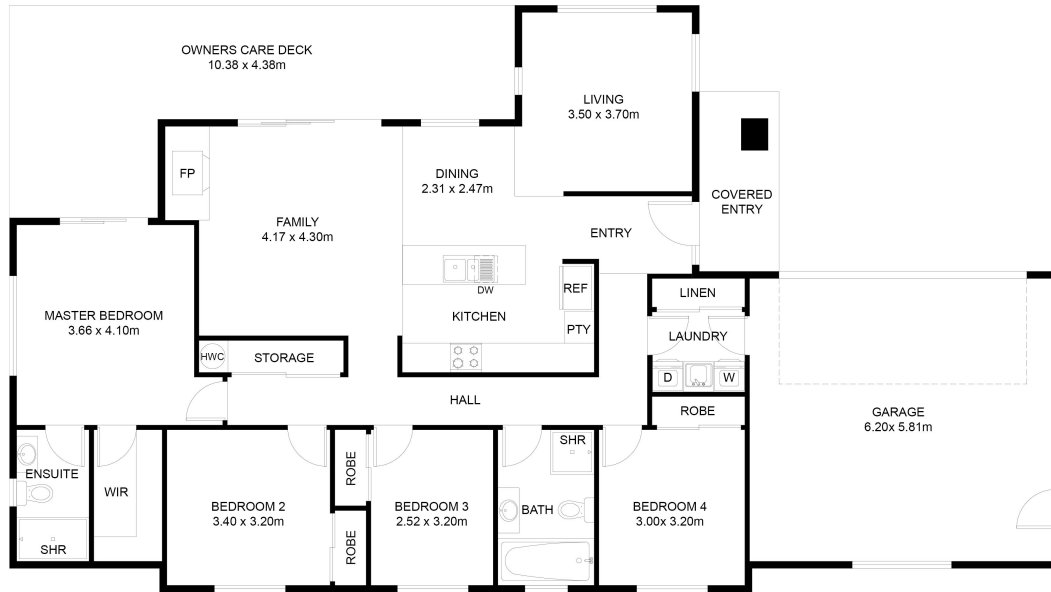
20 Ruataniwha Road, TWIZEL 7901

twizel.ljhooker.co.nz | twizel@mcre.co.nz



Disclaimer: All information contained therein is gathered from relevant third parties sources. We cannot guarantee or give any warranty about the information provided. Interested parties must rely solely on their own enquiries.

LJ Hooker Twizel
(03) 435 0170
Mackenzie Country Real Estate



FLOOR PLAN

This floor plan including furniture, fixture measurements and dimensions are approximate and for illustrative purposes only. BoxBrownie.com gives no guarantee, warranty or representation as to the accuracy and layout. All enquiries must be directed to the agent, vendor or party representing this floor plan.

135a Ben Ohau Road, Twizel