



9 Anchorage Circuit, Twin Waters

A Lifestyle Location That Has It All

Positioned in one of Twin Waters' most sought-after streets, this beautifully presented single-level residence delivers the perfect combination of space, style and an enviable coastal lifestyle. Set within prestigious Anchorage Circuit, the home offers generous family living in a peaceful location just moments from the river, waterways, beaches and everyday conveniences.

Designed for effortless living and entertaining, the spacious floorplan features four generous bedrooms, two separate living areas and a large, dedicated media room. High ceilings and an abundance of natural light create an immediate sense of openness, while the seamless connection between indoor and outdoor spaces makes the most of the Sunshine Coast climate.

At the heart of the home, expansive living zones flow to a stunning outdoor entertaining area overlooking a gorgeous modern pool. Beautifully tiled and designed for year-round enjoyment, this private outdoor retreat is the perfect place to relax with family and friends.

Beyond the home itself, it is the lifestyle on offer that truly sets this property apart. Enjoy morning walks along the nearby river and

4  2  2 

FOR SALE
Expressions of Interest

VIEW
By Appointment

AGENTS
Joshua Dekker
0427 661 261
jdekker.twinwaters@ljhooker.com.au

John Blackmore
0402 238 421
jblackmore.twinwaters@ljhooker.com.au

AGENCY
LJ Hooker Twin Waters
(07) 5450 6188

All information contained therein is gathered from relevant third parties sources.
We cannot guarantee or give any warranty about the information provided.
Interested parties must rely solely on their own enquiries.

 **LJ Hooker**

waterways, explore the extensive network of walking and cycling paths, or stroll to local cafés and shops for your morning coffee. The pristine sands of North Shore and Mudjimba beaches are just minutes away, while easy access to schools, golf courses and the Sunshine Coast Airport further enhances the appeal.

Twin Waters is renowned for its relaxed waterfront lifestyle, natural beauty and strong sense of community, making it one of the Sunshine Coast's most desirable places to call home.

Features you'll love:

- Prestigious Anchorage Circuit location
- Contemporary single-level design
- Four generous bedrooms
- Two separate living areas plus large media room
- High ceilings throughout
- Stunning modern swimming pool with stylish tiling
- Spacious covered outdoor entertaining area
- Seamless indoor-outdoor living
- Walking distance to the river and waterways
- Short stroll to local cafes and shops
- Minutes to the North Shore and Mudjimba Beach
- Exceptional lifestyle opportunity in a highly sought-after Twin Waters location

Offering modern comfort, generous proportions and an unbeatable location, this is a home that perfectly captures the relaxed coastal lifestyle Twin Waters is famous for.

This property is being sold without a set price and the website may have filtered the property into a price bracket for website functionality purposes.

DISCLAIMER: Whilst every effort has been made to ensure the accuracy of information contained about this property, it does not constitute any warranty or representation by the vendor or agent. All information contained herein is gathered from sources we consider to be reliable. All interested parties must solely rely on their own inspections, enquiries and searches with all relevant authorities.

Note: Photos used are old images from on file. New photos to come.

MORE DETAILS

Property ID KX5GZT
Property Type House
Land Area 782 m2
Including Ensuite
Air Conditioning
Pool
Dishwasher
Outdoor Entertaining
Built-in-Robes
Fully Fenced
Remote Garage

Joshua Dekker 0427 661 261

Licensed Real Estate Agent | jdekker.twinwaters@ljhooker.com.au

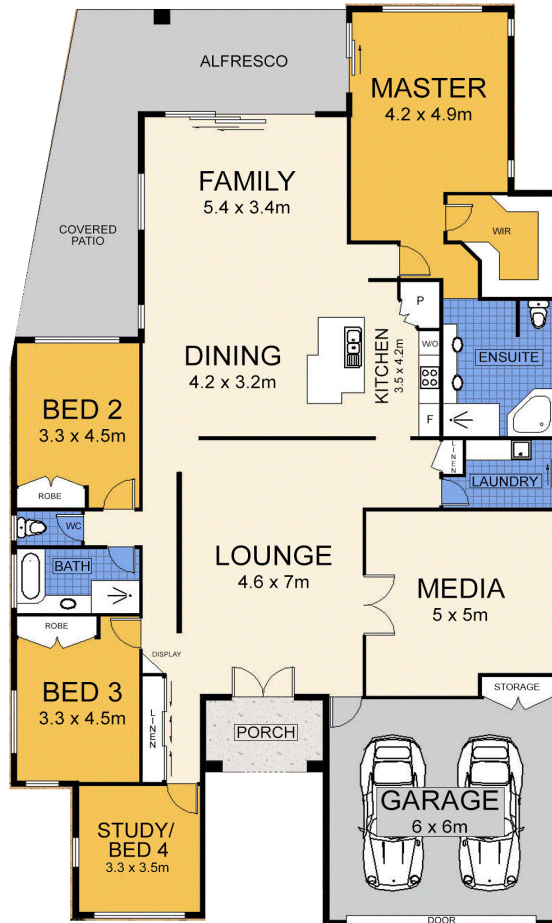
John Blackmore 0402 238 421

Licensed Real Estate Agent |
jblackmore.twinwaters@ljhooker.com.au

LJ Hooker Twin Waters (07) 5450 6188

Shop 2, 175 Ocean Drive, TWIN WATERS QLD 4564
twinwaters.ljhooker.com.au | info.twinwaters@ljhooker.com.au





(Floor Plan For Illustrative Purposes Only)

Scale In metres. We give no guarantee, warranty or representation as to the accuracy and completeness of the floor plan. We recommend that you instruct your own surveyor to carry out an independent investigation of the property prior to relying on the accuracy and completeness of this plan. Floor Plan presented by The Floor Plan Specialist. www.thefpspecialist.com.au

APPROXIMATE AREAS

INTERNAL : 231m²

GARAGE : 36m²

EXTERNAL : 43m²

TOTAL : 310m²

LOT AREA : 782m²



9 Anchorage Circuit, Twin Waters

LJ Hooker Twin Waters

All information contained therein is gathered from relevant third parties sources.
We cannot guarantee or give any warranty about the information provided.
Interested parties must rely solely on their own enquiries.

