

## Tweed Heads South, 29/33 Lloyd Street

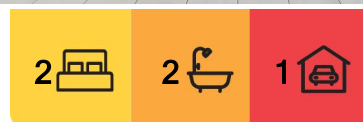
SOLD BY JO LYNCH & JO ELWIN

This is a bright and spacious top floor unit. With an open plan kitchen / living space and 2 bedrooms, the master with ensuite.

The balcony is generous enough to accommodate an outdoor table setting and outdoor lounge. Overlooking the swimming pool, with Tweed River glimpses through the trees. This fully undercover outdoor space was designed to suit the coastal climate of the Tweed Region.

You will be central to shops, cafes & restaurants, beaches, and riverside walking & riding paths.

Currently tenanted until 17th June, 2024 allowing the buyer the option to move in or renew the lease with current tenants.



**For Sale**  
\$630,000 - \$650,000

**View**  
[ljhooker.com.au/JVAHEZ](http://ljhooker.com.au/JVAHEZ)

**Contact**  
**Jo Lynch**  
0424 420 884  
[jolynch@ljhookersgc.com.au](mailto:jolynch@ljhookersgc.com.au)

**Jo Elwin**  
0409 429 785  
[jo@ljhookerpb.com.au](mailto:jo@ljhookerpb.com.au)



**Disclaimer:** All information contained therein is gathered from relevant third parties sources. We cannot guarantee or give any warranty about the information provided. Interested parties must rely solely on their own enquiries.

**LJ Hooker Coolangatta | Tweed**  
**(07) 5536 5577**

More details...

- Kitchen with electric oven, range hood and dishwasher.
- Master bedroom features wardrobes and ensuite
- Bedroom 2 with built-in wardrobe space
- Ceiling fans throughout
- Split system air conditioning in living area
- Tiled floors throughout (except for carpeted bedrooms)
- Combined bathroom & laundry
- Secure complex with intercom
- 3 story walk up
- Secure undercover car park with allocated spot for 1 vehicle
- Swimming pool in complex

29/33 Lloyd Street is central to:

- Schools including Tweed River High, Tweed Heads South Primary, Lindisfarne and Pacific Coast Private Schools
- Tweed City Shopping Centre and Tweed Mall
- Beaches of the Gold & Tweed Coasts
- Tweed Hospital, Southern Cross University and Gold Coast International Airport are all within 10 minutes' drive.
- Boat ramp, footpaths, and bus stops
- Sporting fields and netball courts

Additional details:

- Body Corporate - approx. \$116.50 per week includes water rates & usage
- Rates - \$2,611 p/a
- Rental Return - currently \$550 per week.
- Current lease ends June 17th 2024

To arrange your viewing of this property, please contact The Jo & Jo Sales Team:

Jo Lynch - 0424 420 884

Jo Elwin - 0409 429 785

Disclaimer:

All information (including but not limited to the property area, floor size, price, address and general property description) is provided as a convenience to you, and has been provided to LJ Hooker by third parties. LJ Hooker is unable to definitively confirm whether the information listed is correct or 100% accurate. LJ Hooker does not accept any liability (direct or indirect) for any injury, loss, claim, damage or any incidental or consequential damages, including but not limited to lost profits or savings, arising out of or in any way connected with the use of any information, or any error, omission or defect in the information, contained on the Website. Information contained on the Website should not be relied upon and you should make your own enquiries and seek legal advice in respect of any property on the Website. Prices displayed on the Website are current at the time of issue, but may change.



**LJ Hooker Coolangatta | Tweed**  
**(07) 5536 5577**

**Disclaimer:** All information contained therein is gathered from relevant third parties sources. We cannot guarantee or give any warranty about the information provided. Interested parties must rely solely on their own enquiries.

## More About this Property

Property ID	JVAHEZ
Property Type	Unit

### Jo Lynch 0424 420 884

Sales & Marketing Specialist | [jolynch@ljhookersgc.com.au](mailto:jolynch@ljhookersgc.com.au)

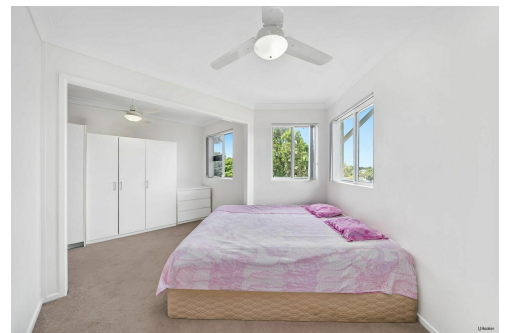
### Jo Elwin 0409 429 785

Sales & Marketing Specialist | [jo@ljhookerpb.com.au](mailto:jo@ljhookerpb.com.au)

### LJ Hooker Coolangatta | Tweed (07) 5536 5577

5/100 Griffith Street, COOLANGATTA QLD 4225

[coolangattatweed.ljhooker.com.au](http://coolangattatweed.ljhooker.com.au) | [enquiries@ljhookerct.com.au](mailto:enquiries@ljhookerct.com.au)



**Disclaimer:** All information contained therein is gathered from relevant third parties sources.  
We cannot guarantee or give any warranty about the information provided. Interested parties must rely solely on their own enquiries.

**LJ Hooker Coolangatta | Tweed**  
**(07) 5536 5577**





29/33 Lloyd Street, Tweed Heads South

Internal - 85m<sup>2</sup> | Covered External - 23m<sup>2</sup> | Total - 108m<sup>2</sup>

Dimensions are approximate, interested parties should do their own due diligence. The company takes no responsibilities for inaccurate measurements or errors

LJ Hooker



**LJ Hooker Coolangatta | Tweed**  
**(07) 5536 5577**

**Disclaimer:** All information contained therein is gathered from relevant third parties sources.  
We cannot guarantee or give any warranty about the information provided. Interested parties must rely solely on their own enquiries.