

Tweed Heads, 6/18-20 Enid Street

SOLD BY JO LYNCH & JO ELWIN

This location is unbeatable for absolute convenience. Walk to the beach, shops, club, cafes, and restaurants! With Bay Street just around the corner, grab your morning coffee from Bread Social before hitting the beach at Greenmount. This apartment is literally less than a kilometer from everything you need!

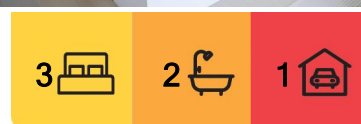
A spacious 3-bedroom first level apartment with 2 bathrooms, huge balcony and 1 secure car space.

The apartment features a modern kitchen with stone bench tops and glass splash backs. Open plan living extends to your large undercover balcony overlooking the park. New high quality hybrid flooring throughout the apartment adds to the coastal aesthetic.

The master bedroom also has direct balcony access along with an ensuite and walk-in robe.



Disclaimer: All information contained therein is gathered from relevant third parties sources. We cannot guarantee or give any warranty about the information provided. Interested parties must rely solely on their own enquiries.



For Sale

Expressions Of Interest Closing Tues 28th Jan.

View

ljhooker.com.au/KC3HEZ

Contact

Jo Lynch

0424 420 884
jolynch@ljhookersgc.com.au

Jo Elwin

0409 429 785
jo@ljhookerpb.com.au

LJ Hooker Coolangatta | Tweed
 (07) 5536 5577

Additional:

- Kitchen with stone bench tops, 2 pack cabinetry, electric oven, stove top, range hood and dishwasher
- Recent addition of high-quality hybrid flooring throughout, scratch resistant
- Master bedroom with direct access to balcony, ensuite, walk-in robe & ceiling fan
- 2 guest bedrooms with built-in robes and ceiling fans
- Main bathroom with bathtub and separate toilet
- Separate laundry
- Hardwired smoke alarms
- Large balcony overlooking the park
- 14 units in the complex
- Split-system air conditioning in lounge
- Video intercom system at front entry
- Secure undercover parking space for 1 vehicle plus visitor parking. Additional on street parking
- 1 story walk-up

Rental Appraisal: approx. \$900 - \$950 per week

Body Corp: approx. \$61 per week includes building insurance and water usage

Council Rates: approx. \$2,775 per annum

Central to:

- Tweed Mall - 400m
- Twin Towns - 700m
- Local Schools - St Joseph's Primary, Tweed Heads Primary
- Park across the road
- Coolangatta / Greenmount Beach - 600m
- Coolangatta Bowls Club - 500m
- Gold Coast International Airport - 3.8km

Please note all open homes are in NSW daylight saving time. To live every day like it's a holiday, please contact the Jo & Jo Sales Team.

Jo Lynch - 0424 420 884.

Jo Elwin - 0409 429 785

Disclaimer:

All information (including but not limited to the property area, floor size, price, address and general property description) is provided as a convenience to you, and has been provided to LJ Hooker by third parties. LJ Hooker is unable to definitively confirm whether the information listed is correct or 100% accurate. LJ Hooker does not accept any liability (direct or indirect) for any injury, loss, claim, damage or any incidental or consequential damages, including but not limited to lost profits or savings, arising out of or in any way connected with the use of any information, or any error, omission or defect in the information, contained on the Website. Information contained on the Website should not be relied upon and you should make your own enquiries and seek legal advice in respect of any property on the Website. Prices displayed on the Website are current at the time of issue, but may change.



LJ Hooker Coolangatta | Tweed
(07) 5536 5577

Disclaimer: All information contained therein is gathered from relevant third parties sources. We cannot guarantee or give any warranty about the information provided. Interested parties must rely solely on their own enquiries.

More About this Property

| | |
|----------------------|---------------------|
| Property ID | KC3HEZ |
| Property Type | Unit |
| House Size | 139 m ² |
| Land Area | 1250 m ² |
| Including | Ensuite |

Jo Lynch 0424 420 884

Sales & Marketing Specialist | jolynch@ljhookersgc.com.au

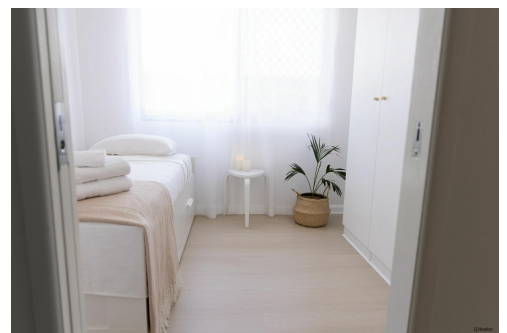
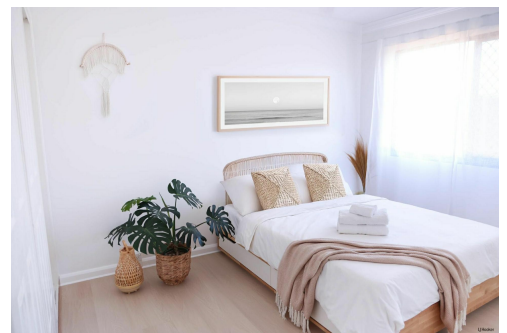
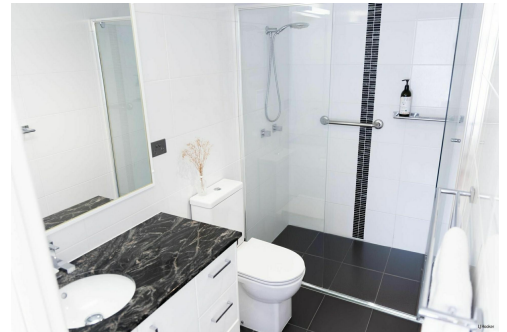
Jo Elwin 0409 429 785

Sales & Marketing Specialist | jo@ljhookerpb.com.au

LJ Hooker Coolangatta | Tweed (07) 5536 5577

5/100 Griffith Street, COOLANGATTA QLD 4225

coolangattatweed.ljhooker.com.au | enquiries@ljhookerct.com.au



Disclaimer: All information contained therein is gathered from relevant third parties sources.
We cannot guarantee or give any warranty about the information provided. Interested parties must rely solely on their own enquiries.

LJ Hooker Coolangatta | Tweed
(07) 5536 5577



LJ Hooker
Coolangatta | Tweed

Jo Lynch
0424 420 884

6/18-20 Enid Street, Tweed Heads
Internal: 87 m² | External: 52 m² | Approx Total: 139 m²
LJ Hooker

Plans shown are only indicative of layout. Dimensions are approximate.



LJ Hooker Coolangatta | Tweed
(07) 5536 5577

Disclaimer: All information contained therein is gathered from relevant third parties sources.
We cannot guarantee or give any warranty about the information provided. Interested parties must rely solely on their own enquiries.