



Tweed Heads, 22/20-22 Thomson Street

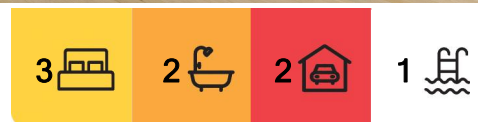
SOLD BY GARY EVENDEN

Prepare to be blown away by this elegantly renovated masterpiece, featuring top-of-the-line high-end finishes and accessories that will leave you in awe. Indulge in the culinary delights of a kitchen, complete with sleek Smeg appliances that redefine sophistication, and experience the future of refrigeration with a smart refrigerator boasting wireless connectivity and advanced diagnosis capabilities.

Every space has been meticulously thought through. From the textiles of colour and design throughout, to the wrap around balcony with 280 degrees of breathtaking ocean and hinterland views. Entertain like never before in the custom-designed BBQ area that will make your friends green with envy. And to top it off, a jaw-dropping 55-inch flat-screen TV awaits, ensuring your gatherings are nothing short of extraordinary. This is the epitome of coastal living at its finest.



Disclaimer: All information contained therein is gathered from relevant third parties sources. We cannot guarantee or give any warranty about the information provided. Interested parties must rely solely on their own enquiries.



For Sale
\$1,320,000

View
ljhooker.com.au/JJ2HEZ

Contact
Gary Evenden
0411 966 001
gary@ljhookerct.com.au

LJ Hooker Coolangatta | Tweed
(07) 5536 5577

Special Features:

- Sleek and modern renovation with quality finishes
- Wide floating floorboards (European Oak)
- Neon definition lighting in kitchen
- High end kitchen appliances including smeg oven, Fisher & Paykel dishwasher and LG smart refrigerator with wireless connectivity
- Wrap around Balcony with undercover entertaining
- Wall mounted/cased t.v's in main bedroom, kitchen and entertaining area
- Reverse cycle air-conditioning
- Large secure storage cage
- Swimming pool
- Security swipe access to building & parking
- Car wash facilities
- Located within 900 meters of Jack Evans Boat Harbour, Tweed Mall and Coolangatta Beach

Additional features:

Council Rates: \$59pw

Body Corp: \$155pw

Rental Appraisal: \$1000pw

Disclaimer:

All information (including but not limited to the property area, floor size, price, address and general property description) is provided as a convenience to you, and has been provided to LJ Hooker by third parties. LJ Hooker is unable to definitively confirm whether the information listed is correct or 100% accurate. LJ Hooker does not accept any liability (direct or indirect) for any injury, loss, claim, damage or any incidental or consequential damages, including but not limited to lost profits or savings, arising out of or in any way connected with the use of any information, or any error, omission or defect in the information, contained on the Website. Information contained on the Website should not be relied upon and you should make your own enquiries and seek legal advice in respect of any property on the Website. Prices displayed on the Website are current at the time of issue, but may change.



LJ Hooker Coolangatta | Tweed
(07) 5536 5577

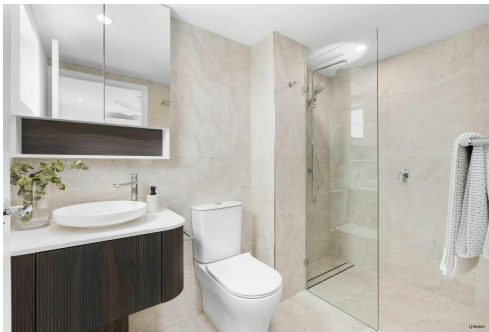
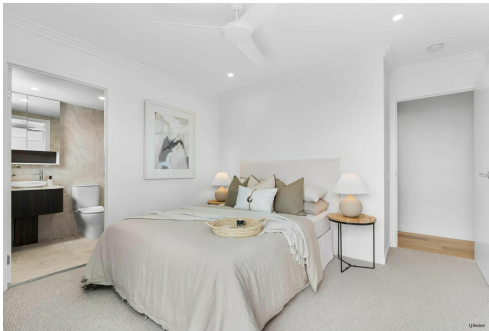
Disclaimer: All information contained therein is gathered from relevant third parties sources. We cannot guarantee or give any warranty about the information provided. Interested parties must rely solely on their own enquiries.

More About this Property

Property ID	JJ2HEZ
Property Type	Unit
House Size	264 m²
Including	Air Conditioning Pool Balcony Outdoor Entertaining Built-in-Robes

Gary Evenden
Sales Specialist – Independent Contractor | gary@ljhookerct.com.au

LJ Hooker Coolangatta | Tweed (07) 5536 5577
5/100 Griffith Street, COOLANGATTA QLD 4225
coolangattatweed.ljhooker.com.au | enquiries@ljhookerct.com.au



Disclaimer: All information contained therein is gathered from relevant third parties sources. We cannot guarantee or give any warranty about the information provided. Interested parties must rely solely on their own enquiries.

LJ Hooker Coolangatta | Tweed
(07) 5536 5577



- 1 RESIDENCE
2 RAINBOW BAY 3 THE STRAND SHOPPING CENTRE
4 KIRRA BEACH 5 SNAPPER ROCKS



Location Map

22/20-22 Thomson St, Tweed Heads

BED 3 BATH 2 CAR 2

Internal: 117 m² | External: 90 m² | Approx Total: 207 m²

Whilst every attempt has been made to ensure the accuracy of the floor plan contained here, measurements of doors, windows, rooms and any other item are approximate and no responsibility is taken for any error, omission, or misstatement. This plan is for illustrative purposes only and should only be used as such by any prospective purchaser.

