



16/1 Botany Crescent, Tweed Heads

Sold By Gary Evenden


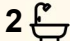
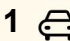
Rare Ground-Floor Haven in Greenbank Estate

Set within the leafy Greenbank Estate, this ground-floor apartment offers a blend of privacy, generous proportions, and everyday convenience. Surrounded by the Tweed waterways and scenic walks, it provides a serene retreat while remaining close to shopping, dining and transport. It's a location that makes daily life easy while still feeling tucked away from the hustle.

Internally, the home has been well maintained and boasts impressive scale, with expansive living areas and seamless indoor—outdoor flow, enhancing the sense of openness. Leave as original or renovate, refresh and add significant value. Rarely do apartments of this size and position become available in such a tightly held and highly sought-after estate, making this an opportunity not to be missed.

Features:

- Living area with air conditioning for cool summer days
- Seamless open-plan living and dining, ideal for family living
- Master suite offering ensuite comfort and a generous walk-in wardrobe
- Main bathroom offering both bath and shower plus separate toilet
- Internal laundry with great storage capacity

3  2  1 

FOR SALE

\$1,000,000 - \$1,100,000

AGENTS

Gary Evenden
0411 966 001
gary@ljhookerct.com.au

AGENCY

LJ Hooker Coolangatta | Tweed
(07) 5536 5577

All information contained therein is gathered from relevant third parties sources.
We cannot guarantee or give any warranty about the information provided.
Interested parties must rely solely on their own enquiries.



- Relaxing undercover terrace overlooking peaceful surrounds and Tweed River
- Single lock-up garage providing secure off-street parking

Location:

- 400m to Tweed Heads Bowls Club
- 700m to Tweed Marina
- 500m to Tweed Mall Shopping Centre
- 500m to Bay Street shops/cafes
- 450m to Ivory Waterside
- 650m to Jack Evans Boat Harbour
- 900m to Duranbah Beach

Additional Information:

Council Rates \$55pw

Body Corp Fees \$104pw

Rental Appraisal \$1,050-\$1,100pw

Disclaimer:

All information (including but not limited to the property area, floor size, price, address and general property description) is provided as a convenience to you, and has been provided to LJ Hooker by third parties. LJ Hooker is unable to definitively confirm whether the information listed is correct or 100% accurate. LJ Hooker does not accept any liability (direct or indirect) for any injury, loss, claim, damage or any incidental or consequential damages, including but not limited to lost profits or savings, arising out of or in any way connected with the use of any information, or any error, omission or defect in the information, contained on the Website. Information contained on the Website should not be relied upon and you should make your own enquiries and seek legal advice in respect of any property on the Website. Prices displayed on the Website are current at the time of issue, but may change.

MORE DETAILS

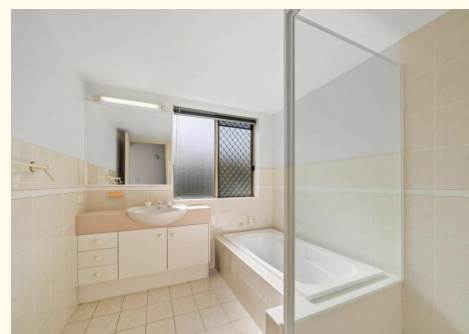
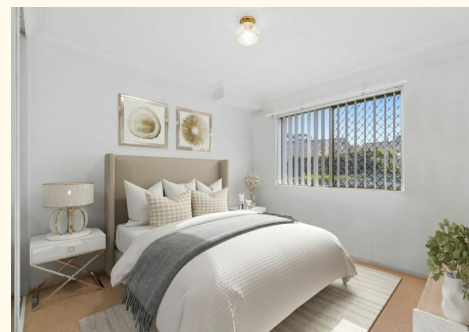
Property ID	M4EHEZ
Property Type	Unit
Including	Air Conditioning Balcony Outdoor Entertaining Built-in-Robes Secure Parking

Gary Evenden 0411 966 001

Sales Specialist â€“ Independent Contractor |
gary@ljhookerct.com.au

LJ Hooker Coolangatta | Tweed (07) 5536 5577

5/100 Griffith Street, COOLANGATTA QLD 4225
coolangattatweed.ljhooker.com.au | enquiries@ljhookerct.com.au





LJ Hooker

Gary Evenden 0411 966 001

16/1
BOTANY CRESCENT
Tweed Heads

Internal Area 121.3m²
External Area 28.1m²
Total Area 149.4m²

-  3
-  2
-  1



LJ Hooker

All information contained therein is gathered from relevant third parties sources.
We cannot guarantee or give any warranty about the information provided.
Interested parties must rely solely on their own enquiries.

LJ Hooker