

SOLD



Tweed Heads, 11 Alva Street

SOLD BY JO LYNCH & JO ELWIN

Inspection by appointment only - please contact agent.

Offering absolute privacy amongst the trees, this sanctuary is conveniently located just minutes from the main street of Coolangatta and the hub of Tweed Heads. Located in a tightly held cul-de-sac, this 3-bedroom, 2-bathroom home is convenient to everything and offers tranquil treehouse vibes.

The residence is cosy with a fireplace in the lounge and original timber flooring throughout. The kitchen offers timber benchtops, gas cooktop, electric oven, and a lovely diner-style breakfast nook.

Large glass windows frame the lounge and sunroom with greenery from the tropical outdoors. Whilst the current owners have enjoyed their rainforest canopy, clearing even just some of these trees would allow water views over The Endless Summer Canals!

3

2

2

For Sale
\$1,150,000

View
ljhooker.com.au/K38HEZ

Contact
Jo Lynch
0424 420 884
jolynch@ljhookersgc.com.au

Jo Elwin
0409 429 785
jo@ljhookerpb.com.au

Walk the landscaped gardens along the custom-built boardwalk. There are viewing platforms and decks along the way, the perfect place to relax with a cup of tea or glass of wine. A workshop is positioned amongst the gardens, the ultimate man-cave or place to tinker!

This is a charming home that oozes character and feels like your own tropical paradise in this highly desirable pocket of Tweed. The potential lies in the location and stunning views beyond the trees.

Additional property features:

- Kitchen with electric oven and gas stove top, dishwasher
- Lounge / dining space with split-system air conditioning and fireplace
- Original timber floors throughout
- 2 Bedrooms upstairs with built-in wardrobes and ceiling fans
- Study could make a 3rd bedroom by enclosing
- Bathroom with heated towel rails, separate toilet
- Sunroom with pool table included
- External deck off kitchen, additional deck off downstairs studio
- Potential dual living downstairs (STCA) with kitchenette and toilet
- Separate laundry with additional shower
- Plenty of storage under house.
- External workshop with 2 additional garden sheds
- Irrigation system throughout gardens and trees
- Established gardens and landscaped palm trees with timber boardwalk around the grounds
- Off street parking for 2 vehicles - stairs down to front entrance of house
- Block size is 708m²
- Council rates: approx. \$2,959 p/a

11 Alva Street, Tweed Heads is central to:

- Tweed Central Shopping Centre & The Strand at Coolangatta
- Beaches including Kirra, Coolangatta, Greenmount, and Rainbow Bay
- Kennedy Drive boat ramp
- Clubs, Restaurants, Bars and Cafes
- Parks and Sporting Fields
- Easy access to the M1, with Byron 45 mins away and Brisbane in 1 hour
- Gold Coast International Airport
- Schools and Southern Cross University
- Public and Private Hospitals

To arrange your viewing, please contact The Jo & Jo Sales Team:

Jo Lynch - 0424 420 884

Jo Elwin - 0409 429 785

Disclaimer:

All information (including but not limited to the property area, floor size, price, address and general property description) is provided as a convenience to you, and has been provided to LJ Hooker by third parties. LJ Hooker is unable to definitively confirm whether the



LJ Hooker Coolangatta | Tweed
(07) 5536 5577

Disclaimer: All information contained therein is gathered from relevant third parties sources. We cannot guarantee or give any warranty about the information provided. Interested parties must rely solely on their own enquiries.

information listed is correct or 100% accurate. LJ Hooker does not accept any liability (direct or indirect) for any injury, loss, claim, damage or any incidental or consequential damages, including but not limited to lost profits or savings, arising out of or in any way connected with the use of any information, or any error, omission or defect in the information, contained on the Website. Information contained on the Website should not be relied upon and you should make your own enquiries and seek legal advice in respect of any property on the Website. Prices displayed on the Website are current at the time of issue, but may change.

More About this Property

Property ID	K38HEZ
Property Type	House
Land Area	708 m ²

Jo Lynch 0424 420 884

Sales & Marketing Specialist | jolynch@ljhookersgc.com.au

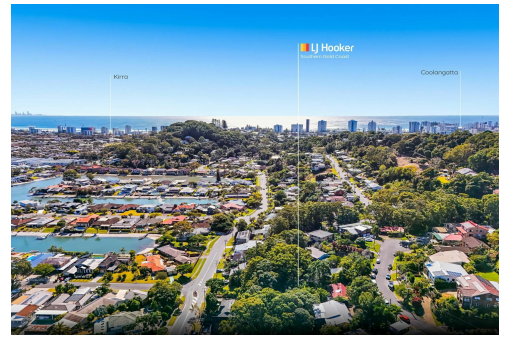
Jo Elwin 0409 429 785

Sales & Marketing Specialist | jo@ljhookerpb.com.au

LJ Hooker Coolangatta | Tweed (07) 5536 5577

5/100 Griffith Street, COOLANGATTA QLD 4225

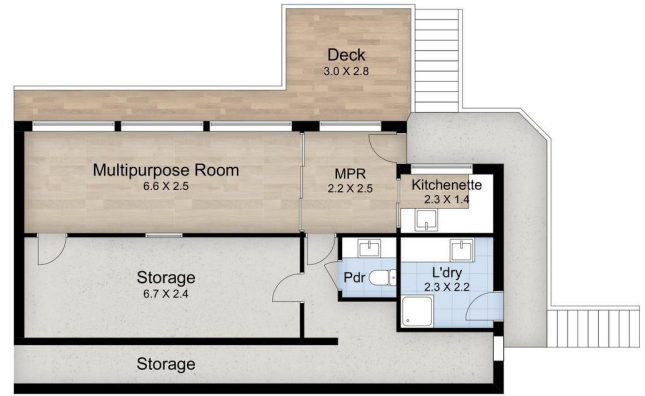
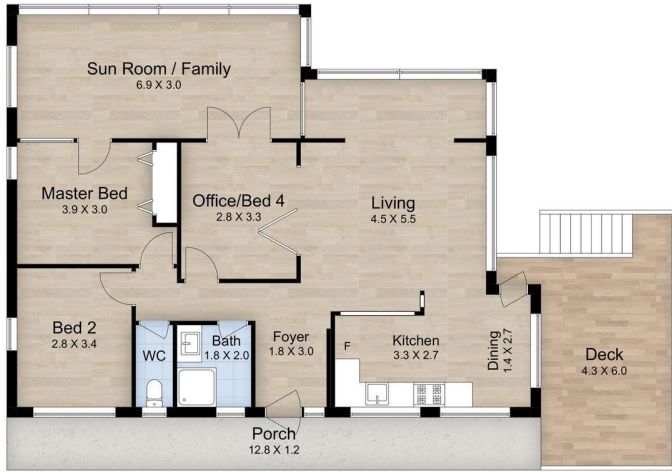
coolangattatweed.ljhooker.com.au | enquiries@ljhookerct.com.au



Disclaimer: All information contained therein is gathered from relevant third parties sources.

We cannot guarantee or give any warranty about the information provided. Interested parties must rely solely on their own enquiries.

**LJ Hooker Coolangatta | Tweed
(07) 5536 5577**



11 Alva Street, Tweed Heads

Internal - 188m²

External - 102m²

Total - 290m²

Dimensions are approximate, interested parties should do their own due diligence. The Floor Planners take no responsibilities for inaccurate measurements or errors.

LJ Hooker



LJ Hooker Coolangatta | Tweed
(07) 5536 5577

Disclaimer: All information contained therein is gathered from relevant third parties sources. We cannot guarantee or give any warranty about the information provided. Interested parties must rely solely on their own enquiries.