



Tusmore, 4 Bakewell Street

A superb family home in tightly held location

An exquisite stone fronted 1920s bungalow with all the charm and character of yester year. High ornate ceilings, decorative fireplaces and rich timber floors feature throughout.

Located in a prestigious eastern suburb minutes to Burnside Village and The Parade shopping and cafe precinct. The recreational activities of Tusmore Park are within easy access as are numerous private colleges including Pembroke and Loreto.

Offering a flexible floorplan with up to 4 bedrooms. All bedrooms have built-in robes and the master features a new ensuite. The formal lounge room has double doors leading through to the study, or fourth bedroom .

This recently renovated home has a well designed kitchen with island bench and quality appliances and 2 luxe bathrooms. The open plan meals and family room with parquetry flooring opens out to the paved pergola area and gazebo.

4 2 2

For Sale
Contact Agent

View
ljhooker.com.au/2C3QFDZ

Contact
Marie Brus
0418 844 502
marie.brus@ljhadelaidemetro.com.au

Samuel Derbali
0450 033 056
samuel.derbali@ljhadelaidemetro.com.au



LJ Hooker St Peters
(08) 8362 8008

Disclaimer: All information contained therein is gathered from relevant third parties sources. We cannot guarantee or give any warranty about the information provided. Interested parties must rely solely on their own enquiries.

This property also features solar panels which provide a sustainable and cost-effective source of energy and ducted reverse cycle airconditioning .

Zoned for Linden Park Primary and Marryatville High School.

Features include:

Under cover parking for 3 vehicles

3 sheds

6.6 kw solar panels

Auto front gates

Purchasing this property as an investment? Talk with Kirsty Clark from our PM team and see why our Property Management department is #1 amongst all the LJ Hooker offices Worldwide.

** All information provided has been obtained from sources we believe to be accurate, however, we cannot guarantee the information is accurate and we accept no liability for any errors or omissions (including but not limited to a property's land size, floor plans and size, building age and condition). Interested parties should make their own enquiries and obtain their own legal advice.

Should this property be scheduled for auction, the Vendor's Statement (Form 1) will be available at the LJ Hooker St Peters office for 3 consecutive business days immediately preceding the auction and at the auction for 30 minutes before it starts.

RLA 61345 RLA 282965 RLA 231015

More About this Property

Property ID	2C3QFDZ
Property Type	House
Land Area	696 m ²
Including	Ducted Cooling Ducted Heating Floorboards Built-in-Robes

Marie Brus 0418 844 502

Sales Consultant | marie.brus@ljhadelaidemetro.com.au

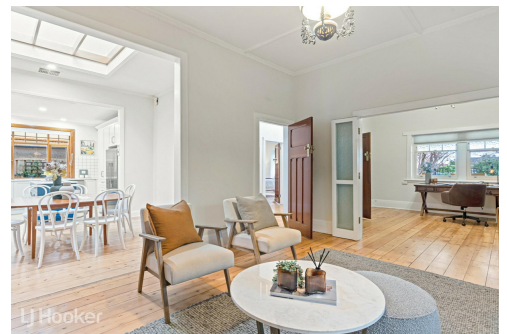
Samuel Derbali 0450 033 056

Sales Consultant | samuel.derbali@ljhadelaidemetro.com.au

LJ Hooker St Peters (08) 8362 8008

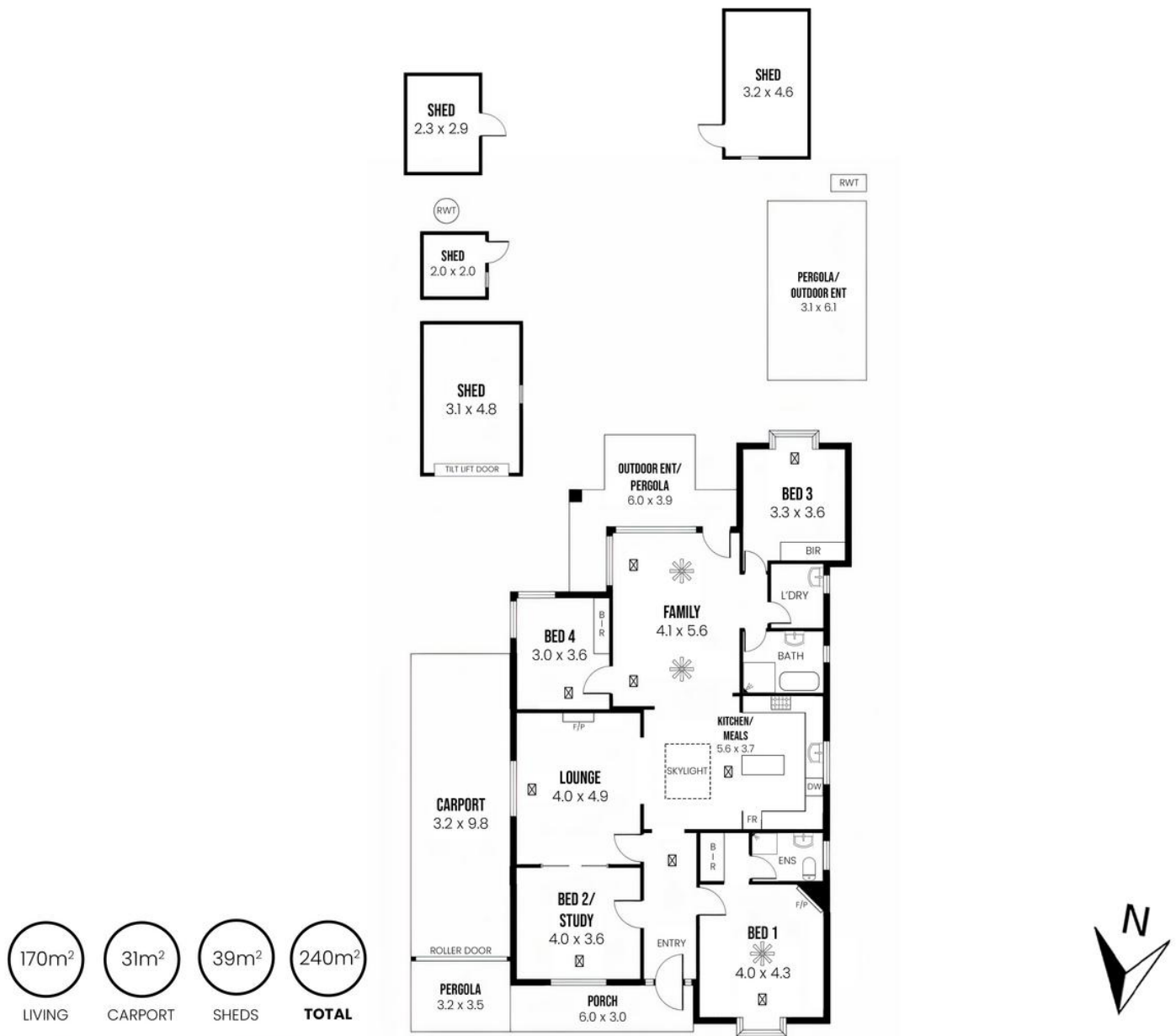
2a Portrush Road, PAYNEHAM SA 5070

stpeters.ljhooker.com.au | stpeters@ljhadelaidemetro.com.au



Disclaimer: All information contained therein is gathered from relevant third parties sources. We cannot guarantee or give any warranty about the information provided. Interested parties must rely solely on their own enquiries.

LJ Hooker St Peters
(08) 8362 8008



4 Bakewell Street, Tusmore, SA 5065

Disclaimer: The information & figures obtained within this document has been compiled from information provided by vendor & sources that we believe are reliable. No warranty is given to their accuracy & all figures are subject to change without notice.