






6 Swordfish Street, Tuross Head

3  1  1 

Elevated Single Level

This solid build brick and tile home is in a pleasant residential backstreet and offers single level living with garage/laundry underneath.

The garage is a good width with a shower/toilet at the rear, and laundry tub and tap fittings. There is high well-ventilated subfloor accessed from the garage providing plenty of extra storage space. At the rear exit of the garage there is a brick paved drying area, with adjacent stairs to the rear deck.

Entry at the front is via steps and front balcony, into the living/dining room which has RC/AC. The kitchen is to the rear with an electric stove. A sliding door opens to the rear timber deck with stairs to the back yard/laundry.

The hallway has a storage cupboard and leads to the three bedrooms, two larger with built-in storage and one smaller one. The bathroom and separate toilet are to the left off the hall. The bathroom has a separate bath and shower.

The rear yard is fenced and has garden beds and shrubs and the HWS is solar assisted. Although mostly carpeted the home has cypress pine floorboards.

FOR SALE
\$695,000

AGENTS

Garry Robertson
0435 008 465
grobertson.turosshead@ljhooker.com.au

AGENCY

LJ Hooker Tuross Head
(02) 4473 6600

All information contained therein is gathered from relevant third parties sources.
We cannot guarantee or give any warranty about the information provided.
Interested parties must rely solely on their own enquiries.

 **LJ Hooker**

This home is in a good location, suitable for private residence, rental, or holiday weekender.

Please call or email to arrange an inspection.

MORE DETAILS

Property ID	424H8R
Property Type	House
Land Area	556 m2
Including	Deck
	Built-in-Robes
	Remote Garage

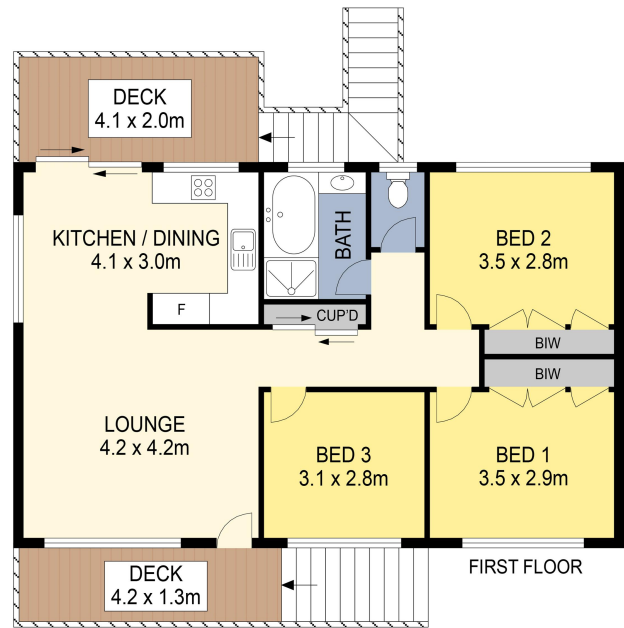
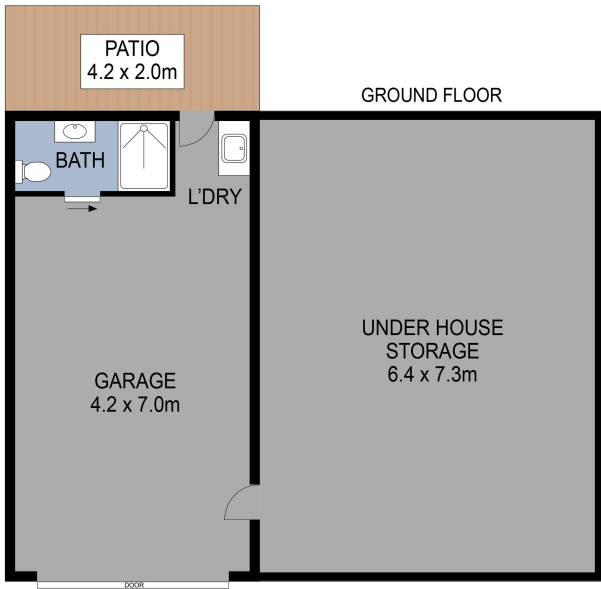
Garry Robertson 0435 008 465

Sales Consultant | grobertson.turosshead@ljhooker.com.au

LJ Hooker Tuross Head (02) 4473 6600

Shop 15/38-50 Evans Road, TUROSS HEAD NSW 2537
turosshead.ljhooker.com.au | turosshead@ljhooker.com.au





PLANS SHOWN ONLY INDICATIVE OF LAYOUT. DIMENSIONS ARE APPROXIMATE.

TOTAL: 205m²



6 Swordfish Street, Tuross Head



All information contained therein is gathered from relevant third parties sources. We cannot guarantee or give any warranty about the information provided. Interested parties must rely solely on their own enquiries.

