


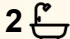

12/2 David Street, Turner

Leafy Outlook, Premium Living

Discover the perfect balance of modern comfort, lifestyle convenience, and natural beauty in this stunning apartment positioned in the heart of Turner. Designed for effortless living, this spacious two-bedroom, two-bathroom residence offers an exceptional opportunity for first home buyers, professional couples, downsizers, or astute investors looking to secure a premium property in one of Canberra's most desirable inner-city suburbs.

From the moment you step inside, you'll appreciate the light-filled interiors, contemporary finishes, and thoughtfully designed floorplan that creates a welcoming sense of space and comfort. The open-plan living and dining area flows seamlessly onto a private balcony, where breathtaking mountain vistas and tranquil leafy outlooks provide the perfect backdrop for relaxing or entertaining. Surrounded by established trees and greenery, the apartment enjoys a peaceful atmosphere rarely found so close to the city, offering a calming retreat from the pace of everyday life.

The modern kitchen is perfectly integrated into the living space and boasts top of the range Miele appliances, as well as ample storage, ideal for both casual meals and hosting guests, while the two generously sized bedrooms provide privacy and comfort. Both bedrooms include built-in robes, with the master suite complemented

2  2  2 

FOR SALE
\$875,000+

VIEW
Sun 14th Jun @ 10:00AM - 10:30AM

AGENTS
Gabby Woods
0449 901 115
gabby.woods@ljhcanberracity.com.au

AGENCY
LJ Hooker Canberra City
(02) 6249 7700

All information contained therein is gathered from relevant third parties sources.
We cannot guarantee or give any warranty about the information provided.
Interested parties must rely solely on their own enquiries.

 **LJ Hooker**

by its own stylish ensuite bathroom. A second well-appointed bathroom adds practicality for guests or shared living arrangements.

Year-round comfort is assured with ducted heating and cooling, while additional features such as a secure intercom system provide added peace of mind and convenience. Every detail has been carefully considered to create a home that is both functional and inviting.

One of the standout features of this residence is its connection to the outdoors. Whether you're enjoying your morning coffee on the balcony, watching the changing colours across the mountain ranges, or simply appreciating the lush tree-lined surrounds, the apartment offers a unique sense of serenity and privacy. The leafy outlook not only enhances the home's appeal but also creates a refreshing lifestyle experience in the centre of Canberra.

Located in the vibrant suburb of Turner, this home places you within easy reach of an array of cafés, restaurants, boutique shops, and cultural attractions. Spend weekends exploring nearby parks and walking trails, enjoy the convenience of close proximity to the CBD and light rail, or simply immerse yourself in the relaxed community atmosphere that makes Turner such a highly sought-after location.

Adding further appeal are two secure car spaces providing both convenience and additional storage flexibility.

Combining modern style, peaceful leafy surroundings, and an unbeatable location, this apartment presents an outstanding opportunity to enjoy the very best of Canberra living.

Properties of this calibre in Turner are always in high demand, so don't miss your chance to make this exceptional residence your own.

Features:

- Two spacious bedrooms with built-in robes
- Two modern bathrooms, including ensuite to master
- Light-filled open-plan living and dining area
- Private balcony with stunning mountain and leafy views
- Contemporary kitchen with quality finishes and Miele appliances
- Ducted heating and cooling for year-round comfort
- Secure intercom access for peace of mind
- Two secure underground garage spaces
- Built in 2016 with modern design and fittings
- Peaceful tree-lined outlooks offering privacy and serenity
- " Located in the heart of sought-after Turner
- " Close to cafés, restaurants, parks, and cultural attractions
- Easy access to Canberra CBD and light rail
- Ideal for first home buyers, professionals, downsizers, or investors
- Low-maintenance lifestyle in a premium inner-city location

Figures:

Internal Living: 110m²

Balcony Size: 22m²

Rates: \$1,786.59 p.a (approx.)

Body Corporate:

Land Tax: \$2,240 p.a (approx.)

EER: 5.5

Tenanted until October 2026 at \$765 p/w

Photography Disclaimer: Some images may have been virtually staged to better showcase the true potential of the rooms and spaces in the home. Alternatively, while the property may have been staged for photography, it might be vacant during your inspection.

Disclaimer:

Disclaimer: All information contained herein is gathered from sources we consider to be reliable. However, we cannot guarantee or give any warranty about the information provided. Interested parties must solely rely on their own enquiries.

Photography Disclaimer: Some images may have been virtually staged to better showcase the true potential of the rooms and spaces in the home. Alternatively, while the property may have been staged for photography, it might be vacant during your inspection.

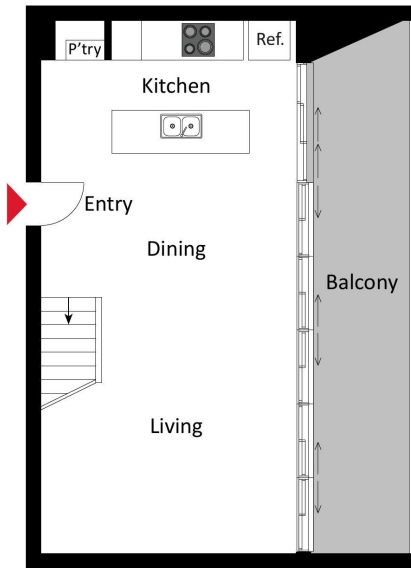
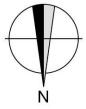
MORE DETAILS

Property ID	2FNVFHK
Property Type	Apartment
EER	5.5
Including	Air Conditioning Ducted Cooling Ducted Heating Intercom Balcony Built-in-Robes

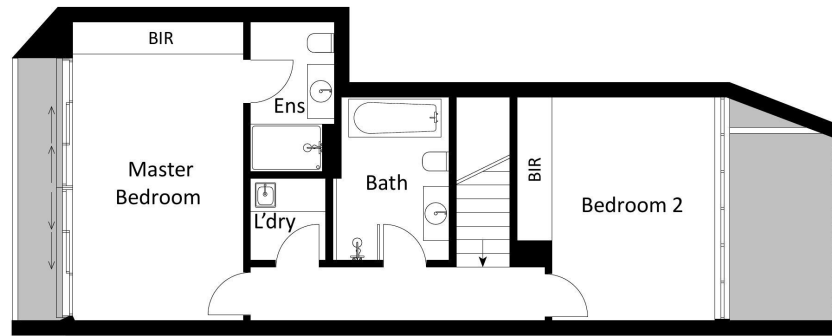
Gabby Woods 0449 901 115
Sales Consultant | gabby.woods@ljhcanberracity.com.au

LJ Hooker Canberra City (02) 6249 7700
1st Floor, 182 - 200 City Walk, CANBERRA CITY ACT 2601
canberracity.ljhooker.com.au | sales@ljhcanberracity.com.au





Lower Level



Upper Level

The floor plan is not to scale; measurements are indicative and in metres. Exterior elements are not in position. Plans should not be relied on. Interested parties should make and rely on their own enquiries.