



Turangaomoana, 1098 Tower Road

Country living

Escape to your own piece of paradise. This stunning entry level lifestyle property is positioned on a generous 3355sqm (approx.) section in the serene Turangaomoana region.

This beautifully maintained home offers a harmonious blend of comfort and rural charm, making it the ideal retreat for families or those seeking a peaceful lifestyle.

Three bedrooms plus an office designed to cater for everyone's needs. The main suite offers a massive dressing room/walk in wardrobe and opens out to a covered patio with beautiful views of the Kaimai Range and Wairere Falls.

Experience open-plan living at its finest with a seamless flow between the kitchen, dining and living areas, all with stunning views.

3

1

3

For Sale

Deadline Sale

View

Sun 27th Apr @ 2:00PM - 2:30PM

Contact

Vicki Tyler

021 509 876

Vicki.Tyler@ljhooke.co.nz



Disclaimer: All information contained therein is gathered from relevant third parties sources. We cannot guarantee or give any warranty about the information provided. Interested parties must rely solely on their own enquiries.

LJ Hooker Matamata

07 888 5677

Link Realty Ltd

Enjoy cosy evenings by the closed fire or utilize the heat pump and ceiling fans for year-round comfort. Insulated ceilings for added warmth and new quality flooring throughout, including carpet and vinyl.

Step outside to your fully fenced, level yard that offers a safe haven for children and pets.

The double garage has remote control access, plus there is an additional shed and plenty off-street parking for your convenience. The property features a garden shed for all your gardening tools and equipment.

Enjoy the stunning rural views while soaking up the sun.

This property is not just a home, it's a lifestyle choice that offers peace, privacy, and the beauty of rural living.

Make the call today and action your next move.

Deadline sale closes Wednesday 14th May 3pm (unless sold prior).

More About this Property

| | |
|---|---------------------|
| Property ID | KVSHR1 |
| Property Type | Lifestyle |
| House Size | 225 m ² |
| Land Area | 3355 m ² |
| Licensed Real Estate Agents (REAA2008) | |

Vicki Tyler 021 509 876

Sales Consultant | Vicki.Tyler@ljhooker.co.nz

LJ Hooker Matamata 07 888 5677

Link Realty Ltd

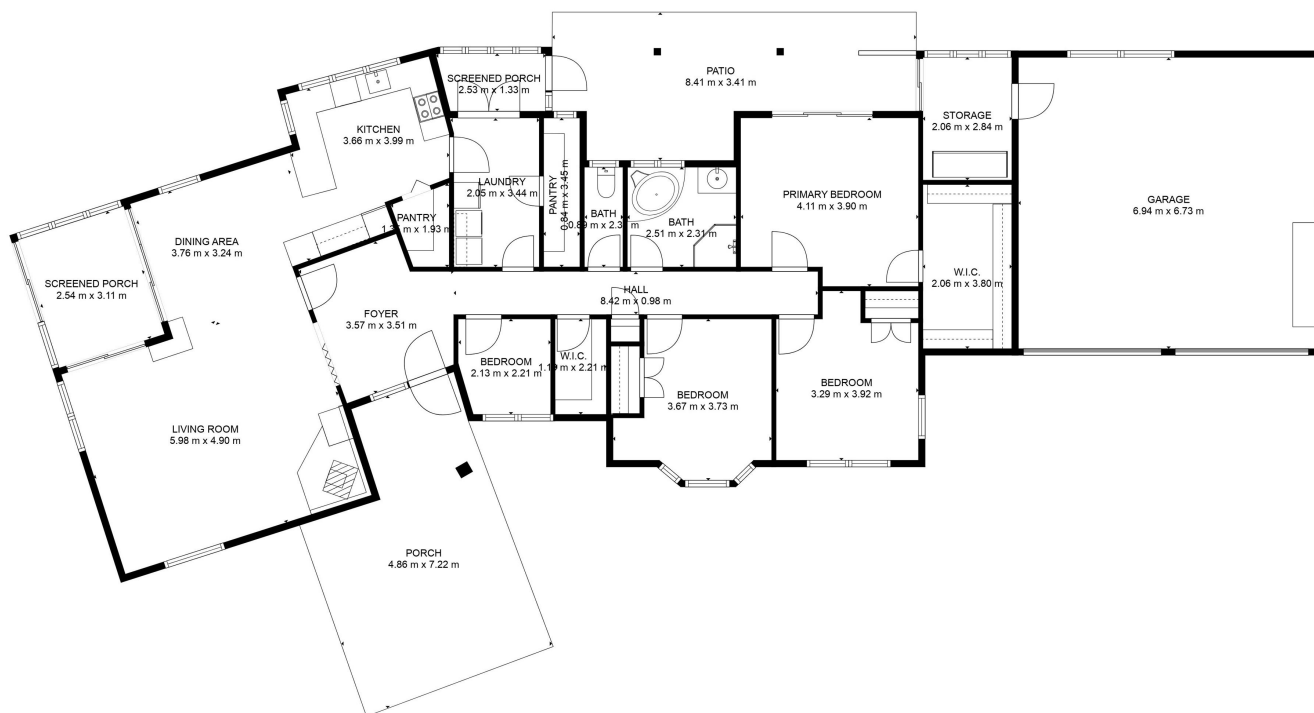
62 Arawa Street, MATAMATA NZ 3400

matamata.ljhooker.co.nz | matamata@ljhooker.co.nz



Disclaimer: All information contained therein is gathered from relevant third parties sources. We cannot guarantee or give any warranty about the information provided. Interested parties must rely solely on their own enquiries.

LJ Hooker Matamata
07 888 5677
Link Realty Ltd



TOTAL: 151 m2

Whilst bwrn.com.au has made every attempt to ensure the accuracy of the floor plan contained here, measurements are approximate and no responsibility is taken for any error, omission, or mis-statement. This plan is for illustrative purposes only.

1098 Tower road Matamata



LJ Hooker Matamata
07 888 5677
 Link Realty Ltd

Disclaimer: All information contained therein is gathered from relevant third parties sources.
 We cannot guarantee or give any warranty about the information provided. Interested parties must rely solely on their own enquiries.