



21 Bournda Circuit, Tura Beach

## COASTAL ELEGANCE WITH EXCELLENT FLOORPLAN

Set along the stunning Sapphire Coast, Tura Beach is one of NSW's most loved coastal communities-framed by national parks and pristine white-sand beaches.

This impressive residence delivers space, flexibility and coastal comfort with four generous bedrooms, three bathrooms, two living areas and four balconies. Just minutes to local beaches and close to the renowned Peter Thomson-designed Tura Beach Country Club (ranked #83 in Australia), the location is as appealing as the home itself.

Upstairs, a bright open-plan layout showcases a well-appointed kitchen with modern appliances, a large stone island bench and abundant storage. The main living area connects seamlessly to an outdoor balcony - perfect for entertaining - while taking in north-facing views across Tura Beach.

Accommodation is thoughtfully designed, including a spacious master suite with walk-in robe, ensuite and Juliette balcony. Outside, the flat yard and manicured gardens create a peaceful setting for relaxing, kids or pets.

4  3  2 

**FOR SALE**  
\$1,350,000

**VIEW**  
By Appointment

**AGENTS**  
Tim Shinnick  
0466 475 131  
tshinnick@ljhbega.com.au

**AGENCY**  
LJ Hooker Bega  
(02) 6492 4300

All information contained therein is gathered from relevant third parties sources.  
We cannot guarantee or give any warranty about the information provided.  
Interested parties must rely solely on their own enquiries.

 **LJ Hooker**

Downstairs offers an ideal guest or extended family zone, featuring the fourth bedroom with its own bathroom, a separate living room, front patio and another outdoor balcony. Also on this level are a study/home office, extra storage, a modern laundry with outdoor access, plus internal access to the garage with convenient rear entry.

There is also the convenience of the school bus stop at the end of the street, servicing schools from Eden to Bega.

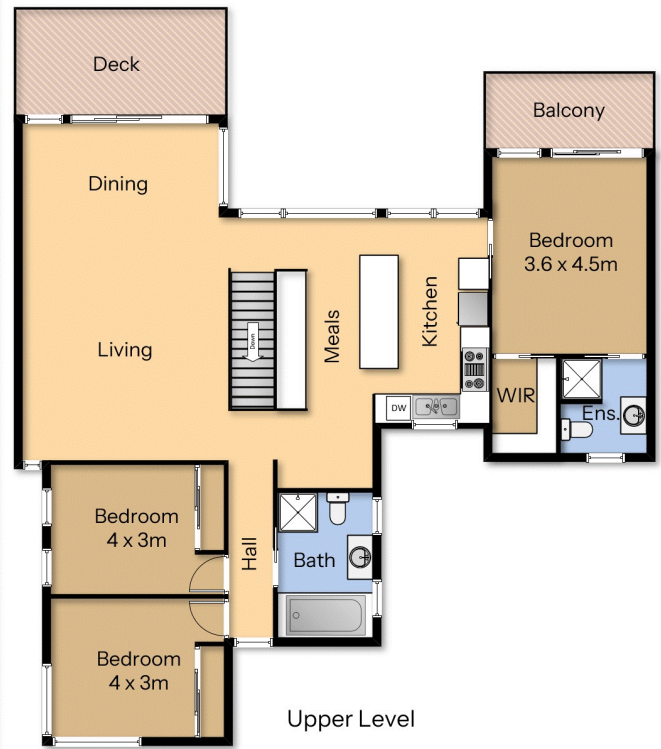
## MORE DETAILS

Property ID P2XFGN  
Property Type House

**Tim Shinnick 0466 475 131**  
Licenced Real Estate Agent | [tshinnick@ljhbega.com.au](mailto:tshinnick@ljhbega.com.au)

**LJ Hooker Bega (02) 6492 4300**  
225 Carp Street, BEGA NSW 2550  
[bega.ljhooker.com.au](http://bega.ljhooker.com.au) | [office@ljhbega.com.au](mailto:office@ljhbega.com.au)





**LJ Hooker**

4 3 2

Scale is indicative, measurements are approximate and should be used as a guide only. This plan is for marketing purposes only and should not be relied upon for valuation, construction, or renovation.

21 Bournda Cct  
Tura Beach



All information contained therein is gathered from relevant third parties sources. We cannot guarantee or give any warranty about the information provided. Interested parties must rely solely on their own enquiries.

**LJ Hooker**