






34 Kent Close, Tumoulin

## Self Sufficient | Horses | Privacy

If you've been dreaming of a quieter pace of life where you can grow your own produce, keep horses, and enjoy spectacular rural views, this outstanding lifestyle property is ready to make that dream a reality. Thoughtfully established with everything in place, it offers the perfect blend of practicality, comfort and charm.

Horse enthusiasts will appreciate the complete equine setup, featuring fenced paddocks, a shelter, and a professionally prepared arena with approximately three inches of sand, ready for riding from day one. The low-maintenance shed-style home provides a comfortable foundation to enjoy as is or personalise over time, with two spacious bedrooms, a generous open-plan living area, a well-appointed kitchen and a cosy fireplace to keep you warm through the cooler months.

Step out onto the expansive front deck and take in the stunning mountain views and sunsets that make country living so special. At the rear of the property, you'll discover an impressive collection of raised vegetable gardens and established fruit trees, creating the perfect environment for a truly self-sufficient lifestyle. A permanent creek provides a reliable water source, while a four-bay open shed offers excellent storage for vehicles, machinery, trailers or farm equipment.

2  1  4 

**FOR SALE**  
\$660,000

**VIEW**  
By Appointment

**AGENTS**  
Alex Payne  
0409 328 153  
alex@ljhookerpropertyplus.com

**AGENCY**  
LJ Hooker Atherton  
(07) 4091 3144

All information contained therein is gathered from relevant third parties sources.  
We cannot guarantee or give any warranty about the information provided.  
Interested parties must rely solely on their own enquiries.

 **LJ Hooker**

### Property Highlights:

- Complete horse setup with fenced paddocks and shelter
- Riding arena with approximately 3 inches of sand
- Low-maintenance shed-style home
- Two spacious bedrooms
- Large open-plan living area
- Well-equipped kitchen
- Fireplace for year-round comfort
- Expansive front deck with mountain views
- Stunning sunset outlook
- Raised vegetable gardens and established fruit trees
- Permanent creek water supply
- Four-bay open shed for vehicle and equipment storage
- Ideal self-sufficient lifestyle opportunity

Properties that offer this level of infrastructure, lifestyle appeal and self-sufficiency are increasingly difficult to find. Whether you're looking to run horses, grow your own food or simply escape to a peaceful rural setting, this remarkable property is ready for its next chapter.

Contact exclusive agent Alex Payne today on 0409 328 153.

### MORE DETAILS

Property ID	SWAF1S
Property Type	House
Land Area	1.35 hectare
Including	Deck
	Outdoor Entertaining
	Fully Fenced

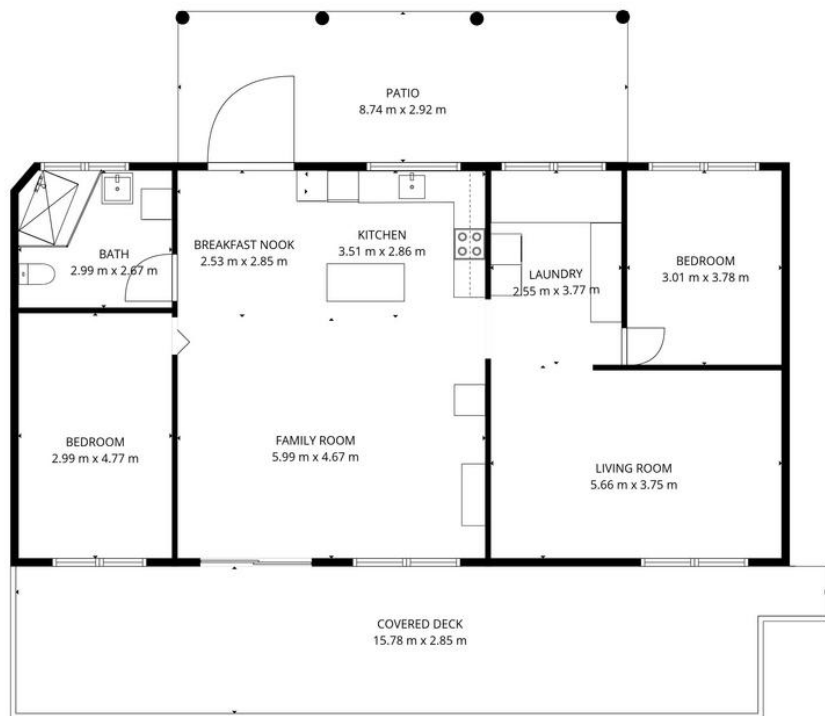
### Alex Payne 0409 328 153

Property Sales Consultant | [alex@ljhookerpropertyplus.com](mailto:alex@ljhookerpropertyplus.com)

### LJ Hooker Atherton (07) 4091 3144

10 Main Street, ATHERTON QLD 4883  
[atherton.ljhooker.com.au](http://atherton.ljhooker.com.au) | [atherton@ljhatherton.com](mailto:atherton@ljhatherton.com)





**TOTAL: 112 m<sup>2</sup>**  
 1st floor: 112 m<sup>2</sup>  
 EXCLUDED AREAS: PATIO: 26 m<sup>2</sup>, COVERED DECK: 43 m<sup>2</sup>, WALLS: 7 m<sup>2</sup>

FLOOR PLAN CREATED BY CUBICASA APP. MEASUREMENTS DEEMED HIGHLY RELIABLE BUT NOT GUARANTEED.

 LJ Hooker