



## Tumoulin, 14 Condon Road

Charm | Cottage | History

The old railway house from the Tablelands mining era. Nestled on a generous 1,005 m<sup>2</sup> allotment, this character-filled home offers charm, serenity, and a unique connection to the past.

Property Highlights:

**Spacious Bedrooms:** Two generously sized bedrooms provide comfort and space.

**Large Kitchen:** A practical and functional kitchen with ample bench space and storage to meet all your needs.

**Cozy Living:** Carpeted throughout, the home exudes warmth and comfort. Living and dining space are ideal for relaxing.



**For Sale**  
Offers Over \$349,000

**View**  
[ljhooker.com.au/RUDF1S](https://ljhooker.com.au/RUDF1S)

**Contact**  
**Alex Payne**  
0409 328 153  
[alex@ljhookerpropertyplus.com](mailto:alex@ljhookerpropertyplus.com)



**LJ Hooker Atherton**  
**(07) 4091 3144**

**Disclaimer:** All information contained therein is gathered from relevant third parties sources. We cannot guarantee or give any warranty about the information provided. Interested parties must rely solely on their own enquiries.

Functional Spaces: A tiled mudroom and laundry add practicality for those days in the gardens.

Inviting Veranda: Relax on the beautiful timber veranda overlooking the decommissioned railway line, where wallabies often visit in the peaceful early hours.

Surrounded by stunning gum trees and natural forest, this property offers privacy with no neighbors on three sides. Enjoy the benefits of a fully fenced block with established trees, a chook pen, and plenty of space for outdoor living.

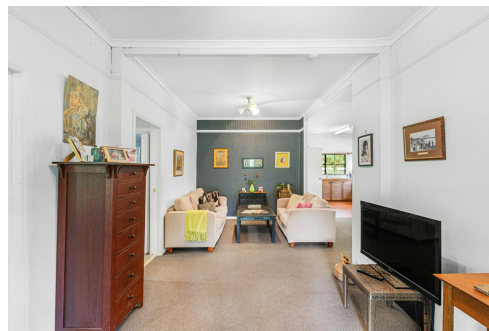
Don't delay contact exclusive agent Alex Payne today on 0409 328 153 for further information.

## More About this Property

<b>Property ID</b>	RUDF1S
<b>Property Type</b>	House
<b>Including</b>	Deck Fully Fenced

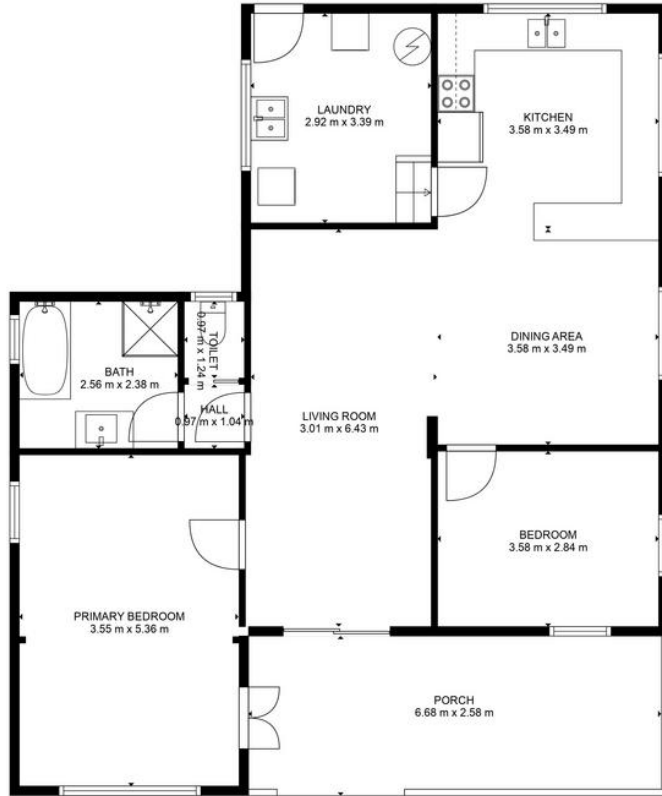
**Alex Payne 0409 328 153**  
Property Sales Consultant | [alex@ljhookerpropertyplus.com](mailto:alex@ljhookerpropertyplus.com)

**LJ Hooker Atherton (07) 4091 3144**  
10 Main Street, ATHERTON QLD 4883  
[atherton.ljhooker.com.au](http://atherton.ljhooker.com.au) | [atherton@ljhatherton.com](mailto:atherton@ljhatherton.com)



**LJ Hooker Atherton**  
**(07) 4091 3144**

**Disclaimer:** All information contained therein is gathered from relevant third parties sources. We cannot guarantee or give any warranty about the information provided. Interested parties must rely solely on their own enquiries.



**TOTAL: 94 m<sup>2</sup>**  
 FLOOR 1: 94 m<sup>2</sup>  
 EXCLUDED AREAS: PORCH: 17 m<sup>2</sup>

FLOOR PLAN CREATED BY CUBICASA APP; MEASUREMENTS DEEMED HIGHLY RELIABLE BUT NOT GUARANTEED.

