



66 Molsten Avenue, Tumbi Umbi




## Contact Agent

Perfectly positioned in the highly sought-after suburb of Tumbi Umbi, this beautifully presented, single-level family home offers space, style, and serenity. Located just minutes from some of the Central Coast's finest beaches, lifestyle hubs, and with convenient access to the freeway connecting Sydney and Newcastle, this is a property that ticks every box.

Set on a generous 658sqm corner block with scenic bushland views, this stunning home is ideal for families, downsizers, or anyone seeking a peaceful lifestyle with all the modern comforts.

Key features:

- Single-level living in a friendly, quiet neighbourhood
- Four spacious bedrooms, including master with ensuite
- Light-filled open plan living areas designed for modern family living
- Gourmet kitchen with quality appliances and ample storage

4  2  2 

**FOR SALE**  
Contact Agent

### AGENTS

Craig Trehearne  
0478 072 257  
craig.trehearne@ljhooker.com.au

### AGENCY

LJ Hooker Tumbi Umbi | Killarney Vale |  
Bateau Bay  
(02) 4389 1722

All information contained therein is gathered from relevant third parties sources.  
We cannot guarantee or give any warranty about the information provided.  
Interested parties must rely solely on their own enquiries.



- Double lock-up garage plus off-street parking for a boat or small caravan
- Stylish main bathroom servicing the additional bedrooms
- Large covered entertaining area overlooking the sleek in-ground pool and private surrounds
- Peaceful corner block with tranquil bushland outlook
- Ideal for mature-aged downsizers with plenty of space and easy living
- Ducted air conditioning, ceiling fans, gas fireplace, solar system, and attached workshop

This property is more than just a home - it's a lifestyle. Whether you're entertaining guests by the pool, enjoying the peaceful natural surroundings, or exploring nearby beaches, you'll love everything this exceptional home has to offer.

Please contact Craig today for more information or to arrange a private inspection.

Disclaimer: All information contained herein is gathered from sources we consider to be reliable, however we cannot guarantee or give any warranty about the information provided. All images, border/s, property boundaries and floor plans are indicative of the property and for illustrative purposes only. Any development potential stated herein is suggestive only and may be subject to relevant approvals, as such it is not to be relied upon. All distances and measurements are approximate. Interested parties must solely rely on their own enquiries.

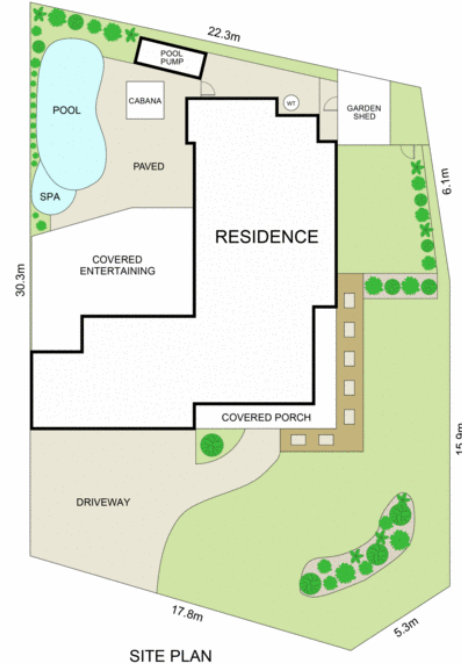
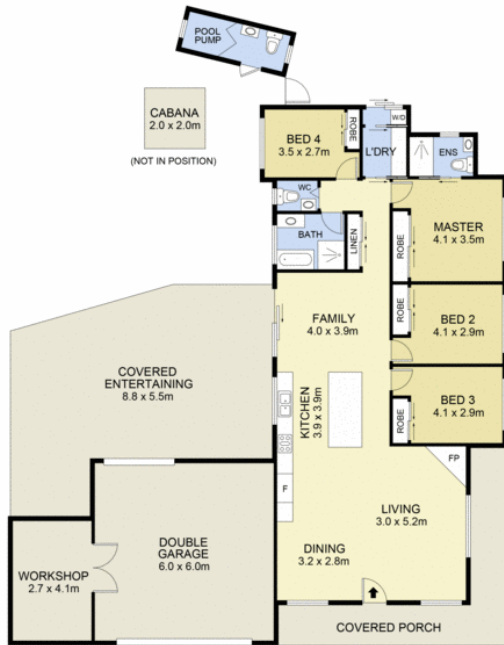
## MORE DETAILS

Property ID	WJ1GJF
Property Type	House
Land Area	658 m2

**Craig Trehearne 0478 072 257**  
Sales Consultant L.R.E.A | [craig.trehearne@ljhooker.com.au](mailto:craig.trehearne@ljhooker.com.au)

**LJ Hooker Tumbi Umbi | Killarney Vale | Bateau Bay (02) 4389 1722**  
Shop 2, 140 Wyong Road, KILLARNEY VALE NSW 2261  
[tumbiumbi.ljhooker.com.au](mailto:tumbiumbi.ljhooker.com.au) | [tumbiumbi@ljhooker.com.au](mailto:tumbiumbi@ljhooker.com.au)





Scale in metres. Indicative only. Dimensions are approximate. All information contained herein is gathered from sources we believe to be reliable. However we cannot guarantee its accuracy and interested persons should rely on their own enquiries

INT : 178m<sup>2</sup>  
EXT : 73m<sup>2</sup> **NOT TO SCALE**



## 66 Molsten Avenue, Tumbi Umbi