

Tumbi Umbi, 3 Tesoriero Tce

Spacious Family Home with Elevated Position

Presenting this unique family home with an amazing feeling of air, space, light and occupying a premium elevated position with distant valley and bushland views from key living areas of the home. Positioned in the sought after suburb of Tumbi Umbi this immaculate family home is found within only minutes drive to some of the Central Coast finest beaches and lifestyle choices, and a short drive to freeway connecting Sydney and Newcastle. This stunning property is looking for new owners, and will suit all types of buyers looking for that something special! The home showcases the perfect lifestyle to ensure indoor and outdoor living flows seamlessly at its best. Designer interiors and quality finishes include stone benchtops throughout kitchen and laundry with chic finishes to all the bathrooms. Wide sliding doors create a seamless flow to the generous sized balcony capturing the stunning western sunsets. Expansive open plan living for entertaining and relaxing, spacious alfresco outdoor area for that spa and undercover deck creating the feeling of a private oasis.



For Sale
Please Call

View
ljhooker.com.au/WEYGJF

Contact
Craig Trehearne
0478 072 257
craig.trehearne@ljhooker.com.au



Disclaimer: All information contained therein is gathered from relevant third parties sources. We cannot guarantee or give any warranty about the information provided. Interested parties must rely solely on their own enquiries.

**LJ Hooker Tumbi Umbi | Killarney
Vale | Bateau Bay
(02) 4389 1722**

- * Five spacious bedrooms, master suite with, ensuite and walk in robe.
- * Generous open plan lounge/formal dining areas with plenty of natural light.
- * Gourmet kitchen with state of the art appliances.
- * Butlers pantry combined with spacious laundry
- * Large sky lights positioned around the house for extra sunlight to living areas
- * Ducted air conditioning, ceiling fans, modern fitout.
- * Double garage, with plenty of off street parking and extra storage space.
- * Stylish bathrooms accommodating extra bedrooms.
- * Stunning presentation throughout and surely to impress.

Disclaimer: All information contained herein is gathered from sources we consider to be reliable, however we cannot guarantee or give any warranty about the information provided. All images, border/s, property boundaries and floor plans are indicative of the property and for illustrative purposes only. Any development potential stated herein is suggestive only and may be subject to relevant approvals, as such it is not to be relied upon. All distances and measurements are approximate. Interested parties must solely rely on their own enquiries.

More About this Property

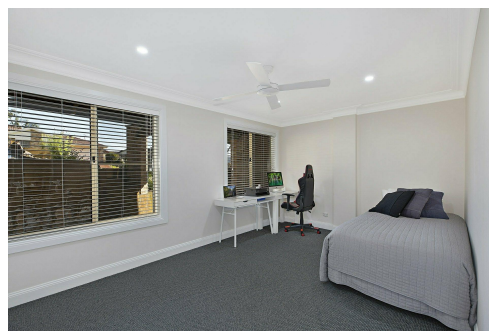
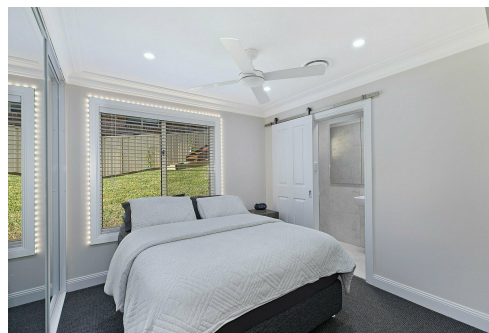
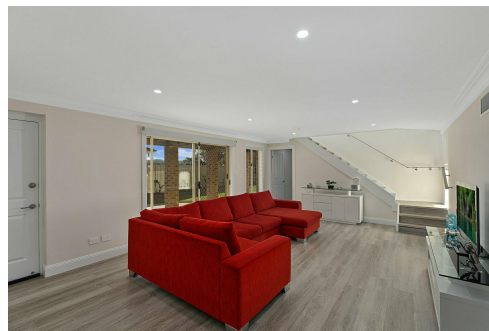
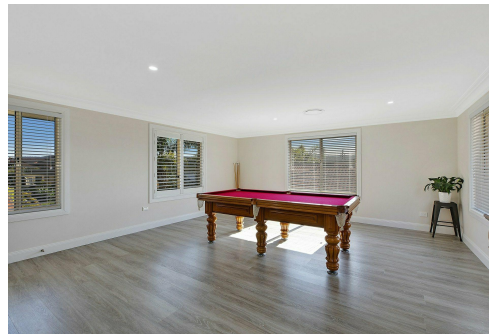
Property ID	WEYGJF
Property Type	House
Land Area	482 m ²

Craig Trehearne 0478 072 257

Sales Consultant L.R.E.A | craig.trehearne@ljhooker.com.au

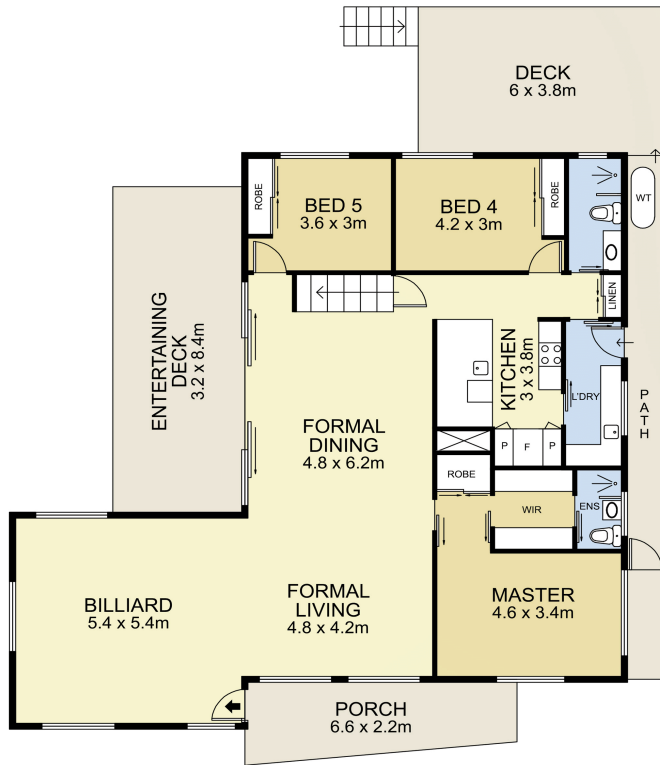
LJ Hooker Tumby Umbi | Killarney Vale | Bateau Bay (02) 4389 1722

Shop 2, 140 Wyong Road, KILLARNEY VALE NSW 2261
tumbiumbi@ljhooker.com.au | tumbiumbi@ljhooker.com.au

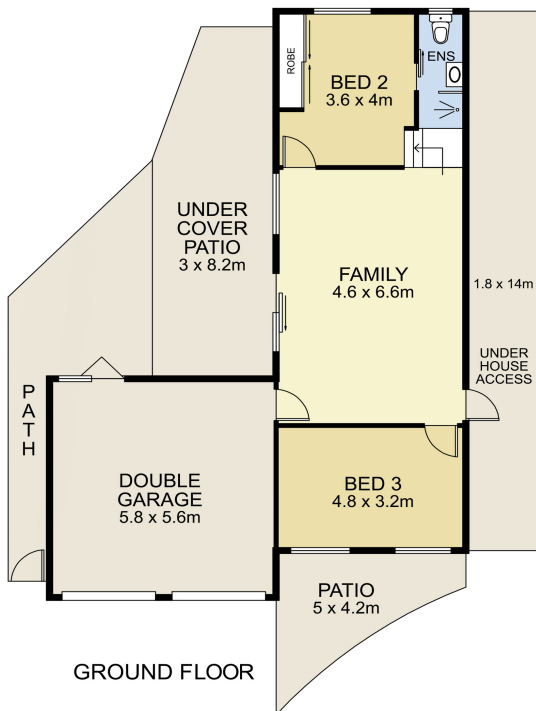


Disclaimer: All information contained therein is gathered from relevant third parties sources. We cannot guarantee or give any warranty about the information provided. Interested parties must rely solely on their own enquiries.

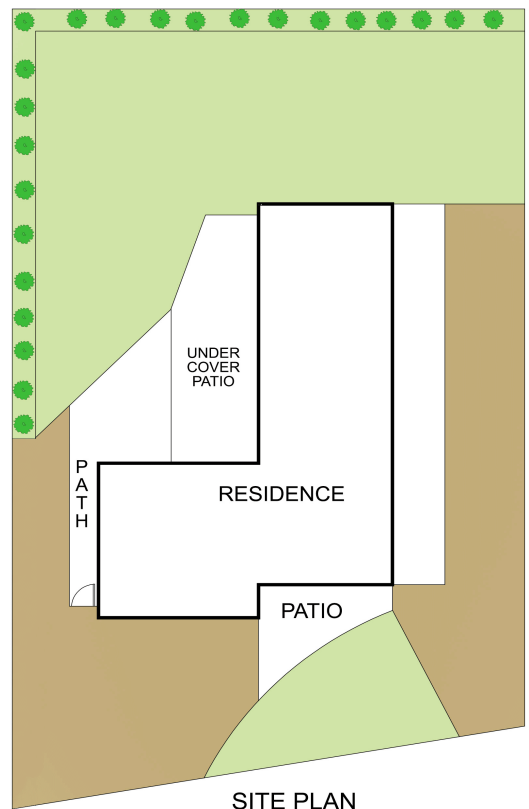
LJ Hooker Tumby Umbi | Killarney Vale | Bateau Bay (02) 4389 1722



FIRST FLOOR



GROUND FLOOR



SITE PLAN

0 1 2 3 4 5 SCALE (METRES)

Scale in metres. Indicative only. Dimensions are approximate. All information contained herein is gathered from sources we believe to be reliable. However we cannot guarantee its accuracy and interested persons should rely on their own enquiries

INT : 256 m²
EXT : 136 m²



NOT TO SCALE

3 Tesoriero Terrace, Tumbi Umbi