



3 Kingfisher Place, Tumbi Umbi

Ideal for First Home Buyers/ Investors!!!

Great buying opportunity is this three-bedroom single level home, positioned on an elevated 556 sqm block of land. Found in a quiet street, close to lake, schools and transport and easy 10-minute drive to the fee way to Sydney or Newcastle. The property is waiting on new owners to add their own touches and move to a sought-after location on the Central coast.

- Kitchen is compact and well presented.
- Functional floorplan with combined lounge/dinning.
- Bedrooms are good size.
- Bathroom is well presented
- Spacious enclosed sunroom & undercover pergola area.
- Double garage with plenty of off-street parking.
- Backyard is fully fenced with private surrounds.
- Ideal for first home or Investment purchase.

Owner seeking offers today!

Disclaimer: All information contained herein is gathered from sources we consider to be reliable, however we cannot guarantee or give any warranty about the information provided. All images, border/s, property boundaries and floor plans are indicative of the property and

3 1 2

FOR SALE
\$800,000 - \$850,000

AGENTS

Craig Trehearne
0478 072 257
craig.trehearne@ljhooker.com.au

AGENCY

LJ Hooker Tumbi Umbi | Killarney Vale |
Bateau Bay
(02) 4389 1722

All information contained therein is gathered from relevant third parties sources.
We cannot guarantee or give any warranty about the information provided.
Interested parties must rely solely on their own enquiries.

LJ Hooker

for illustrative purposes only. Any development potential stated herein is suggestive only and may be subject to relevant approvals, as such it is not to be relied upon. All distances and measurements are approximate. Interested parties must solely rely on their own enquiries.

MORE DETAILS

Property ID	WQTGJF
Property Type	House
Land Area	556 m2

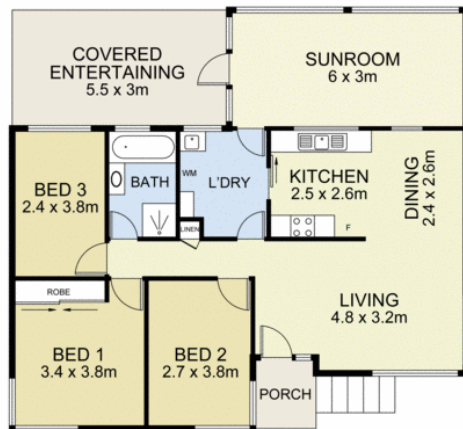
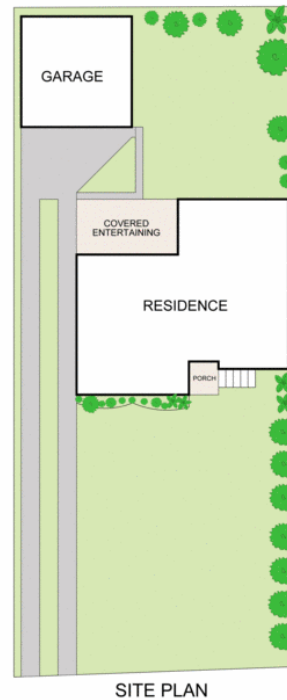
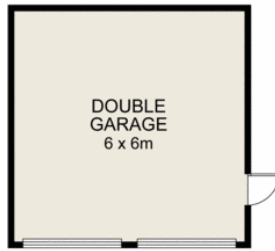
Craig Trehearne 0478 072 257

Sales Consultant L.R.E.A | craig.trehearne@ljhooker.com.au

LJ Hooker Tumby Umbi | Killarney Vale | Bateau Bay (02) 4389 1722

Shop 2, 140 Wyong Road, KILLARNEY VALE NSW 2261
tumbiumbi.ljhooker.com.au | tumbiumbi@ljhooker.com.au





0 1 2 3 4 5
SCALE METRES

Scale in metres. Indicative only. Dimensions are approximate. All information contained herein is gathered from sources we believe to be reliable. However we cannot guarantee its accuracy and interested persons should rely on their own enquiries

INT : 97m²
EXT : 19m²
GARAGE : 36m² **NOT TO SCALE**

3 Kingfisher Place, Tumbi Umbi