

## Tumbi Umbi, 28 Brenda Crescent

New build or Renovate

Great buying opportunity awaits with this two-bedroom old cottage, positioned on a 474sqm level block of land. Found close to lake, schools and transport and easy 10-minute drive to the freeway to Sydney or Newcastle. The property is waiting on new owners to add their own touches & renovate at their own pace, if required or knock over and rebuild. Small block with many options available to turn this land into your perfect home or use the land for your own purpose.

- \* Found in a sought-after location.
- \* Block to be sold in its present state!
- \* Demolish existing dwelling and build new home
- \* Dwelling is old and needs a lot of attention.
- \* Found in quiet street close to all amenities.

Owner seeking offers today



**Disclaimer:** All information contained therein is gathered from relevant third parties sources. We cannot guarantee or give any warranty about the information provided. Interested parties must rely solely on their own enquiries.

**SOLD**

2 

1 

0 

**For Sale**  
Please Call

**View**  
[l.jhooker.com.au/WB0GJF](https://l.jhooker.com.au/WB0GJF)

**Contact**  
**Craig Trehearne**  
0478 072 257  
[craig.trehearne@l.jhooker.com.au](mailto:craig.trehearne@l.jhooker.com.au)

**LJ Hooker Tumbi Umbi | Killarney  
Vale | Bateau Bay  
(02) 4389 1722**

Disclaimer: All information contained herein is gathered from sources we consider to be reliable, however we cannot guarantee or give any warranty about the information provided. All images, border/s, property boundaries and floor plans are indicative of the property and for illustrative purposes only. Any development potential stated herein is suggestive only and may be subject to relevant approvals, as such it is not to be relied upon. All distances and measurements are approximate. Interested parties must solely rely on their own enquiries.

## More About this Property

<b>Property ID</b>	WB0GJF
<b>Property Type</b>	House
<b>Land Area</b>	474 m <sup>2</sup>

### **Craig Trehearne 0478 072 257**

Sales Consultant L.R.E.A | [craig.trehearne@ljhooker.com.au](mailto:craig.trehearne@ljhooker.com.au)

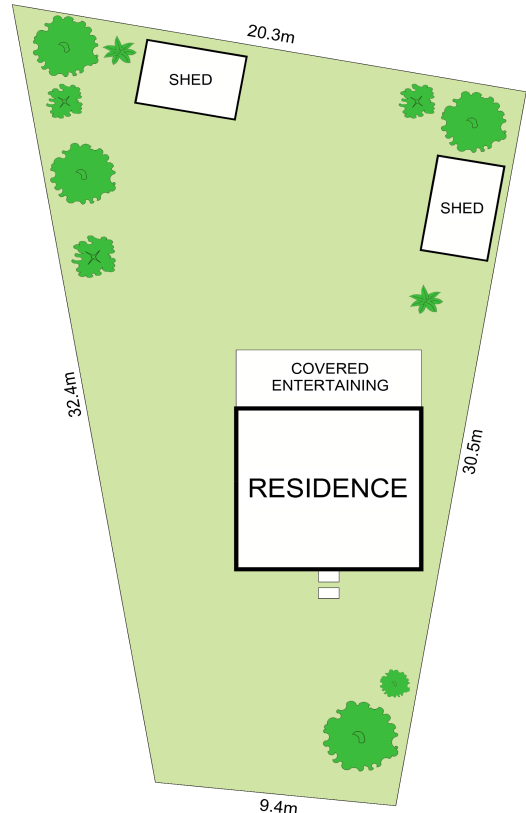
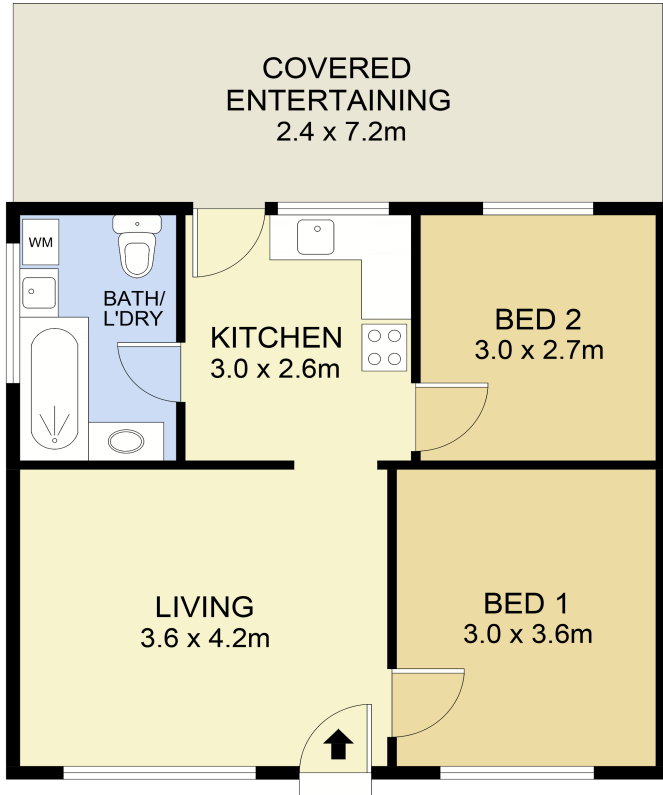
### **LJ Hooker Tumby Umbi | Killarney Vale | Bateau Bay (02) 4389 1722**

Shop 2, 140 Wyong Road, KILLARNEY VALE NSW 2261  
[tumbiumbi.ljhooker.com.au](http://tumbiumbi.ljhooker.com.au) | [tumbiumbi@ljhooker.com.au](mailto:tumbiumbi@ljhooker.com.au)



**Disclaimer:** All information contained therein is gathered from relevant third parties sources. We cannot guarantee or give any warranty about the information provided. Interested parties must rely solely on their own enquiries.

**LJ Hooker Tumby Umbi | Killarney  
Vale | Bateau Bay  
(02) 4389 1722**



**SITE PLAN**



INT : 48m<sup>2</sup>  
EXT : 17m<sup>2</sup> **NOT TO SCALE**

## 28 Brenda Crescent, Tumbi Umbi