

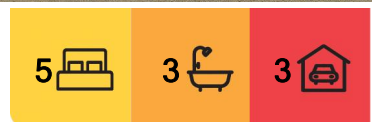
Tumby Umbi, 19 Tumby Road

Enormous Potential - Huge Parcel of Land

Positioned in the sought after suburb of Tumby Umbi is this well-presented older style residence with enormous potential. Set on a gently sloping 1,300sqm block with re development potential, or possible granny flat for the growing family or savvy investor. The homes natural bush setting is the ideal tree change for those buyers looking for that country lifestyle within suburbia. The prime main road position is just moments to local shops, transport and the unlimited lifestyle choices of the Central Coast has to offer.

Embracing the surrounding bushland the property features:

Five bedrooms, large main bedroom found at the rear of house with plenty of natural light, walk in robe and private ensuite . All rooms are spacious, with the 4th bedroom having its own sitting room / study. Family style kitchen and well-presented bathrooms ready for improvements.



For Sale
Please Call

View
ljhooker.com.au/WBEGJF

Contact
Craig Trehearne
0478 072 257
craig.trehearne@ljhooker.com.au



Disclaimer: All information contained therein is gathered from relevant third parties sources. We cannot guarantee or give any warranty about the information provided. Interested parties must rely solely on their own enquiries.

**LJ Hooker Tumby Umbi | Killarney
Vale | Bateau Bay
(02) 4389 1722**

Exposed timber flooring throughout main dwelling with plenty of opportunity to add your own touches and take advantage of the blank cavass to renovate at your own pace.

The property overlooks the private grounds and has a serene bush outlook.

Lower level offers an extra-large double garage with plenty of under house storage and workshop space. Two large water tanks on site and private surroundings.

This property is defiantly one of a kind and is sure to impress anyone looking outside the circle for the beautiful natural lifestyle change.

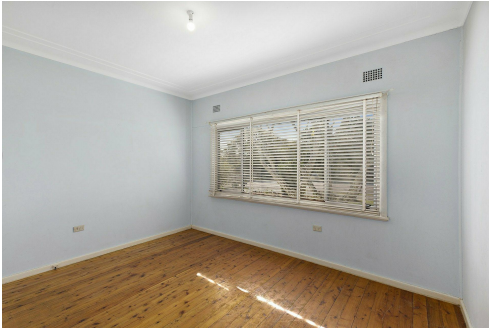
Disclaimer: All information contained herein is gathered from sources we consider to be reliable, however we cannot guarantee or give any warranty about the information provided. All images, border/s, property boundaries and floor plans are indicative of the property and for illustrative purposes only. Any development potential stated herein is suggestive only and may be subject to relevant approvals, as such it is not to be relied upon. All distances and measurements are approximate. Interested parties must solely rely on their own enquiries.

More About this Property

Property ID	WBEGJF
Property Type	House
Land Area	1303 m²

Craig Trehearne 0478 072 257
Sales Consultant L.R.E.A | craig.trehearne@ljhooker.com.au

LJ Hooker Tumbi Umbi | Killarney Vale | Bateau Bay (02) 4389 1722
Shop 2, 140 Wyong Road, KILLARNEY VALE NSW 2261
tumbiumbi.ljhooker.com.au | tumbiumbi@ljhooker.com.au



Disclaimer: All information contained therein is gathered from relevant third parties sources. We cannot guarantee or give any warranty about the information provided. Interested parties must rely solely on their own enquiries.

**LJ Hooker Tumbi Umbi | Killarney
Vale | Bateau Bay
(02) 4389 1722**



0 1 2 3 4 5
SCALE (METRES)

Scale in metres. Indicative only. Dimensions are approximate. All information contained herein is gathered from sources we believe to be reliable. However we cannot guarantee its accuracy and interested persons should rely on their own enquiries

INT : 328m²
EXT : 28m² **NOT TO SCALE**



19 Tumbi Road, Tumbi Umbi