



35 Narada Road, Truganina

35 Narada Road, Truganina — Where Western Growth Meets Timeless Comfort

Imagine a home where morning school runs are simple, evening commutes are smooth, and weekends unfold at your own pace. At 35 Narada Road, this vision becomes reality in a setting designed with family life at its heart.

Nestled in the heart of Truganina, this property places you and your family within easy reach of everything that matters. Quality schools such as Westbourne Grammar and Al-Taqwa College are just moments away, offering educational excellence without the stress of long travel. Local parks and playgrounds dot the surrounding neighbourhood, providing safe and inviting spaces for children to explore and families to gather.

The community atmosphere in this pocket of Melbourne's west is one of genuine warmth. Neighbours know one another, streets are welcoming, and there is a sense of belonging that transforms a house into a home. The nearby Federation Trail offers picturesque pathways for weekend bike rides, morning jogs, or leisurely strolls that bring the family together.

4 🏠 2 🚿 2 🚗

FOR SALE
\$750,000 - \$800,000

VIEW
By Appointment

AGENCY
LJ Hooker City Residential
(03) 9600 2166

All information contained therein is gathered from relevant third parties sources.
We cannot guarantee or give any warranty about the information provided.
Interested parties must rely solely on their own enquiries.



The home itself has been designed with real life in mind. Spacious living areas invite connection-whether it's shared meals in the kitchen, movie nights in the family room, or quiet afternoons spent reading by the window. The bedrooms provide peaceful sanctuaries at the end of each day, with thoughtful touches that prioritise comfort and rest.

Storage solutions are woven seamlessly into the design, ensuring that everyday life feels organised and uncluttered. Outside, the low-maintenance yard offers room for children to play and adults to unwind, without demanding endless hours of upkeep.

With easy access to local shopping centres, cafes, and essential services, everything you need is close at hand. This is the kind of address where families grow, memories are made, and life feels beautifully balanced.

MORE DETAILS

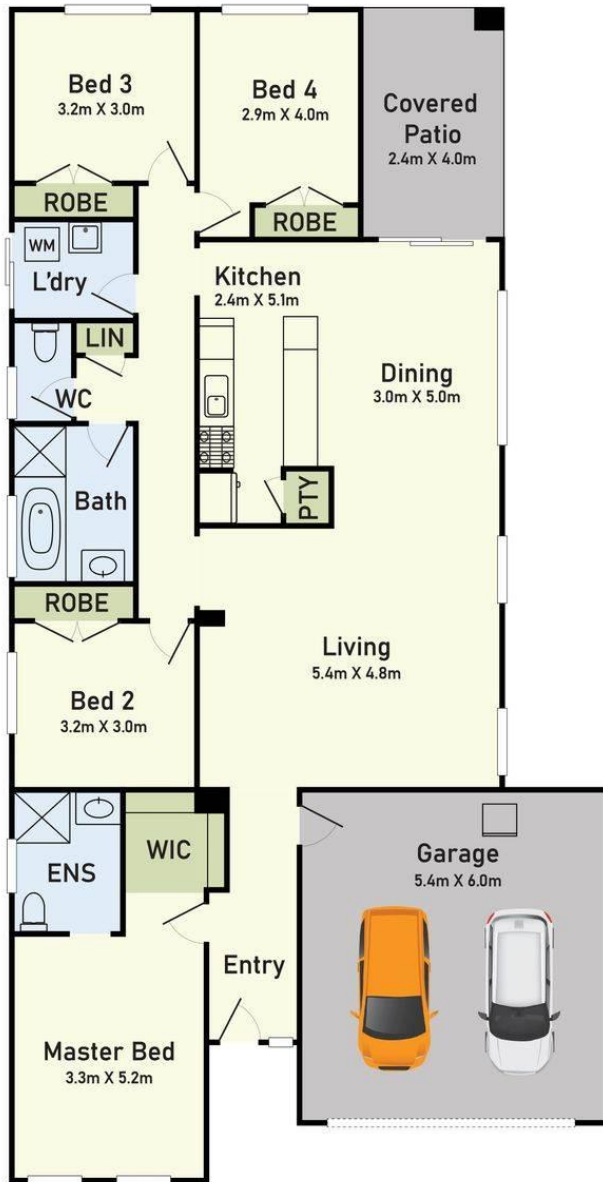
Property ID	PHSHC2
Property Type	House
Land Area	400 m2
Including	Air Conditioning
	Close to Schools
	Close to Shops
	Close to Transport

LJ Hooker City Residential (03) 9600 2166

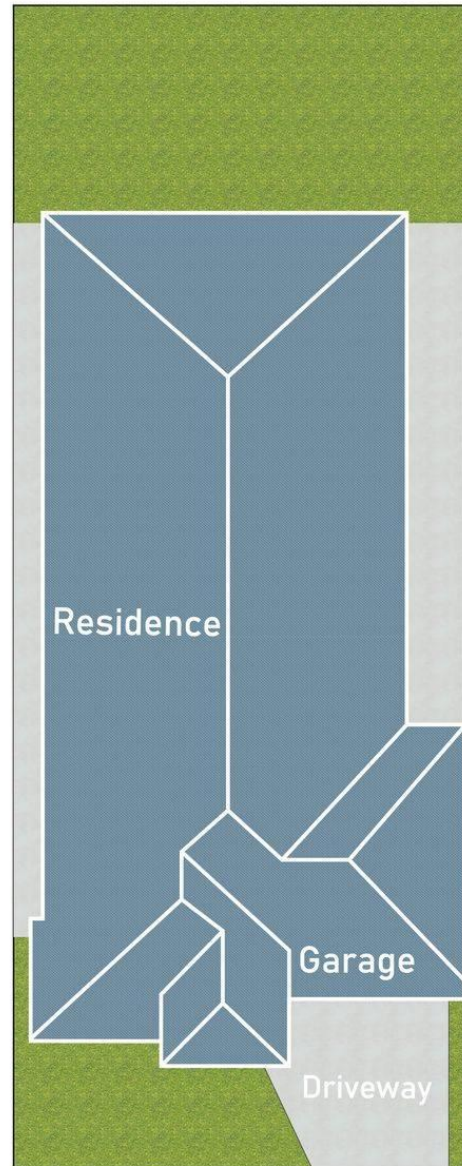
Upper Ground Floor, 439-445 Lonsdale St, MELBOURNE VIC 3000
cityresmelbourne.ljhooker.com.au |
cityresmelbourne@ljhooker.com.au



Floor Plan



Site Plan



35 Narada Road, Truganina

* Dimensions are approximate and for illustrative purposes only