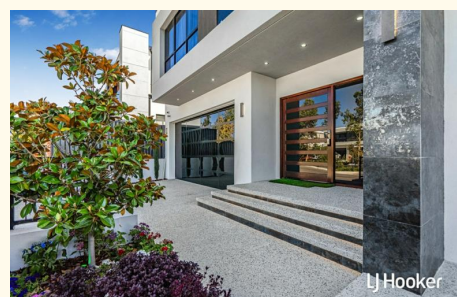




LJ Hooker



LJ Hooker



LJ Hooker

454 Torwood Avenue, Treeby

Inspection by Appointment Only

Some homes are lived in. Others are remembered.


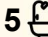
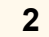
Set proudly overlooking the calm shimmer of the lake, this architectural masterpiece tells a story of family, legacy, and a standard of luxury rarely seen in the market. Designed with intention, crafted with finesse, and built for multiple generations, this is a home where every chapter of life finds its place.

THE GROUND FLOOR —WHERE THE STORY BEGINS

The moment you step inside, the world opens up. The grand entry guides you forward until the breathtaking double-height void reveals itself - an architectural moment that instantly sets the tone. Sunlight flows through the expansive living spaces, filling the home with warmth and energy.

A Suite for Today's Generations

To your right sits the beautifully appointed Master Suite, created as a retreat for parents or grandparents seeking comfort and privacy. The elegant ensuite and walk-in robe enhance the sense of calm, offering a space where mornings feel slow and evenings feel effortless.

6  5  2 

FOR SALE

Expressions of Interest

VIEW

By Appointment

AGENTS

Sajad Ahmadyar

0405 602 210

saj.ahmadyar@ljhooker.com.au

Amir Ahmadyar

0469 375 873

amir.ahmadyar@ljhooker.com.au

AGENCY

LJ Hooker Thornlie | Canning Vale

(08) 9459 7788

All information contained therein is gathered from relevant third parties sources. We cannot guarantee or give any warranty about the information provided. Interested parties must rely solely on their own enquiries.

 LJ Hooker

A Theatre for Shared Memories

The dedicated theatre room invites movie nights, sport replays and laughter shared across generations. It's a room destined for memories - intimate, cozy and perfectly positioned.

A Living Space That Breathes

Walk deeper and the home truly comes alive. The soaring void above the living and dining area creates openness that feels almost sculptural. Every detail - from the architectural lines to the spacious layout - enhances the feeling of grand luxury.

The designer kitchen anchors the space with seamless flow to a full scullery. Whether preparing family dinners or large gatherings, everything has been crafted for ease, beauty and practicality.

A Backyard That Feels Like a Resort

The outdoors becomes a natural extension of the living space. Sliding doors reveal the private alfresco. This is where birthdays are celebrated, tea is shared, and the day quietly winds down.

A Second Bedroom Suite for Flexibility

Also on this level is a private bedroom with its own ensuite - a perfect solution for aging parents, long-term guests or an adult child seeking independence. It completes a floor designed for comfort, togetherness and adaptability.

THE UPPER FLOOR —WHERE NEW CHAPTERS UNFOLD

The staircase rises gently, leading you to a new perspective of the home. From the landing, the dramatic void below reconnects both levels, creating unity while allowing each floor its own identity.

A Complete Home Above

The upper level offers remarkable independence - a true multigenerational haven. A full second kitchen, complete with scullery, allows this level to operate as its own private residence.

A central living area welcomes teenagers, guests or extended family to gather, relax or study. With direct access to balconies, this level becomes a peaceful retreat overlooking the landscape

Master Suite —Upper Floor Wing

On the upper level, a second Master Suite occupies its own private wing. This suite is elevated in every sense - with generous proportions, a stunning walk-in robe, a luxe ensuite, and beautiful natural light.

It is the ideal retreat for adult children, for guests staying long-term, or for families who value flexibility and privacy.

Two master suites, positioned at opposite wings of the home, create the ultimate multigenerational layout - harmonious, respectful, and future-proof.

Living, Cooking & Everyday Freedom

The upper floor is more than an extension - it is a home within a home.

A full second kitchen with scullery allows this level to function independently, perfect for extended families or those who love to entertain.

A spacious living area becomes a peaceful hub for teenagers, visiting

relatives, or family gatherings.

Bedrooms With Purpose

Surrounding this central living zone are additional well-appointed bedrooms, each designed with comfort in mind. An exclusive Guest Suite with its own ensuite and walk-in robe adds further luxury and versatility.

Rear Balcony —A Moment of Calm

Step out onto the rear balcony and the lake presents itself once more - calm, reflective and timeless. From morning coffee to sunset views, this balcony becomes one of the home's most cherished spaces. It is a private escape where you can breathe, slow down, and feel the beauty of your surroundings.

A HOME BUILT FOR TODAY. A LEGACY FOR TOMORROW.

This residence stands as a rare offering: a home designed for connection, independence and generational harmony. With master suites on both levels, multiple living zones, dual kitchens and thoughtful separation, it welcomes large families, extended families and evolving families with ease.

Luxury is expressed not in excess, but in intentional design. Finesse is felt in every space, every line, every room. And the lake - always present - adds a sense of serenity that elevates daily living.

Property Features:

6 Bedrooms

5 Bathrooms (plus powder rooms)

Multiple Living Zones

3 Full Kitchens + 2 Sculleries

Home Office

Rear and front balcony

Land Size: Approx. 666 m²

Location: Torwood Avenue, Treeby —elevated position overlooking the lake

The furniture package is available separately (Negotiable)

Approx Water Rate: \$1,767.63

Approx Shire Rate: \$3,700.00

Disclaimer: All information contained therein is gathered from relevant third parties sources. We cannot guarantee or give any warranty about the information provided. Interested parties must rely solely on their own enquiries.

MORE DETAILS

Property ID 9CHHA2
Property Type House
Land Area 666 m2
Including Toilets (6)
Balcony
Remote Garage
Kitchenette

Sajad Ahmadyar 0405 602 210

Sales Representative | saj.ahmadyar@ljhooker.com.au

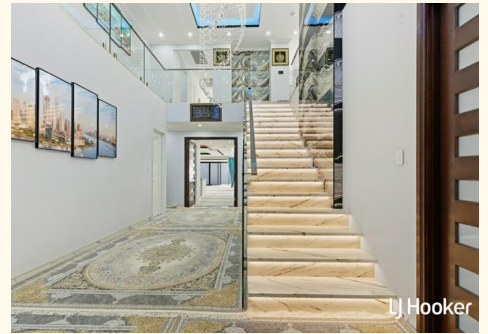
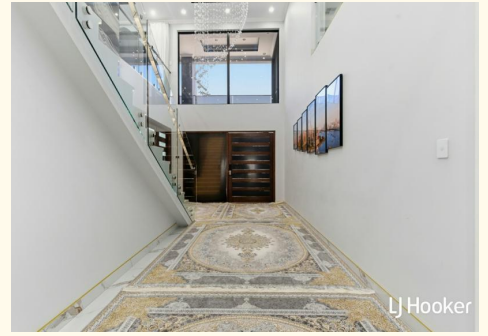
Amir Ahmadyar 0469 375 873

Sales Representative | amir.ahmadyar@ljhooker.com.au

LJ Hooker Thornlie | Canning Vale (08) 9459 7788

Shop 26 Thornlie Square Shopping Centre, Spencer Road,
THORNIE WA 6108

thornlie.ljhooker.com.au | thornlie@ljhooker.com.au



All information contained therein is gathered from relevant third parties sources.
We cannot guarantee or give any warranty about the information provided.
Interested parties must rely solely on their own enquiries.

454 TORWOOD AVENUE, TREEBY



GROUND FLOOR	
LIVING	: 287.89M
GARAGE	: 46.38M
ALFRESCO	: 25.16M
PORCH	: 7.30M
366.73M	
UPPER FLOOR	
LIVING	: 314.62M
BALCONY 2	: 23.16M
BALCONY	: 19.84M
724.35M	

All information contained therein is gathered from relevant third parties sources.
 We cannot guarantee or give any warranty about the information provided.
 Interested parties must rely solely on their own enquiries.