



Torrington, 24-26 Charlton Pinch Road

Four Bedroom Brick & Tile on 5433m²

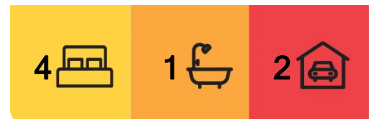
Sitting on the edge of the Toowoomba City boundary placing you 10 to 15 minutes from the heart of this thriving City. Good size bedrooms (main opens to the Northerly Verandah) renovated kitchen and more recently bathroom. Sunken lounge with combustion heater and small dining area.

The house property is set back in a wonderfully elevated position making sure that your views to the North are exceptional.

The block has enormous potential with little being done to make improvements over the years and simply clearing back to the boundaries will instantly add value.

The property is begging for someone to come and love her, lift the presentation use the larger block and enjoy the location with stunning outlook.

Call today for immediate Viewing.



For Sale
\$625,000

View
ljhooker.com.au/1YR8F4W

Contact
Michael Hosking
0418 718 062
mhosking@ljht.com.au



Disclaimer: All information contained therein is gathered from relevant third parties sources. We cannot guarantee or give any warranty about the information provided. Interested parties must rely solely on their own enquiries.

LJ Hooker Toowoomba
(07) 4688 2222

More About this Property

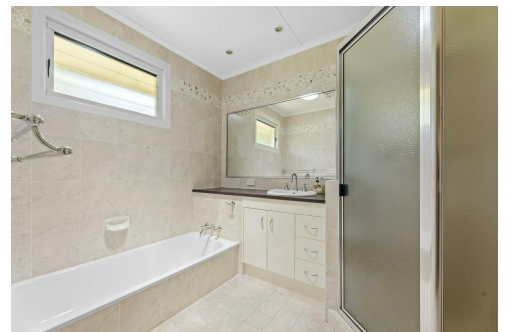
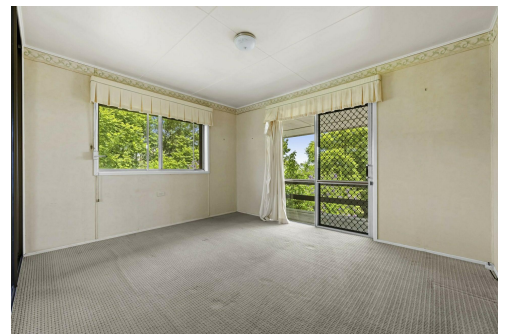
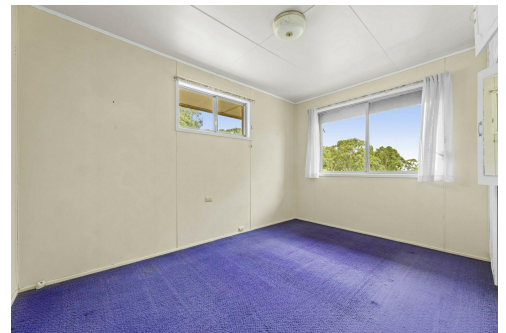
Property ID	1YR8F4W
Property Type	House
Land Area	5433 m2

Michael Hosking 0418 718 062

Residential Sales Executive & Auctioneer | mhosking@ljht.com.au

LJ Hooker Toowoomba (07) 4688 2222

Level 1, 677-683 Ruthven Street, TOOWOOMBA QLD 4350
toowoomba.ljhooker.com.au | toowoomba@ljht.com.au



LJ Hooker Toowoomba
(07) 4688 2222

Disclaimer: All information contained therein is gathered from relevant third parties sources. We cannot guarantee or give any warranty about the information provided. Interested parties must rely solely on their own enquiries.




 Total: 146m²

24/26 Charlton Pinch Road  **LJ Hooker**
 Torrington

This plan is for representational purposes only. All dimensions are approximate and shouldn't be solely relied upon.
 Floorplan created by **Vue Digital**.