

1/108 Beasley Street, Torrens

Brilliant Design

Have you been searching without success, well maybe you have been looking in the wrong places. On offer is a brand-new architecturally designed townhouse with striking street appeal offering a thoughtfully planned layout.

It is designed around offering separate formal and informal living spaces, a modern well appointed kitchen and a main bedroom located on the ground floor, the layout is ideal for those looking to downsize of a family seeking a stylish, low-maintenance lifestyle.


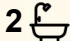
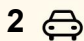
Designed around adaptable housing principles, the floor plan caters to both current and future needs. The northerly aspect of the kitchen and informal living area ensures abundant natural light and energy efficiency, these being the hallmarks of professional design.

This property offers the following:
Ground Floor:

- Master bedroom with ensuite
- Two separate living areas
- Designer kitchen
- Internal access from the double garage
- Seamless indoor-outdoor access to the alfresco entertaining area

Upstairs:

All information contained therein is gathered from relevant third parties sources. We cannot guarantee or give any warranty about the information provided. Interested parties must rely solely on their own enquiries.

4  2  2 

FOR SALE
\$1,300,000

VIEW
By Appointment

AGENTS
Robert Murphy
0414 734 185
rmurphy@ljhbelconnen.com.au

AGENCY
LJ Hooker Belconnen
(02) 6251 1477

 **LJ Hooker**

- Three additional bedrooms (each with built-in robes)
- Main bathroom and separate toilet
- Study nook at the top of the stairs

Located in the highly desirable suburb of Torrens, this townhouse is directly across the road from the local shopping centre - a distinctive precinct originally designed by renowned architect Dirk Bolt the centre offers both charm and convenience. But within a short 5-minute drive you have excellent schools, parks, and the Southlands Shopping Centre, all supporting a truly connected modern lifestyle.

Don't miss your opportunity to secure this exceptional home.

Contact me today to arrange a private viewing or attend one of our open homes - and see for yourself if this could be the dream home you've been looking for.

Essential Data:

- Rates: \$2,993 p.a.
- Body Corp Fees: \$3,349 p.a.
- Land Tax: \$4,176 p.a. (investors only)
- Land Value: \$734,000
- EER: 6.0
- nbn: Fibre to the Node (FTTN)
- Living area: Approx: 146 sqm
- Double Garage: Approx: 36 sqm

Disclaimer:

All information contained herein is gathered from external sources we consider to be reliable. However, we cannot guarantee or give any warranty about the information provided. Interested parties must solely rely on their own enquiries and satisfy themselves in all respects.

MORE DETAILS

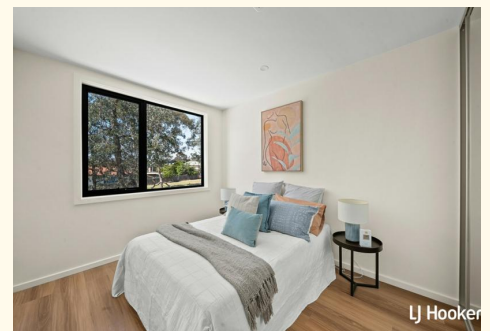
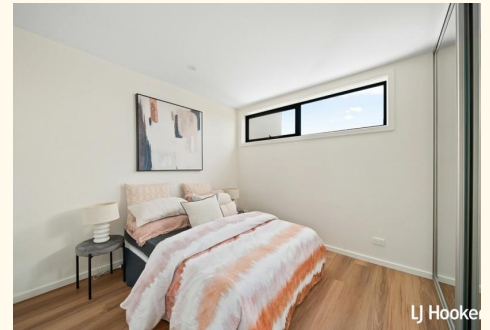
Property ID	HP0BVF8H
Property Type	Townhouse
House Size	146 m2
EER	6
Including	Ducted Cooling Ducted Heating Floorboards Built-in-Robes Fully Fenced

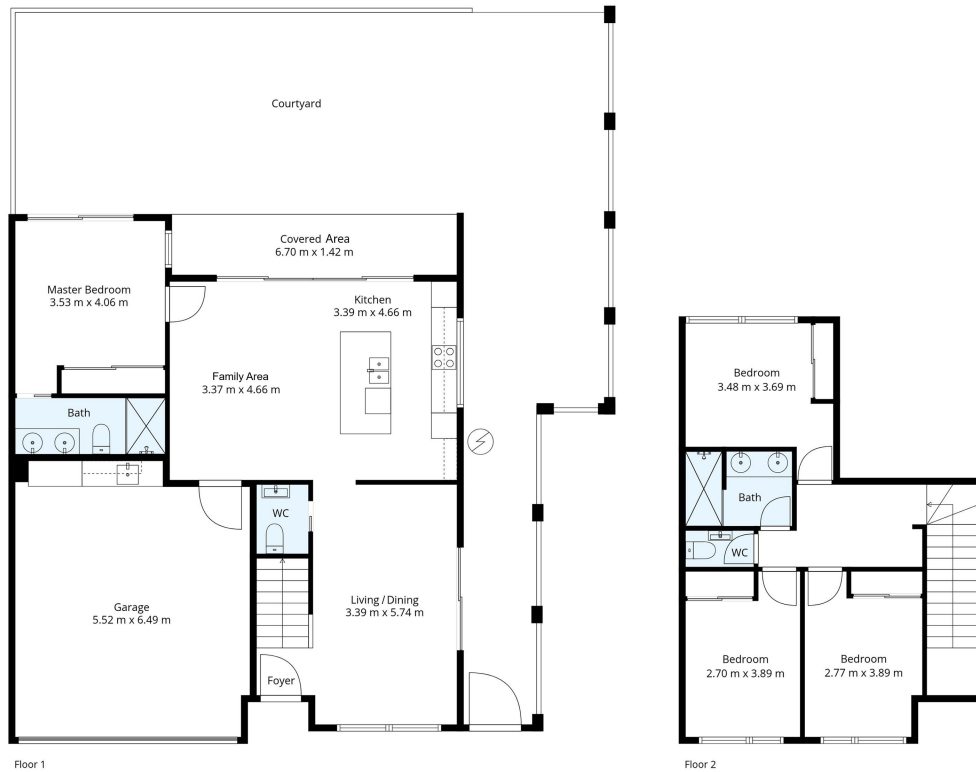
Robert Murphy 0414 734 185

Sales Agent | rmurphy@ljhbelconnen.com.au

LJ Hooker Belconnen (02) 6251 1477

Shop 9, 21 Benjamin Way, BELCONNEN ACT 2617
belconnen.ljhooker.com.au | belconnen@ljhbelconnen.com.au





Floor 1

Floor 2



108 Beasley Street, Torrens

Disclaimer: Plans are indicative only and should be checked by the prospective purchaser. Plans shown are for presentation purposes and are not part of any legal document. All measurements and figures are approximate. The information herein is gathered from sources we believe to be reliable.