



2/22 Brighton Avenue, Toronto


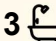
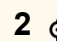
SPECTACULAR AND DIFFERENT!

Big Lake Views and Summer friendly northeast aspect. Developers own free-standing townhouse that boasts oversized Living areas, Huge entertaining deck space and private courtyard. A short stroll to Toronto café precinct and very close to lake access. A rare opportunity to "live large" in a low maintenance private town house with high-end finishings and inclusions.

- Expansive lake views.
- Spacious main bedroom with walk in robe and stunning ensuite with access to entertaining deck.
- Two more large bedrooms with built-ins.
- Designer kitchen stone bench tops and quality appliances.
- Full width covered entertaining deck.
- Duct R/A A/C throughout.
- Attached Double Garage.
- 3 quality bathrooms.

The information contained herein has been provided by people we believe to be reliable, however all interested parties must rely on their own enquiries.

All information contained therein is gathered from relevant third parties sources. We cannot guarantee or give any warranty about the information provided. Interested parties must rely solely on their own enquiries.

3  3  2 

FOR SALE
CONTACT AGENT

AGENTS

Paul Campbell
0417 678 593
paul.campbell@ljhooker.com.au

David Magin
0412 685 917
david.magin@ljhooker.com.au

AGENCY

LJ Hooker Lake Macquarie
(02) 4915 3800

 **LJ Hooker**

MORE DETAILS

Property ID Z8VF7Q
Property Type Townhouse
Including Toilets (3)

Paul Campbell 0417 678 593

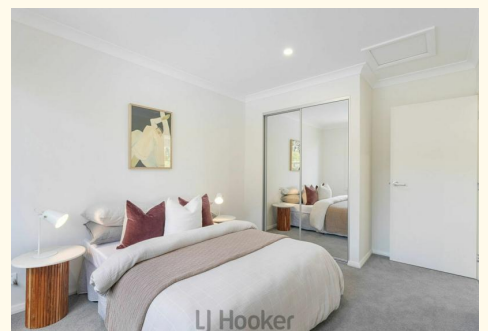
Chairman of the Board | paul.campbell@ljhooker.com.au

David Magin 0412 685 917

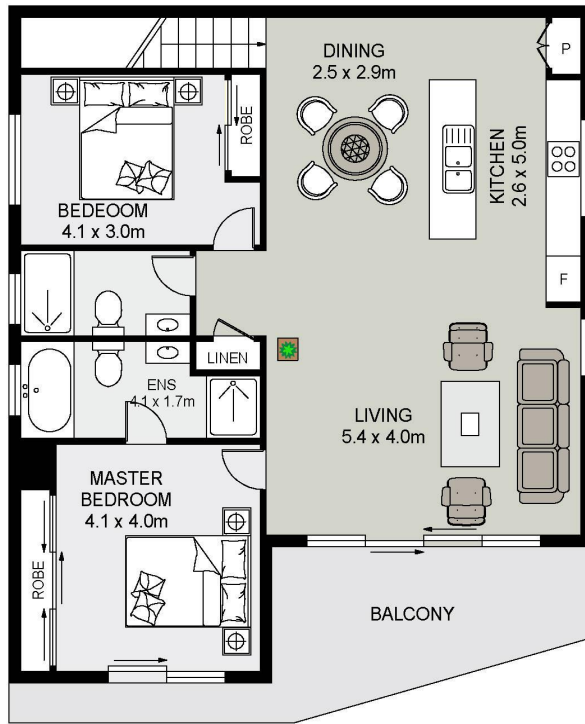
Senior Sales Executive | david.magin@ljhooker.com.au

LJ Hooker Lake Macquarie (02) 4915 3800

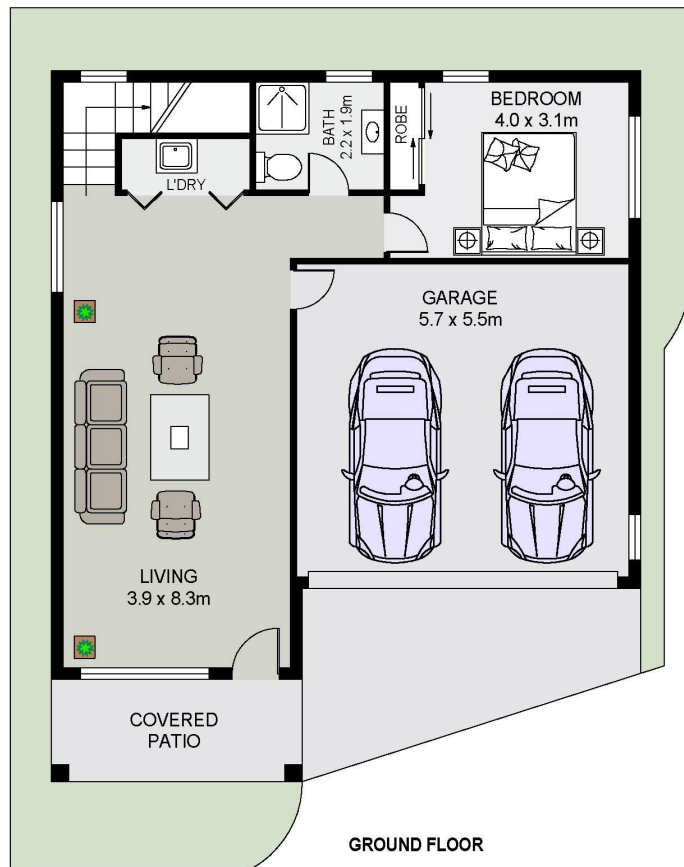
Shop 12, 240-260 Hillsborough Road, WARNERS BAY NSW 2282
lakemacquarie.ljhooker.com.au | warnersbay@ljhooker.com.au



All information contained therein is gathered from relevant third parties sources.
We cannot guarantee or give any warranty about the information provided.
Interested parties must rely solely on their own enquiries.



FIRST FLOOR



GROUND FLOOR



2/22 Brighton Avenue
Toronto



Total Internal Floor Area: 196 sqm

Scale in metres. Indicative only. Dimensions are approximate. All information contained herein is gathered from sources we believe to be reliable. However we cannot guarantee its accuracy and interested persons should rely on their own enquiries



All information contained therein is gathered from relevant third parties sources. We cannot guarantee or give any warranty about the information provided. Interested parties must rely solely on their own enquiries.

