

## Toowoomba City, 611/532-542 Ruthven Street

Prime Investment Opportunity: Stunning Adjoining Units in Central Plaza Toowoomba

Discover the embodiment of modern urban living with this exceptional opportunity nestled within Central Plaza, Toowoomba's premier residential complex. Located on the coveted 6th level, with sweeping views of Toowoomba City and the historical town clock.

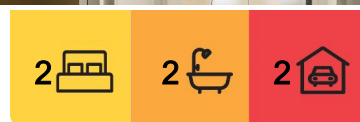
These two adjoining units boast an abundance of natural light and impeccable presentation.

Each unit features its own well-appointed kitchen and full bathroom, seamlessly blending form and function to cater to the discerning resident. The open-plan layout enhances the sense of space and versatility, while large windows frame picturesque views of the surrounding cityscape, creating an ambiance of serenity and tranquillity.

Central Plaza sets the standard for luxury living, offering an array of exclusive amenities for



**Disclaimer:** All information contained therein is gathered from relevant third parties sources. We cannot guarantee or give any warranty about the information provided. Interested parties must rely solely on their own enquiries.



**For Sale**  
\$530,000

**View**  
[ljhooker.com.au/1Y20F4W](http://ljhooker.com.au/1Y20F4W)

**Contact**  
**Naomi Whitaker**  
0499 201 995  
[nwhitaker@ljht.com.au](mailto:nwhitaker@ljht.com.au)

**LJ Hooker Toowoomba**  
**(07) 4688 2222**

residents to enjoy. From secure car accommodation to a resort-style pool and BBQ area, every detail has been carefully curated to elevate the living experience. Fitness enthusiasts will appreciate the state-of-the-art gym facilities, while professionals will find the on-site meeting rooms ideal for business endeavours.

If you're seeking a lucrative investment opportunity these adjoining units in Central Plaza Toowoomba offer the perfect blend of style, convenience, and luxury. Don't miss your chance to secure your place in this prestigious address —inquire via Naomi Whitaker on 0499 201 995 today, to arrange a private inspection and experience the epitome of contemporary living firsthand.

## More About this Property

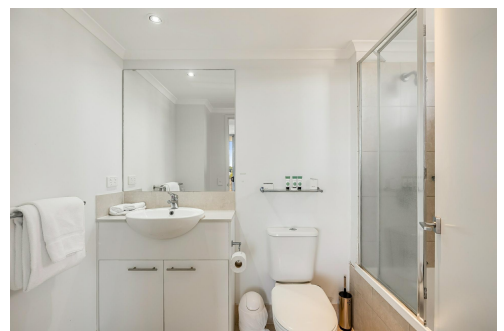
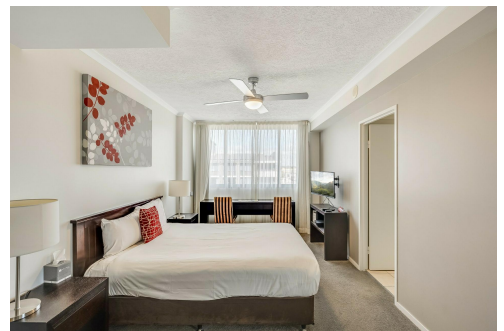
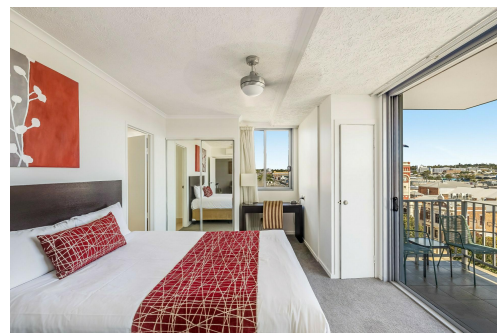
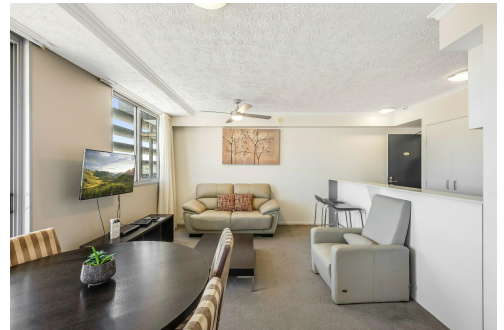
Property ID	1Y20F4W
Property Type	Unit
Land Area	95 m <sup>2</sup>

**Naomi Whitaker 0499 201 995**

Residential Sales Executive | [nwhitaker@ljht.com.au](mailto:nwhitaker@ljht.com.au)

**LJ Hooker Toowoomba (07) 4688 2222**

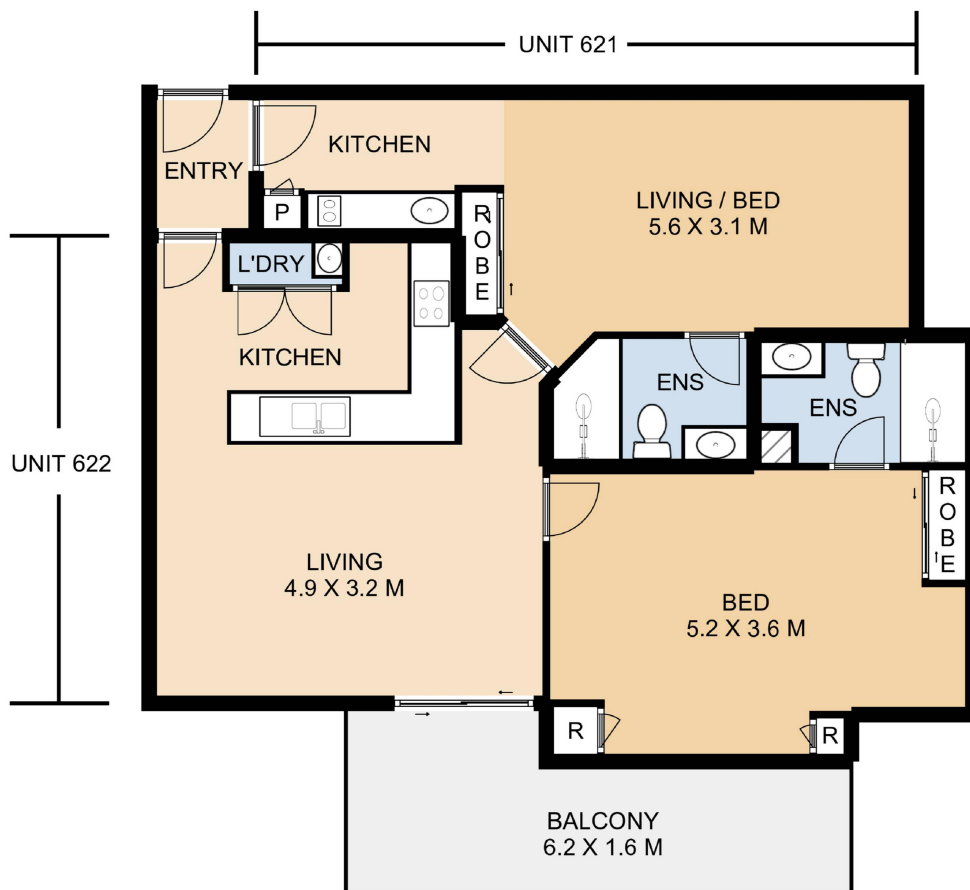
Level 1, 677-683 Ruthven Street, TOOWOOMBA QLD 4350  
[toowoomba.ljhooker.com.au](http://toowoomba.ljhooker.com.au) | [toowoomba@ljht.com.au](mailto:toowoomba@ljht.com.au)



**Disclaimer:** All information contained therein is gathered from relevant third parties sources. We cannot guarantee or give any warranty about the information provided. Interested parties must rely solely on their own enquiries.

**LJ Hooker Toowoomba  
(07) 4688 2222**





## LJ Hooker Unit 621+622, Central Plaza

This plan is for representational purposes only. All dimensions displayed are approximate and shouldn't be solely relied upon.  
Do not edit, reproduce, copy, modify, crop or in any way exploit copyright to Statik Illusions. More info : [statikillusions.com/usage-rights/](http://statikillusions.com/usage-rights/)

Internal 93m<sup>2</sup> External 12m<sup>2</sup> Total 105m<sup>2</sup>

