

Toogoolawah, 65 Dingyarra Street

The Project - UNDER CONTRACT

If you are seeking a project, then this is the property for you.

Older post war home set on 875m² parcel of land with full town services.

The home consists of country style kitchen, dining room flowing to lounge room. Two bedrooms, one with built in robes, bathroom with shower over bath and toilet.

Laundry and second toilet are located separate to house.

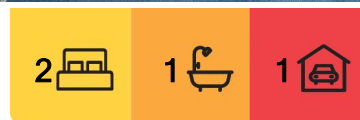
Single carport, great size yard. Walk to Brisbane Valley rail trail and town centre.

Advertising Disclaimer

LJ Hooker Esk | Toogoolawah, its directors, agents, employees, officers and those otherwise associated with maintaining, updating and preparing information on this website



Disclaimer: All information contained therein is gathered from relevant third parties sources. We cannot guarantee or give any warranty about the information provided. Interested parties must rely solely on their own enquiries.



For Sale
Please Call

View
ljhooker.com.au/996HES

Contact
Helen Gauld
0417 782 673
helen.esk@ljhooker.com.au

LJ Hooker Esk | Toogoolawah
(07) 5424 2222

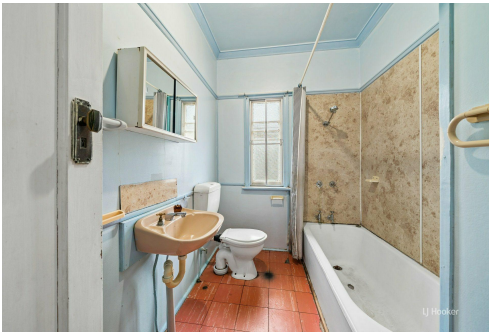
have used our best endeavours to ensure that the information contained herein is true and accurate, but accept no responsibility and disclaim all liability in respect of any errors, omissions, inaccuracies or misstatements that may occur. Prospective purchasers should make their own enquiries to verify the information contained herein.

More About this Property

Property ID	996HES
Property Type	House
Land Area	875 m²
Including	Toilets (1)

Helen Gauld 0417 782 673
Principal | Sales | helen.esk@ljhooker.com.au

LJ Hooker Esk | Toogoolawah (07) 5424 2222
221 Ipswich Street, ESK QLD 4312
esk.ljhooker.com.au | esk@ljhooker.com.au



Disclaimer: All information contained therein is gathered from relevant third parties sources. We cannot guarantee or give any warranty about the information provided. Interested parties must rely solely on their own enquiries.

LJ Hooker Esk | Toogoolawah
(07) 5424 2222