



Tolga, 12 Barlow Close

Fantastic Position | Modern Open Plan Home

Welcome to this move-in ready, open-plan home, perfectly positioned in a peaceful cul-de-sac. Just a short walk to Tolga's main street and only a 5-minute drive to Atherton, this home offers both convenience and tranquillity. Set on a fully fenced, low-maintenance block with side access for added ease.

Included Features:

- *Master Bedroom with En-Suite + Walk in Robe + Air-Conditioning
- *Built in Robes in each Bedroom
- *Bathtub + Walk in Shower in Main Bathroom
- *Security Screens on all Windows
- *Tiled Floors (Carpeted Bedrooms)
- *Double Bay Lockup Garage
- *Laundry in Garage
- *Private back Patio Area



Disclaimer: All information contained therein is gathered from relevant third parties sources. We cannot guarantee or give any warranty about the information provided. Interested parties must rely solely on their own enquiries.

4

2

2

For Sale

Offers Over \$600,000

View

ljhooker.com.au/RV6F1S

Contact

Joson Curcio

0439 948 999

joson@ljhatherton.com

LJ Hooker Atherton
(07) 4091 3144

*Electric Oven + Cooktop + Dishwasher in Kitchen

*Open Plan Living Area with Air-Conditioning

*Fully Fenced Yard

*Side Access for a Vehicle

Don't miss out on this fantastic opportunity contact Exclusively Listed Agent Joson Curcio today on 0439 948 999.

More About this Property

Property ID	RV6F1S
Property Type	House
House Size	138 m ²
Land Area	600 m ²
Including	Air Conditioning Dishwasher Built-in-Robes Fully Fenced Remote Garage

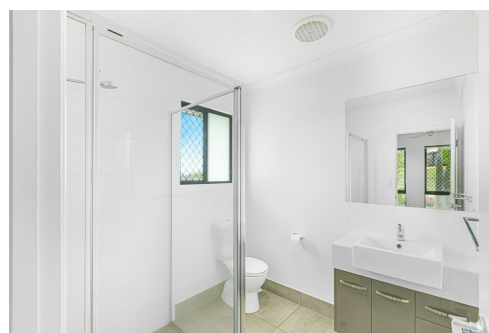
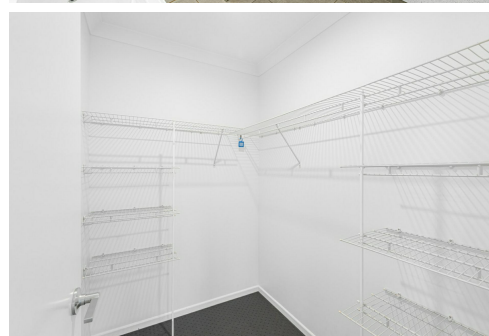
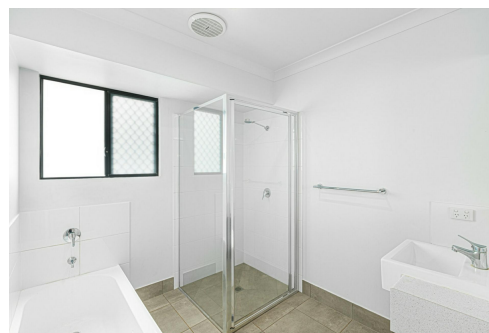
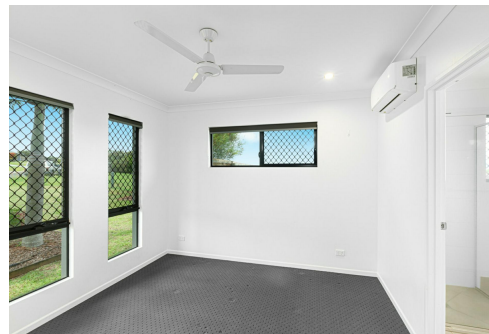
Joson Curcio 0439 948 999

Property Sales Consultant | joson@ljhatherton.com

LJ Hooker Atherton (07) 4091 3144

10 Main Street, ATHERTON QLD 4883

atherton.ljhooker.com.au | atherton@ljhatherton.com



Disclaimer: All information contained therein is gathered from relevant third parties sources.
We cannot guarantee or give any warranty about the information provided. Interested parties must rely solely on their own enquiries.

**LJ Hooker Atherton
(07) 4091 3144**



TOTAL: 126 m²

FLOOR 1: 126 m²

EXCLUDED AREAS: GARAGE W/ LAUNDRY: 36 m², PORCH: 2 m², COVERED PATIO: 19 m²

FLOOR PLAN CREATED BY CUBICASA APP. MEASUREMENTS DEEMED HIGHLY RELIABLE BUT NOT GUARANTEED.

LJ Hooker