

9-11 Lakeside Drive, Tinaroo

Privacy | Lake Tinaroo | Brick

Tucked away in one of Lake Tinaroo's most peaceful pockets, this solid brick-over-block residence offers complete serenity; established trees frame the landscape; wallabies graze in the yard; and birdsong can be heard throughout the day. With the Tinaroo Sailing Club just three minutes drive away and a private pedestrian gate providing easy access to the lake's shoreline, this is the ultimate Tablelands retreat.

Inside you're welcomed by a generous open-plan living and dining area, centred around a cosy fireplace that warms the entire home through the cooler months. The kitchen offers excellent storage, plenty of bench space and a charming rustic brick arch that frames the breakfast bar—classic character combined with functionality.

Each bedroom opens directly to the wrap-around concrete veranda, offering breezy airflow and a seamless indoor—outdoor lifestyle. The master suite features a large built-in robe and private ensuite with walk in shower, making it a comfortable and practical space.

Cleverly designed below on the lower level, you'll find a fully equipped workshop with toilet and sink, lock up vehicle accommodation, and additional under-house storage area—ideal for a cellar or simply keeping everything tidy.

3 2 3

FOR SALE
Under Offer

AGENTS

Alex Payne
0409 328 153
alex@ljhookerpropertyplus.com

AGENCY

LJ Hooker Atherton
(07) 4091 3144

All information contained therein is gathered from relevant third parties sources.
We cannot guarantee or give any warranty about the information provided.
Interested parties must rely solely on their own enquiries.

LJ Hooker

The property is fully fenced and boasts several stone retaining wall. Additional block-constructed boat shed with 3m clearance-perfect for storing the big toys and ensuring security.

Whether you're chasing a weekender or a full-time residence, this property delivers privacy, space and proximity to Lake Tinaroo. Contact exclusive agent Alex Payne today on 0409 328 153.

MORE DETAILS

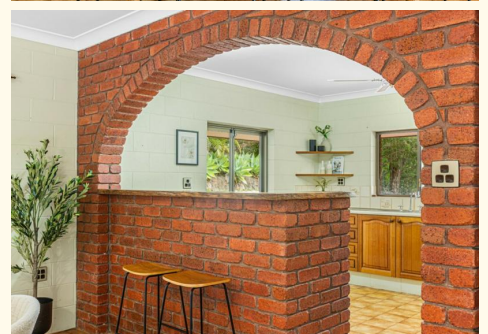
Property ID	SBZF1S
Property Type	House
House Size	181 m2
Land Area	7316 m2
Including	Toilets (3) Courtyard Deck Built-in-Robes Secure Parking Fully Fenced Liveability

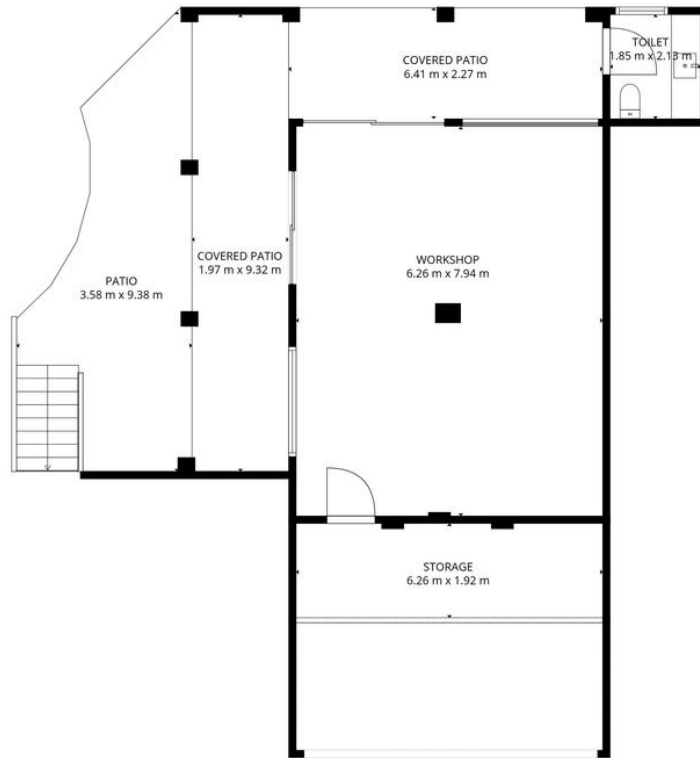
Alex Payne 0409 328 153

Property Sales Consultant | alex@ljhookerpropertyplus.com

LJ Hooker Atherton (07) 4091 3144

10 Main Street, ATHERTON QLD 4883
atherton.ljhooker.com.au | atherton@ljhatherton.com





TOTAL: 181 m²

1st floor: 0 m², 2nd floor: 181 m²

EXCLUDED AREAS: WORKSHOP: 50 m², HALF BATH: 4 m², LOW CEILING: 16 m²,
 STORAGE: 13 m², COVERED PATIO: 162 m², PATIO: 82 m²,
 PORCH: 35 m², CARPORT: 30 m², WALLS: 19 m²

FLOOR PLAN CREATED BY CUBICASA APP. MEASUREMENTS DEEMED HIGHLY RELIABLE BUT NOT GUARANTEED.

