



515 Doake Road, Timaru

## A rural oasis for lifestyle seekers

Built in 2020 and set on 1.2 hectares in Levels Valley, this property offers the perfect blend of contemporary comfort and peaceful rural charm. Surrounded by beautiful natural greenery and sweeping countryside views, it's a home where every day feels like an escape.

Step inside to a light-filled open-plan kitchen, dining, and living area designed for living and entertaining. The seamless flow to the outdoors makes it easy to enjoy your surroundings year-round. The home features four well-appointed bedrooms, including a spacious master with an ensuite and complete with a walk-in wardrobe. Another stylish bathroom and a third toilet provide convenience for busy households, while a double garage with an attached beautiful office space with it's own electric fireplace, adds practicality and secure storage.

Modern, inviting, and set in an idyllic location, this truly is a lifestyle property not to be missed. Come experience the tranquility and discover the possibilities of living here.

### Features:

- Four bedrooms
- Two bathrooms
- Three toilets

4  2  2 

### FOR SALE

Enquiries Over \$949,000

### VIEW

By Appointment

### AGENTS

Ben Groundwater  
027 415 6405  
ben@ljhtimaru.co.nz

Joelle Snook  
027 844 5432  
joelle@ljhtimaru.co.nz

### AGENCY

LJ Hooker Timaru  
(03) 688 3029  
Enting Real Estate Limited

All information contained therein is gathered from relevant third parties sources. We cannot guarantee or give any warranty about the information provided. Interested parties must rely solely on their own enquiries.



- Open-plan living
- Wood fire
- Two electric fireplaces
- Double glazed
- Rural views

**Disclaimer:**

This information has been supplied by the owners and Corelogic. LJ Hooker Timaru, Geraldine and Waimate are merely passing over this information as supplied to us. We cannot guarantee its accuracy and reliability as we have not checked, audited or reviewed the information. All intending purchasers are advised to conduct their own due diligence investigation into this information. To the maximum extent permitted by law, we do not accept any responsibility to any part for the accuracy or use of the information herein. Enting Real Estate Limited Licensed (REAA 2008).

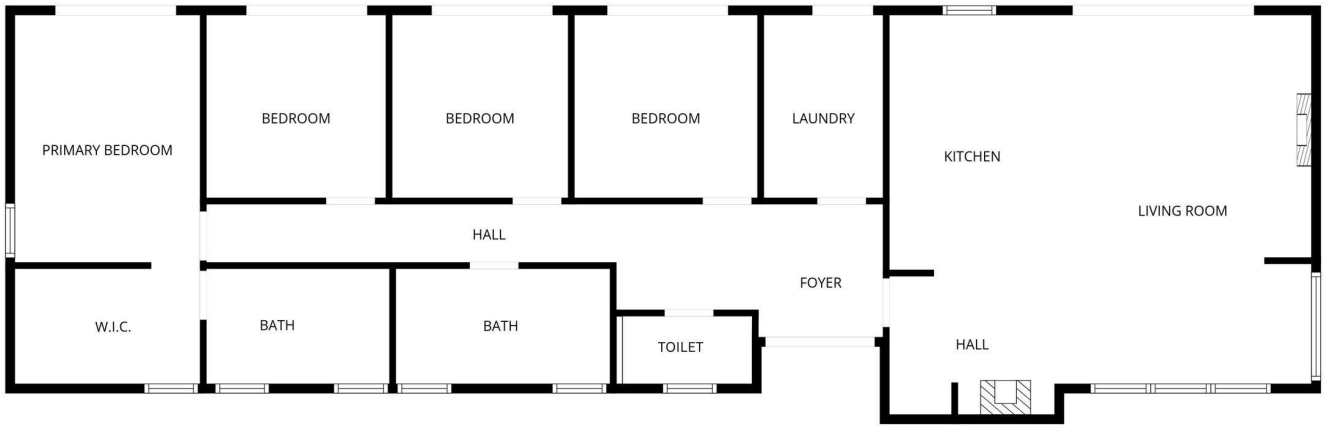
**MORE DETAILS**

Property ID                    15S3GTA  
 Property Type                Lifestyle  
 House Size                    135 m2  
 Land Area                     1.2 hectare  
**Licensed Real Estate Agents (REAA2008)**

**Ben Groundwater 027 415 6405**  
 Property Consultant | [ben@ljhtimaru.co.nz](mailto:ben@ljhtimaru.co.nz)  
**Joelle Snook 027 844 5432**  
 Property Consultant | [joelle@ljhtimaru.co.nz](mailto:joelle@ljhtimaru.co.nz)

**LJ Hooker Timaru (03) 688 3029**  
 Enting Real Estate Limited  
 51 Church Street, TIMARU 7910  
[timaru.ljhooker.co.nz](http://timaru.ljhooker.co.nz) | [timaru@ljhooker.co.nz](mailto:timaru@ljhooker.co.nz)





All information contained therein is gathered from relevant third parties sources.  
We cannot guarantee or give any warranty about the information provided.  
Interested parties must rely solely on their own enquiries.