

Thornlie, 104 Partridge Way

Cozy place to call home

3 1 0

Calling all Investors, Renovators, or anyone ready for a challenge! This property is bursting with potential. Situated on a spacious 714sqm block, directly opposite Partridge Way Reserve and near the Tom Bateman Sporting Complex Reserve, this home is being sold AS IS. This presents a fantastic opportunity for the buyer willing to invest effort into restoring this property to its former glory.

Features:

Lounge
Kitchen/Dining
3 Bedrooms
1 Bathroom
Large Backyard
Small Shed
Land: approx 714sqm

For Sale
Please Call

View
ljhooker.com.au/85SHA2

Contact
Veronica Hadfield
0450 278 008
veronica.hadfield@ljhooker.com.au

Nathan Frisina
0431 714 375
nathan.frisina@ljhooker.com.au



Disclaimer: All information contained therein is gathered from relevant third parties sources. We cannot guarantee or give any warranty about the information provided. Interested parties must rely solely on their own enquiries.

LJ Hooker Thornlie | Canning Vale
(08) 9459 7788

Built: approx 1975

Shire Rates: approx \$1,550 pa

Water Rates: approx \$930 pa

Disclaimer: All information contained therein is gathered from relevant third parties sources. We cannot guarantee or give any warranty about the information provided. Interested parties must rely solely on their own enquiries.

More About this Property

Property ID	85SHA2
Property Type	House
Land Area	714 m ²

Veronica Hadfield 0450 278 008

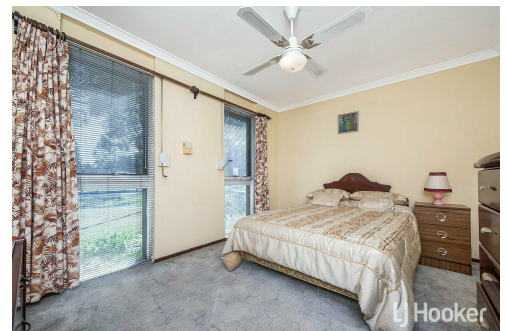
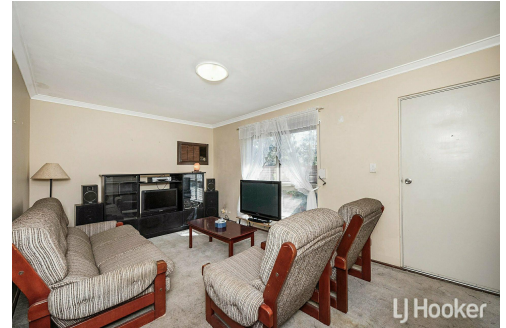
Sales Representative | veronica.hadfield@ljhooker.com.au

Nathan Frisina 0431 714 375

Licensee | Director | nathan.frisina@ljhooker.com.au

LJ Hooker Thornlie | Canning Vale (08) 9459 7788

Shop 26 Thornlie Square Shopping Centre, Spencer Road, THORNIE WA 6108
thornlie.ljhooker.com.au | thornlie@ljhooker.com.au



Disclaimer: All information contained therein is gathered from relevant third parties sources. We cannot guarantee or give any warranty about the information provided. Interested parties must rely solely on their own enquiries.

LJ Hooker Thornlie | Canning Vale
(08) 9459 7788