

Thirlmere, 12 Westbourne Avenue

1009m2 large family home with development opportunity!

Amazing opportunity if you are looking for a large home on a large quarter acre block, with development opportunities created by the direct access to the road at the rear of the property. Overall the property is a large well maintained and presented home (freshly painted throughout) with strong street appeal, located minutes from shops and schools. The home is ideal for a large family, down sizers looking to move from acreage and still have a large yard or the investor looking to create a dual income from one tittle.

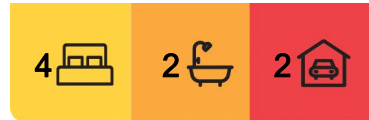
Features include

- The large floor plan offers 4 living areas
- Master bedroom with walk in and ensuite
- Plantation shutters In front rooms
- Double garage with internal access
- Large flued natural gas heater
- Undercover alfresco area off living areas



Disclaimer: All information contained therein is gathered from relevant third parties sources. We cannot guarantee or give any warranty about the information provided. Interested parties must rely solely on their own enquiries.

SOLD



For Sale
\$1,070,000

View
ljhooker.com.au/48MHV8

Contact
Melika McEachern
0401 997 700
melika.mceachern@ljhooker.com.au
Malcolm McEachern
0401 997 700
mal.mceachern@ljhooker.com.au

LJ Hooker Picton
(02) 4677 3441

- Dining area could be a 5th bedroom.
- Side access as well as direct access at rear of property
- Kitchen offers large bench space and abundance of storage
- Generous size bathroom and ensuite

Located in the village country style suburb of Thirlmere, just minutes from the historic township of Picton, Southern to the stunning Southern Highlands or east for a short trip to the stunning beaches of Wollongong.

All development opportunities should be researched by buyers and require council consent
See attached video showing casing the Thirlmere township.

Disclaimer: Whilst every effort is taken to ensure the accuracy of this listing, we accept no responsibility for errors or omissions. We encourage you to seek your own independent legal and/or financial advice prior to making any commitment or decision.

More About this Property

Property ID	48MHV8
Property Type	House
Land Area	1009 m ²

Melika McEachern 0401 997 700

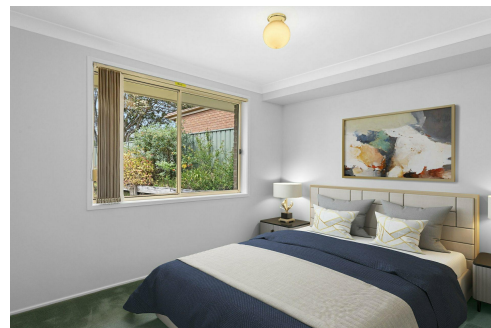
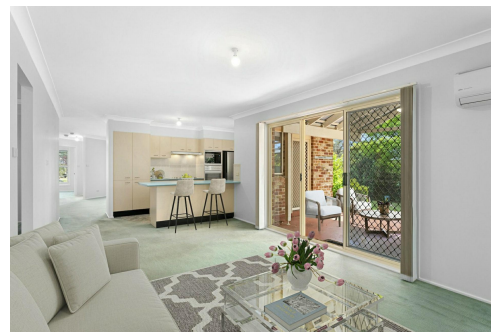
Sales/Director | melika.mceachern@ljhooker.com.au

Malcolm McEachern 0401 997 700

Licensee | mal.mceachern@ljhooker.com.au

LJ Hooker Picton (02) 4677 3441

Suite 20, 150-158 Argyle Street, PICTON NSW 2571
picton.ljhooker.com.au | picton@ljhooker.com.au



LJ Hooker Picton
(02) 4677 3441

Disclaimer: All information contained therein is gathered from relevant third parties sources. We cannot guarantee or give any warranty about the information provided. Interested parties must rely solely on their own enquiries.