

## The Entrance, 12/11-15 Fairview Avenue

SUPERSIZED, SUPER GORGEOUS, SUPER CENTRAL!

This gorgeous immacutely presented and light filled 3 bedroom apartment has to be one of the largest available today, really is Villa style, low maintenance living right in the heart of it all.

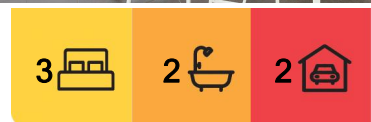
Sprawling over 237sqm you will be delighted stepping inside. Boasting a massive open plan living area flooded in natural light, high ceilings to really enhance the feeling of space, perfect floorplan for capturing the summer breeze and opening outdoors to 2 separate oversize entertaining balconies, ideal to follow the seasons.

Featuring a massive main bedroom with ensuite, BIWs, loads of storage, ducted air-conditioning throughout, beautifully appointed gourmet style kitchen, lock-up double garaging and so much more.

Securely situated on level 3 with lift access in one of the most sought complexes in the



**Disclaimer:** All information contained therein is gathered from relevant third parties sources. We cannot guarantee or give any warranty about the information provided. Interested parties must rely solely on their own enquiries.



**For Sale**  
\$885,000

**View**  
[ljhooker.com.au/17CRF7M](http://ljhooker.com.au/17CRF7M)

**Contact**  
**Scott Bennett**  
0418 419 950  
[sbennett.theentrance@ljhooker.com.au](mailto:sbennett.theentrance@ljhooker.com.au)

**LJ Hooker The Entrance**  
**(02) 4332 2555**

heart of The Entrance, everything is literally at your doorstep, shopping, cafes, pubs, lake, beach, transport and so much more.

This is not just a huge home but a beachside lifestyle on offer.

## More About this Property

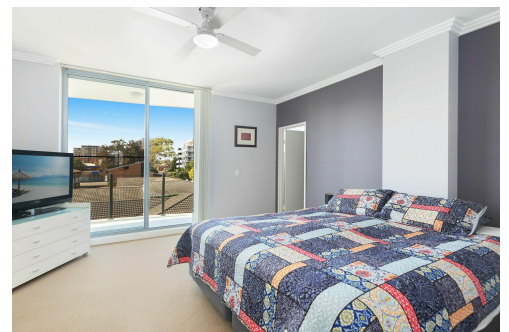
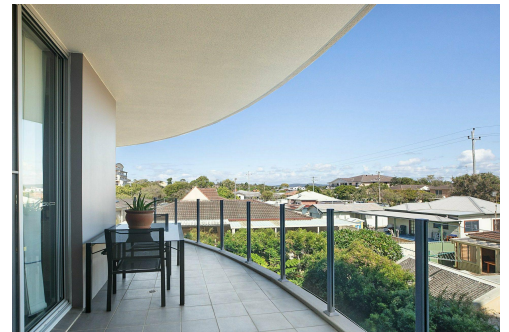
<b>Property ID</b>	17CRF7M
<b>Property Type</b>	Apartment
<b>Including</b>	Ensuite Ducted Cooling Ducted Heating Intercom Balcony Dishwasher Outdoor Entertaining Built-in-Robes Secure Parking

**Scott Bennett 0418 419 950**

Licensee | [sbennett.theentrance@ljhooker.com.au](mailto:sbennett.theentrance@ljhooker.com.au)

**LJ Hooker The Entrance (02) 4332 2555**

213 The Entrance Road, THE ENTRANCE NSW 2261  
[theentrance.ljhooker.com.au](http://theentrance.ljhooker.com.au) | [theentrance@ljhooker.com.au](mailto:theentrance@ljhooker.com.au)



**LJ Hooker The Entrance**  
**(02) 4332 2555**

**Disclaimer:** All information contained therein is gathered from relevant third parties sources. We cannot guarantee or give any warranty about the information provided. Interested parties must rely solely on their own enquiries.