

## The Entrance North, 16 Terilbah Place

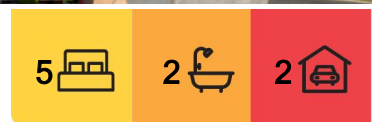
### Stunning Fully Renovated Large Family Home!

This beautiful, fully renovated family home is the perfect blend of luxury, comfort, and convenience.

Situated in an exclusive desirable location, just a short stroll to the pristine beach, serene lake, and the world-class Magenta Shores Golf Club only a short drive, this property offers the ultimate lifestyle and can accommodate a growing family.

Featuring:

- \* Spacious and light-filled living areas, ideal for everyone to have their own space.
- \* High end open planned kitchen with butler's pantry and island bench.
- \* 4 /5 generously sized bedrooms (including oversized master with ensuite)
- \* Fully fitted out laundry plus extra downstairs WC.
- \* Study Nook.



**For Sale**

Price Guide: \$1,650,000

**View**

Sat 3rd May @ 10:00AM - 10:30AM

**Contact**

**Justin Bond**

0406 999 007

justin.bond@ljhooker.com.au

**Belinda Bond**

0400 544 557

belinda.bond@ljhooker.com.au



**Disclaimer:** All information contained therein is gathered from relevant third parties sources.

We cannot guarantee or give any warranty about the information provided. Interested parties must rely solely on their own enquiries.

**LJ Hooker Tumby Umbi | Killarney  
Vale | Bateau Bay  
(02) 4389 1722**



The rear yard is generous and features a spectacular outdoor entertainment area as its centerpiece, featuring a built in BBQ with crazy stone effect, and outdoor plantation shutters and blinds.

Double garage with internal access.

Finished throughout with modern tones and highlights, solar assisted power, engineered flooring, air conditioning, ceiling fans, plantation shutters and attention to detail everywhere you look.

Whether you're enjoying a morning walk along the beach, talking advantage of the newly constructed bike / walking path, or teeing off at the nearby golf course, this home offers an unbeatable location for an active family lifestyle.

Don't miss out on this rare opportunity to own a piece of paradise!

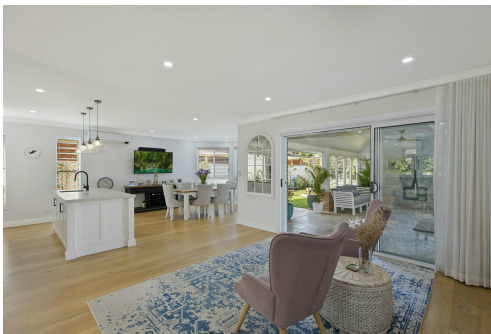
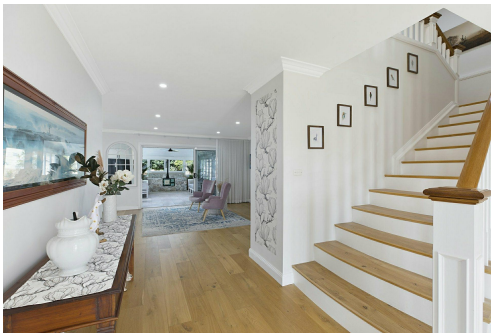
Disclaimer: All information contained herein is gathered from sources we consider to be reliable, however we cannot guarantee or give any warranty about the information provided. All images, border/s, property boundaries and floor plans are indicative of the property and for illustrative purposes only. Any development potential stated herein is suggestive only and may be subject to relevant approvals, as such it is not to be relied upon. All distances and measurements are approximate. Interested parties must solely rely on their own enquiries.

## More About this Property

Property ID	WH6GJF
Property Type	House
Land Area	699.5 m <sup>2</sup>

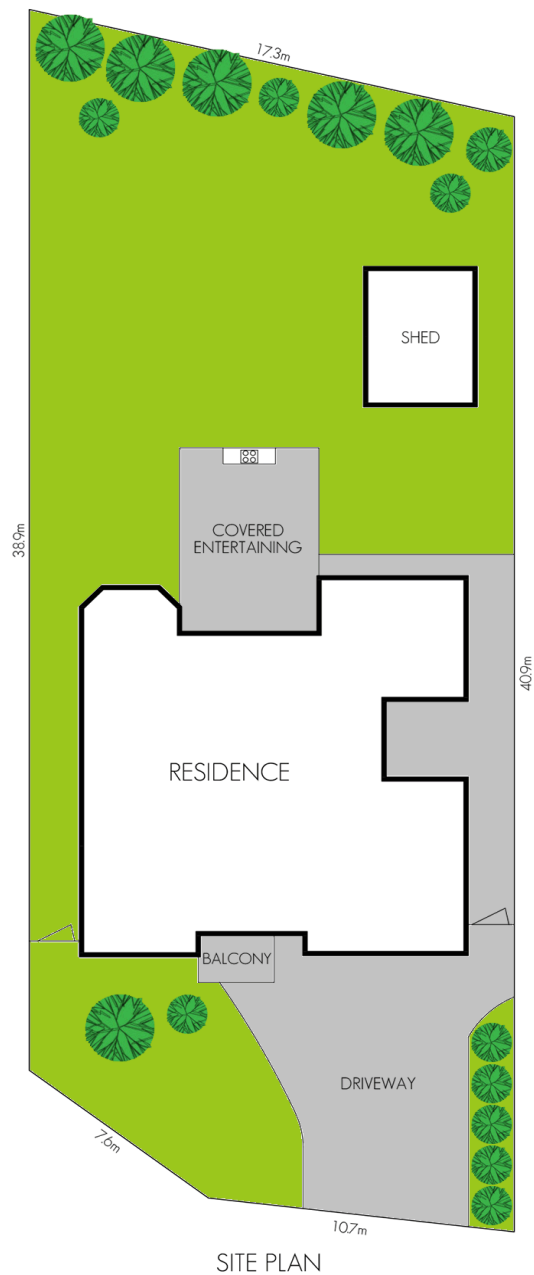
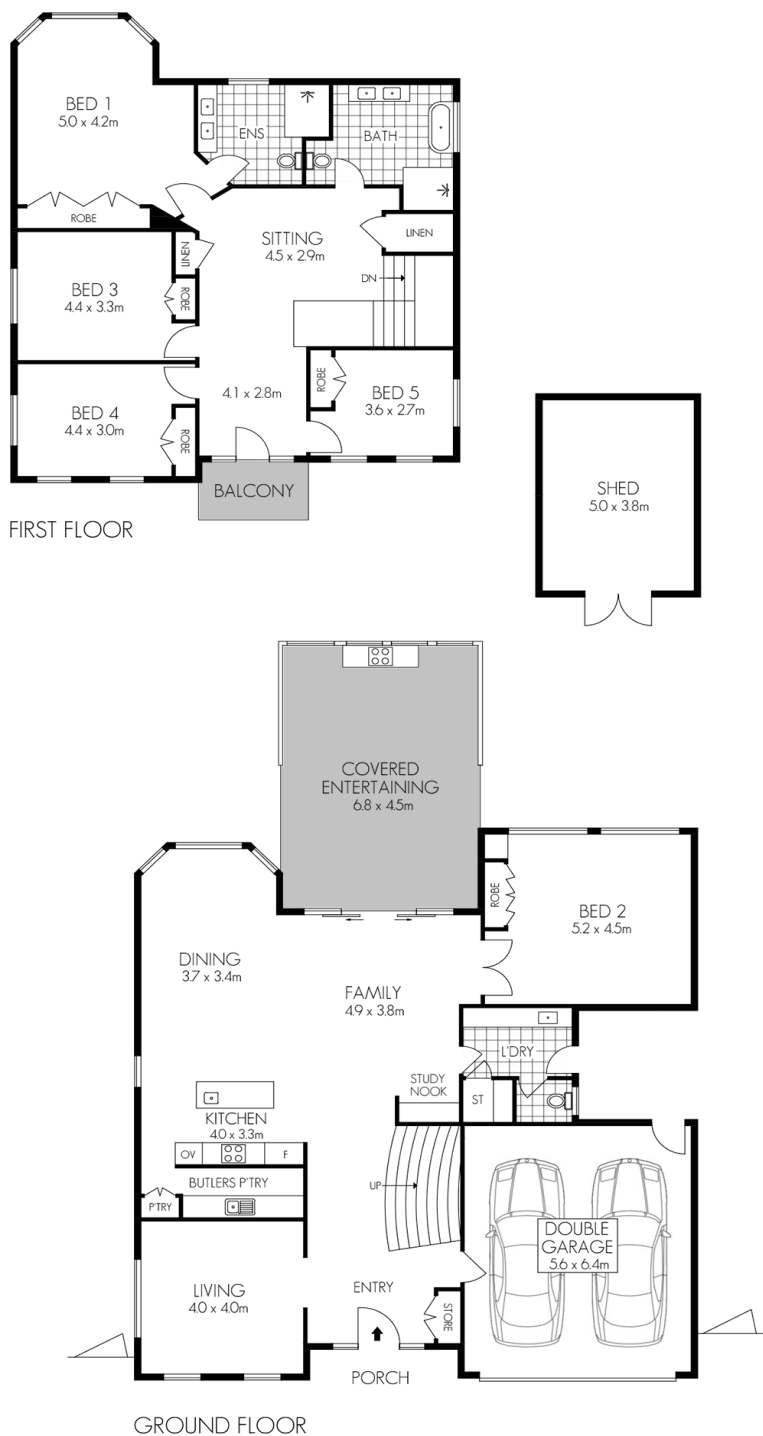
**Justin Bond 0406 999 007**  
Principal - Licensee | [justin.bond@ljhooker.com.au](mailto:justin.bond@ljhooker.com.au)  
**Belinda Bond 0400 544 557**  
Principal - Licensee | [belinda.bond@ljhooker.com.au](mailto:belinda.bond@ljhooker.com.au)

**LJ Hooker Tumby Umbi | Killarney Vale | Bateau Bay (02) 4389 1722**  
Shop 2, 140 Wyong Road, KILLARNEY VALE NSW 2261  
[tumbiumbi.ljhooker.com.au](mailto:tumbiumbi.ljhooker.com.au) | [tumbiumbi@ljhooker.com.au](mailto:tumbiumbi@ljhooker.com.au)



**Disclaimer:** All information contained therein is gathered from relevant third parties sources. We cannot guarantee or give any warranty about the information provided. Interested parties must rely solely on their own enquiries.

**LJ Hooker Tumby Umbi | Killarney  
Vale | Bateau Bay  
(02) 4389 1722**



Approx. internal 286sqm

## 16 Terilbah Place, The Entrance North

Scale in metres. Indicative only. Dimensions are approximate. All information contained herein is gathered from sources we believe to be reliable. However we cannot guarantee its accuracy and interested persons should rely on their own enquiries.



**Disclaimer:** All information contained therein is gathered from relevant third parties sources. We cannot guarantee or give any warranty about the information provided. Interested parties must rely solely on their own enquiries.

**LJ Hooker Tumby Umbi | Killarney  
Vale | Bateau Bay  
(02) 4389 1722**