



Sold



6 Benevis Place, Terranora

SOLD BY GRANT JOHNSON

Located in a quiet leafy cul-de-sac, this charming family residence offers a flexible floorplan and a great opportunity for large/dual family living. This home provides complete privacy and a rural lifestyle retreat with the convenience of coastal living located just minutes to Lindersfarn grammar school, Terranora Pavilions and is less than 20 minutes to local beaches, gold coast airport, shopping precincts, and Motorway access.

- Elegant open-plan flow allows easy family living, with great indoor-outdoor connection
- Fully fenced level garden space provides a safe and usable area for kids or animals to play.
- Charming main living room with woodburning fireplace overlooks private and tranquil front garden
- 1 acre parcel of land complete with established fruit trees/vegetable garden with additional landscaped tropical garden
- Council approved extension features bathroom and kitchenette, great for guests or multi-generational /dual-living potential
- Stylish Kitchen, complete with gas cooking & dishwasher, overlooks private landscaped rear garden
- Quiet cu-de-sac location with minimal traffic creates a safe place for kids to play/ride bikes etc.
- Close proximity to walking tracks, creek great for fishing, crabbing or kayaking, also family friendly dog park

3 3 3

FOR SALE

Price Guide \$1.28m-\$1.35m

AGENTS

Grant Johnson
0426230553
grant@ljhookerct.com.au

AGENCY

LJ Hooker Coolangatta | Tweed
(07) 5536 5577

All information contained therein is gathered from relevant third parties sources. We cannot guarantee or give any warranty about the information provided. Interested parties must rely solely on their own enquiries.



- Generous master suite complete with built-in robe connects seamlessly to the spacious renovated bathroom
- Additional two bedrooms are enormous in size and feature built-in robes
- Additional off-street parking perfect for a caravan, boat or additional vehicles
- Other features include, 6.6kw solar, nbn connectivity, recently updated air conditioning, bespoke garden shed

Disclaimer:

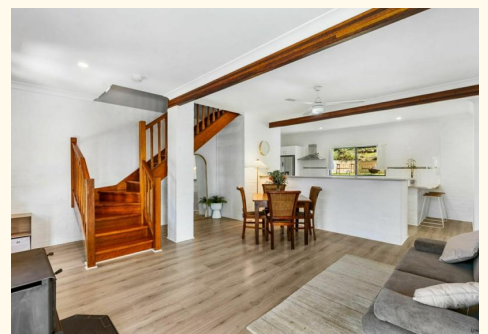
All information (including but not limited to the property area, floor size, price, address and general property description) is provided as a convenience to you, and has been provided to LJ Hooker by third parties. LJ Hooker is unable to definitively confirm whether the information listed is correct or 100% accurate. LJ Hooker does not accept any liability (direct or indirect) for any injury, loss, claim, damage or any incidental or consequential damages, including but not limited to lost profits or savings, arising out of or in any way connected with the use of any information, or any error, omission or defect in the information, contained on the Website. Information contained on the Website should not be relied upon and you should make your own enquiries and seek legal advice in respect of any property on the Website. Prices displayed on the Website are current at the time of issue, but may change.

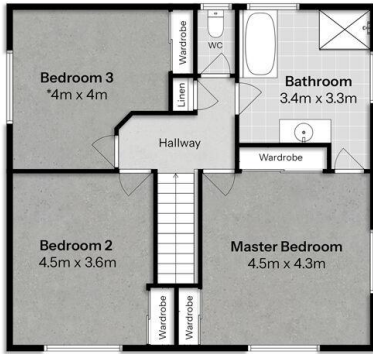
MORE DETAILS

| | |
|---------------|---|
| Property ID | KW4HEZ |
| Property Type | House |
| Land Area | 4332 m2 |
| Including | Air Conditioning Dishwasher Built-in-Robes Fully Fenced Remote Garage Solar Panels |

Grant Johnson 0426230553
Sales & Marketing Specialist | grant@ljhookerct.com.au

LJ Hooker Coolangatta | Tweed (07) 5536 5577
5/100 Griffith Street, COOLANGATTA QLD 4225
coolangattatweed.ljhooker.com.au | enquiries@ljhookerct.com.au





First Floor



Ground Floor

Legend

1. Driveway
2. Single Garage
3. Portico
4. Residence
5. Covered Patio
6. Shade Sail over Patio
7. Shed (2m x 2.9m)
8. In-ground Enviro Septic tank
9. Veggie patch
10. Chicken Coop
11. Firepit



Benevis Place Site Plan



Southern Gold Coast

Grant Johnson
0426 230 553

6 BENEVIS PLACE
Terranora

| | |
|------------------|----------------------|
| Internal, Garage | 223m ² |
| External | 50m ² |
| Total Area | 273m ² |
| Land Area | 4,332 m ² |

-  4
-  3
-  1+ Off-Street

Social Lab

BIANCO
STUDIO

Disclaimer

This floor plan is a detailed representation created to enhance your understanding of the property's potential. While we strive for accuracy, dimensions are approximate and should be verified for complete assurance.

* Denotes Approx. measurements at widest points.
LJ Hooker

All information contained therein is gathered from relevant third parties sources. We cannot guarantee or give any warranty about the information provided. Interested parties must rely solely on their own enquiries.

