



Tenambit, 12 Goldingham Street

PRIME CORNER BLOCK WITH HUGE POTENTIAL!

Positioned on a generous 872sqm corner block, this 3-bedroom home offers incredible potential for first-home buyers, investors, or developers looking to capitalize on the location and land size.

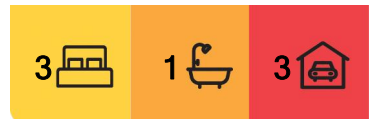
Just 5 minutes from the new Maitland Hospital, Stockland Greenhills, and within close proximity to local schools and shops, this property is all about convenience and opportunity.

The home itself is a blank canvas, ready for a cosmetic refresh to add value. A fresh coat of paint, new carpets, and upgrades to the kitchen and bathroom would transform this space, making it ideal for those wanting to create their dream home or maximize rental returns.

For developers, the dual street frontage (Goldingham St & Byng St) presents an exciting



Disclaimer: All information contained therein is gathered from relevant third parties sources. We cannot guarantee or give any warranty about the information provided. Interested parties must rely solely on their own enquiries.



For Sale
\$700,000

View
ljhooker.com.au/1DZ8F6H

Contact
Kane Bradley
0423 525 335
kbradley.maitland@ljhooker.com.au

Todd Fisher
0438 592 920
tfisher.maitland@ljhooker.com.au

LJ Hooker Maitland
(02) 4933 5511

opportunity. The large block lends itself to future development (STCA), with ample space to retain the existing home while adding another dwelling at the rear.

Additional features include ample shedding, carports, and a studio/workshop attached to the shed-perfect for storage, hobbies, or a home business setup.

Whether you're looking to renovate, invest, or develop, this is an opportunity not to be missed!

Proudly marketed by LJ Hooker Maitland, please call exclusive agent Kane Bradley 0423 525 335 7 days for all inspections & further information.

All information contained herein is gathered from sources we deem to be reliable. However, we cannot guarantee its accuracy and interested persons should rely on their own enquiries.

More About this Property

| | |
|----------------------|---------|
| Property ID | 1DZ8F6H |
| Property Type | House |
| Land Area | 873 m2 |

Kane Bradley 0423 525 335

Director | kbradley.maitland@ljhooker.com.au

Todd Fisher 0438 592 920

Principal/Licensee in Charge | tfisher.maitland@ljhooker.com.au

LJ Hooker Maitland (02) 4933 5511

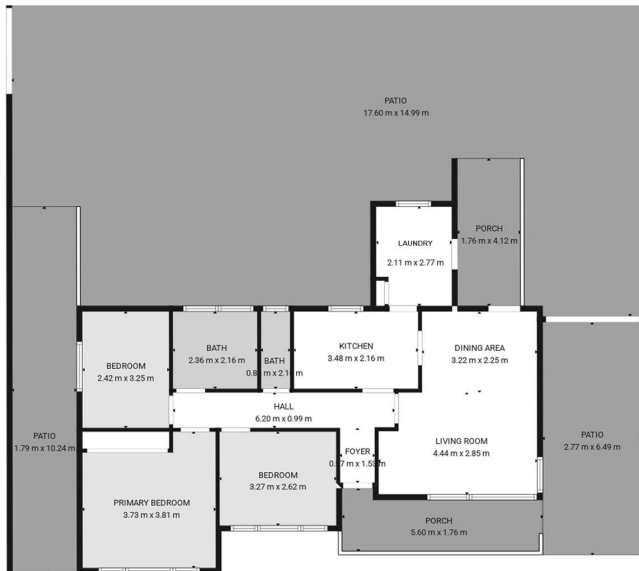
24 Ken Tubman Drive, MAITLAND NSW 2320

maitland.ljhooker.com.au | maitland@ljhooker.com.au



LJ Hooker Maitland
(02) 4933 5511

Disclaimer: All information contained therein is gathered from relevant third parties sources. We cannot guarantee or give any warranty about the information provided. Interested parties must rely solely on their own enquiries.



TOTAL: 76 m2
FLOOR 1: 76 m2
EXCLUDED AREAS: ENTRY: 6 m2, GARAGE: 26 m2, STORAGE: 14 m2,
PATIO: 173 m2, PORCH: 16 m2, YARD: 430 m2

FLOOR PLAN CREATED BY CUBICASA APP. MEASUREMENTS DEEMED HIGHLY RELIABLE BUT NOT GUARANTEED.

FLOOR PLAN

12 Goldingham St
Tenambit

DISCLAIMER: Plans shown are for presentation purposes only and not part of any legal document or title. They are subject to errors, omissions, inaccuracies and should not be used as a sole and accurate reference. Interested parties should make their own inquiries using independent sources.



LJ Hooker Maitland
(02) 4933 5511

Disclaimer: All information contained therein is gathered from relevant third parties sources. We cannot guarantee or give any warranty about the information provided. Interested parties must rely solely on their own enquiries.