



Temuka, 297 Milford Clandeboye Road

This Changes Everything!

This property works for families, great for lovers of pets, with an excellent outdoor area 3,981m2 of play space! Views to the mountains, the back deck area is private and simply looks to farmland. A blank canvas to do whatever you like, plant out the veggies or pop the chickens in! Older style sheds to accommodate machinery or vehicles, plus large areas for storing or parking, great if you're in the digger business!

The home itself is an earlier 2000s build with four large bedrooms. The kitchen/dining and lounge are a brilliant size to enjoy. Fire on a wetback to warm the area plus the sun streams in on this low maintenance property. The roof has been replaced, all you need is to join in the lifestyle on an affordable step to the good life. Hey, a little polish to this one and some clever landscaping - you will have an absolute gem!

Close to the Temuka township, schools, Fonterra and the river.

Interested? Book a private viewing.



Disclaimer: All information contained therein is gathered from relevant third parties sources. We cannot guarantee or give any warranty about the information provided. Interested parties must rely solely on their own enquiries.

4

1

1

For Sale

Enquiries Over \$599,000

View

ljhooker.co.nz/150EGTA

Contact

Andrea Clegg

021 115 6403

andrea.timaru@ljhooker.co.nz

LJ Hooker Timaru

(03) 688 3029

Enting Real Estate Limited

Disclaimer:

This information has been supplied by the owners and Corelogic. LJ Hooker Timaru, Geraldine and Waimate are merely passing over this information as supplied to us. We cannot guarantee its accuracy and reliability as we have not checked, audited or reviewed the information. All intending purchasers are advised to conduct their own due diligence investigation into this information. To the maximum extent permitted by law, we do not accept any responsibility to any part for the accuracy or use of the information herein. Enting Real Estate Limited Licensed (REAA 2008).

More About this Property

Property ID	150EGTA
Property Type	House
House Size	160 m ²
Land Area	3981 m ²
Licensed Real Estate Agents (REAA2008)	

Andrea Clegg 021 115 6403

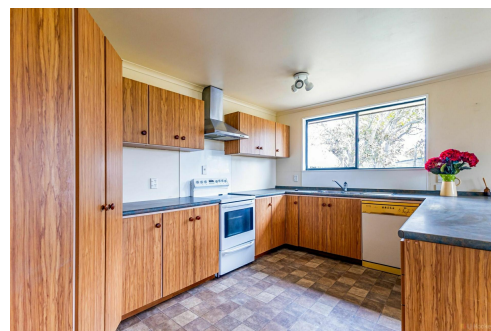
Property Consultant | andrea.timaru@ljhooker.co.nz

LJ Hooker Timaru (03) 688 3029

Enting Real Estate Limited

51 Church Street, TIMARU 7910

timaru.ljhooker.co.nz | timaru@ljhooker.co.nz



Disclaimer: All information contained therein is gathered from relevant third parties sources.

We cannot guarantee or give any warranty about the information provided. Interested parties must rely solely on their own enquiries.

LJ Hooker Timaru

(03) 688 3029

Enting Real Estate Limited