



Te Atatu South, 16 Sylvan Crescent

Owners Moved to Aged Care - URGENT SALE!

PERFECT DOER UPPER!

First time for sale in 65+ years!

The owners have moved to aged care, and now it's your turn to transform this place into your dream home.

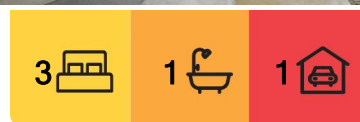
Seize the moment, your opportunity to own a charming Kiwi bungalow, built over 70 years ago. With 3 bedrooms, 1 bathroom, and a single garage, this home is full of promise plus potential capital gain. Perfect for first-time buyers, renovators, or savvy investors.

Key Features:

- Large downstairs basement with plenty of opportunity - make it what you will!
- Garage workshop with internal access



Disclaimer: All information contained therein is gathered from relevant third parties sources. We cannot guarantee or give any warranty about the information provided. Interested parties must rely solely on their own enquiries.



For Sale

Price by negotiation

View

Sat 28th Jun @ 12:00PM - 12:30PM

LJ Hooker Ponsonby
(09) 376 7530
Ponsonby Estate Agents Limited

- Easy-care section
- Sunny, North-facing, spacious lounge
- Replaced to gas hot water in 2012
- Replaced roof in 2012
- Plenty of off-street parking
- Close to supermarkets, popular school zones, and motorway links

This property is seriously for sale. Don't miss your chance to secure a piece of local history and create your ideal living space in a popular location.

More About this Property

Property ID	CYDGUK
Property Type	House
Licensed Real Estate Agents (REAA2008)	

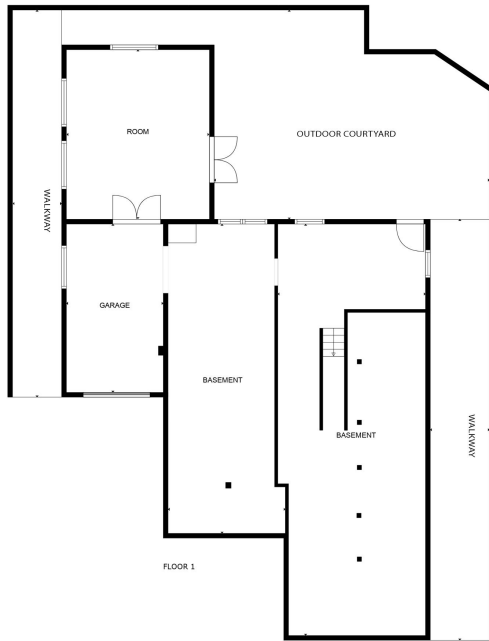
LJ Hooker Ponsonby (09) 376 7530
Ponsonby Estate Agents Limited
53 Ponsonby Road, PONSONBY NZ 1011
ponsonby.ljhooker.co.nz | ponsonby@ljhooker.co.nz



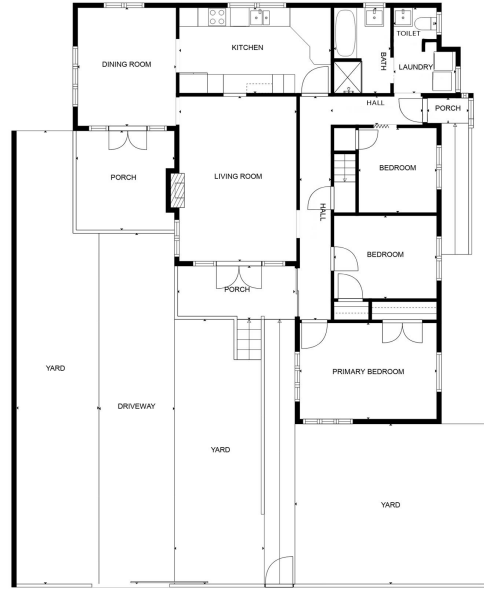
Disclaimer: All information contained therein is gathered from relevant third parties sources. We cannot guarantee or give any warranty about the information provided. Interested parties must rely solely on their own enquiries.

LJ Hooker Ponsonby
(09) 376 7530
Ponsonby Estate Agents Limited

16 SYLVAN CRESCENT



FLOOR 1



FLOOR 2

THIS FLOORPLAN IS PROVIDED WITHOUT WARRANTY OF ANY KIND. SENSOPIA DISCLAIMS ANY WARRANTY INCLUDING, WITHOUT LIMITATION, SATISFACTORY QUALITY OR ACCURACY OF DIMENSIONS.

Floor Plan by
www.fullexposurenz.com