

8 Eugene Street, Tarneit

## Spacious Family Living Across Two Levels

### The Property

Welcome to 8 Eugene Street, Tarneit. This double-storey residence offers a practical layout for family living, comprising five bedrooms, five bathrooms, multiple living zones, feature walls, butler's pantry, and high ceilings throughout. Undercover outdoor areas provide additional space for outdoor living and entertaining. Positioned close to Riverdale Village and surrounded by schools, parks and transport options, the property is well placed for everyday living and access to local amenities.

### The Point of Difference

- Spanning two levels, the home offers multiple living zones, feature wall finishes, decorative columns, a double-height void and high ceilings throughout.
- Comprising five bedrooms and five bathrooms, four bedrooms include their own ensuite, while the main suite features a walk-in robe.
- The kitchen features a large island bench, preparation space, cabinetry, storage and a butler's pantry.
- Situated on a 512m<sup>2</sup> (approx.) allotment, the property includes an undercover alfresco adjoining the living area and a separate

5 5 2

### AUCTION

Sat 11th Jul @ 11:30AM

### VIEW

Sat 20th Jun @ 1:30PM - 2:00PM

### AGENTS

Paul Caine  
0421 551 051  
paul.caine@ljhooker.com.au

Deb Zwierlein  
0400 975 771  
deb.zwierlein@ljhooker.com.au

### AGENCY

LJ Hooker Point Cook  
(03) 9975 7080

All information contained therein is gathered from relevant third parties sources. We cannot guarantee or give any warranty about the information provided. Interested parties must rely solely on their own enquiries.



- undercover timber deck, complemented by landscaped gardens.
- Additional highlights include a timber staircase, separate laundry with linen storage, ducted heating and cooling, downlights throughout, flooring, storage and double garage accommodation with internal access.

#### The Point of Interest

Surrounded by a wealth of lifestyle amenities, this location places shopping, dining, quality schools and recreational facilities within close proximity. Riverdale Village is only moments away, while nearby parks, reserves, wetlands, walking trails and sporting facilities provide plenty of opportunities to enjoy the outdoors. Zoned to Brinbeal Secondary College and Barayip Primary School, with Tarneit Train Station, local bus services and easy freeway access, all within easy reach.

Note. All stated dimensions are approximate only. Particulars given are for general information only and do not constitute any representation on the part of the vendor or agent. Any school zoning stated based is on [www.findmyschool.vic.gov.au](http://www.findmyschool.vic.gov.au) as of 14/06/26.

#### MORE DETAILS

Property ID	2JNUHGH
Property Type	House
Land Area	512 m2

#### Paul Caine 0421 551 051

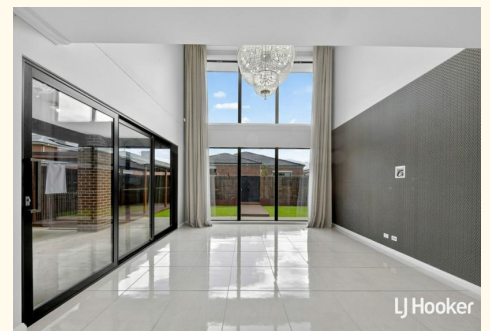
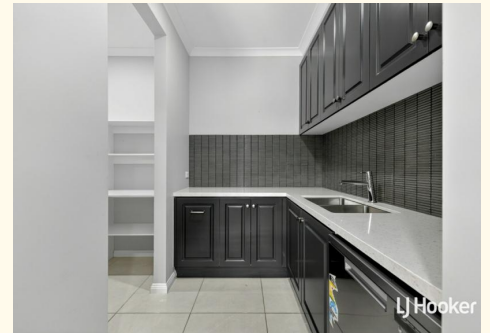
Director | Licensed Estate Agent | Auctioneer |  
[paul.caine@ljhooker.com.au](mailto:paul.caine@ljhooker.com.au)

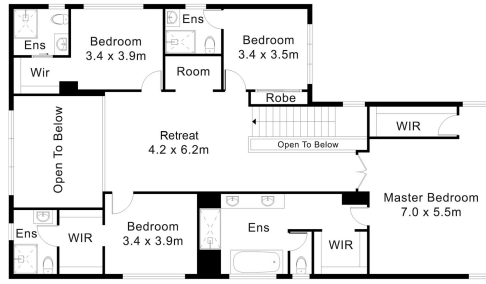
#### Deb Zwierlein 0400 975 771

Sales Consultant | [deb.zwierlein@ljhooker.com.au](mailto:deb.zwierlein@ljhooker.com.au)

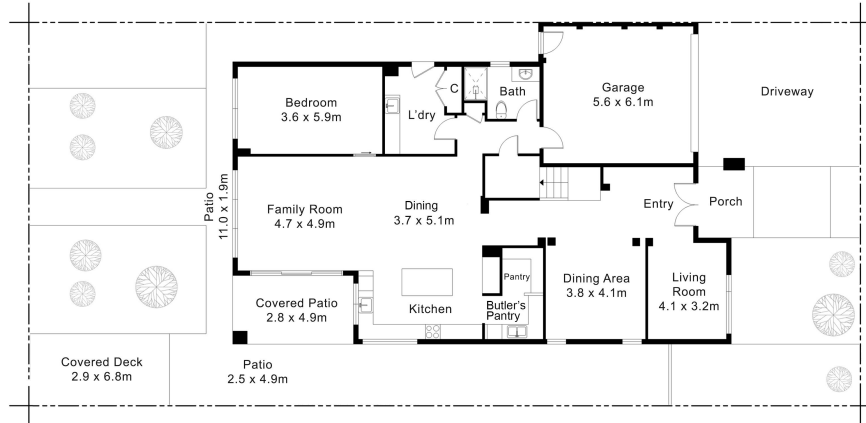
#### LJ Hooker Point Cook (03) 9975 7080

Shop 211, 4 Main Street, POINT COOK VIC 3030  
[pointcook.ljhooker.com.au](http://pointcook.ljhooker.com.au) | [pointcook@ljhooker.com.au](mailto:pointcook@ljhooker.com.au)





FIRST FLOOR PLAN



GROUND FLOOR PLAN

This floor plan including furniture, fixture measurements and dimensions are approximate and for illustrative purposes only. Pitch Digital gives no guarantee, warranty or representation as to the accuracy of the layout and layout. All enquiries must be directed to the agent, vendor or party representing this floor plan.

