



44 Starling Avenue, Tarneit

"44 Starling Avenue, Tarneit" — Modern Comfort Meets Effortless Living Approx. Land Size: 587 m²

Welcome to 44 Starling Avenue, Tarneit—a stylish single-level home designed to accommodate modern living with ease. From its spacious floor plan to its thoughtful layout, every detail of this property has been crafted to offer comfort, functionality, and a relaxed lifestyle on approximately 587 m² of land.

Key Features:


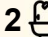
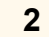
1. Multiple Living Areas

- Enjoy two distinct living spaces, perfect for hosting guests or creating separate zones for work, study, and relaxation. The front living room offers a welcoming space for casual gatherings, while the open-plan living area at the rear seamlessly connects to the kitchen and meals zone.

2. Well-Appointed Kitchen & Meals Area

- The centrally positioned kitchen boasts ample storage, quality appliances, and a generous meals area, ensuring you have everything you need for both everyday dining and entertaining.

3. Comfortable Bedrooms

4  2  2 

FOR SALE
\$650000-\$680000

AGENTS

Yannie Hou
0416 868 512
yhou.rowville@ljhooker.com.au

AGENCY

LJ Hooker City Residential
(03) 9600 2166

All information contained therein is gathered from relevant third parties sources.
We cannot guarantee or give any warranty about the information provided.
Interested parties must rely solely on their own enquiries.

 **LJ Hooker**

- The master bedroom, complete with an ensuite and built-in or walk-in wardrobe, provides a private retreat. Additional bedrooms (each with its own built-in storage) share a well-appointed family bathroom, making this home ideal for families or those who frequently welcome overnight guests.

4. Practical Laundry & Storage

- A conveniently located laundry room helps keep household tasks out of sight yet easily accessible, and built-in robes ensure there's plenty of storage throughout.

5. Double Garage

- The secure double garage not only accommodates two vehicles but also offers extra space for tools, equipment, or additional storage needs.

6. Outdoor Appeal

- " The site plan highlights a generous yard space on an approximately 587 m² block, with potential for gardening, outdoor dining, or simply enjoying the fresh air. The covered porch and driveway provide a welcoming entrance, while the overall positioning maximizes privacy.

Why You'll Love Living Here:

- **Prime Location:** Situated in the heart of Tarneit, you'll have convenient access to schools, parks, shopping centers, and public transport links, making everyday errands and commutes a breeze.
- **Family-Friendly Setting:** With a quiet neighborhood atmosphere and nearby recreational facilities, this home is perfect for families seeking both comfort and convenience.
- **Move-In Ready:** Thoughtful design and modern features ensure you can settle in straight away .

Disclaimer:

All dimensions are approximate and for illustrative purposes only. The exact layout and measurements may vary.

MORE DETAILS

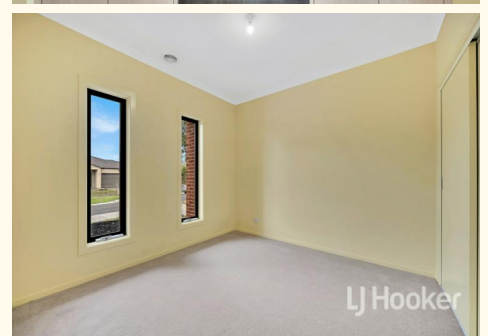
Property ID K2QHC2
Property Type House

Yannie Hou 0416 868 512

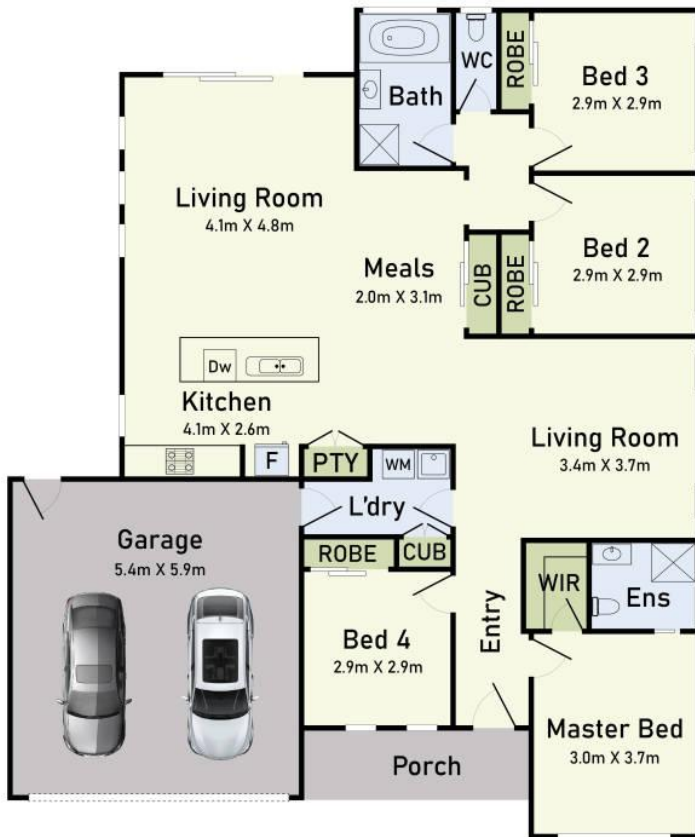
Senior Property Consultant | yhou.rowville@ljhooker.com.au

LJ Hooker City Residential (03) 9600 2166

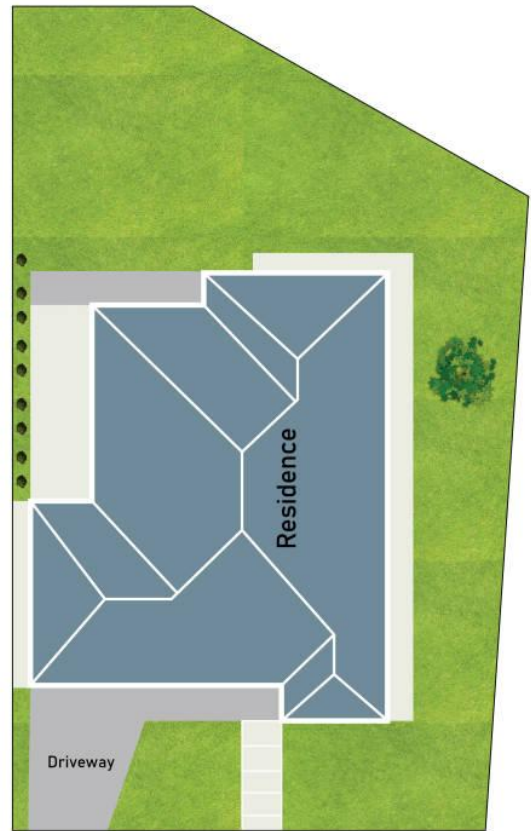
Upper Ground Floor, 439-445 Lonsdale St, MELBOURNE VIC 3000
cityresmelbourne.ljhooker.com.au |
cityresmelbourne@ljhooker.com.au



Floor Plan



Site Plan



44 Starling Avenue, Tarneit

* Dimensions are approximate and for illustrative purposes only

