



48 Gilbert Street, Tarlee

7 🏠 5 🚗 4 🚘

## Own the Iconic Tarlee Motel - A Rare Lifestyle & Business Opportunity!

Nestled in the heart of Tarlee, just 80km north of Adelaide and perfectly positioned between the Barossa and Clare Valleys, lies a once-in-a-lifetime opportunity: the chance to own the historic Tarlee Motel.

48 Gilbert Street - The Tarlee Motel

Steeped in history and bursting with character, this grand 1860s stone-fronted residence isn't just a home - it's a potential business and lifestyle all in one. Inside, discover soaring ceilings, ornate fireplaces, multiple living zones, a cellar, and an upstairs master suite with balcony views - a property designed to impress and inspire.

The magic continues outdoors:

- Four fully self-contained guest cabins (furniture included)
- Lush gardens with spa and water feature
- Extensive shedding and solar system
- Flexible layout for family living, guest stays, or dual income streams

Whether you want to continue trading as the Tarlee Motel, create

**FOR SALE**  
UNDER CONTRACT BY ANDREW ROSE

### AGENTS

Andrew Rose  
0421 988 597  
andrew.rose@ljhces.com.au

James Frencken  
0476 871 921  
james.frencken@ljhces.com.au

### AGENCY

LJ Hooker Craigmore | Elizabeth | Salisbury  
(08) 8255 9555

All information contained therein is gathered from relevant third parties sources. We cannot guarantee or give any warranty about the information provided. Interested parties must rely solely on their own enquiries.



your own boutique accommodation, or simply enjoy the grandeur for yourself, the possibilities here are endless. With a current liquor licence covering most of the property, there's also the exciting potential to operate a restaurant alongside guest accommodation - making this a truly unique lifestyle and investment opportunity.

#### 46 Gilbert Street - Stone Cottage

Right next door, you'll also find a charming 1920s stone cottage on 988sqm. With a cosy lounge, spacious country kitchen, updated bathroom, and powered sheds, it's ideal as a family home, rental, staff accommodation or Air BnB.

Two titles. Two properties. One incredible opportunity. Lifestyle, investment, and income potential all in one package - opportunities like this simply don't come around often.

To arrange an inspection, simply submit your enquiry and we'll be in touch to confirm a convenient time. Once received, you'll also receive a detailed email with full property specifications.

Contact Andrew Rose today and make the Tarlee Motel your future!

#### Disclaimer:

We have in preparing this document used our best endeavours to ensure the information contained is true and accurate, but accept no responsibility and disclaim all liability in respect to any errors, omissions, inaccuracies or misstatements contained. Prospective purchasers should make their own enquiries to verify the information contained in this document.

RLA155355

#### MORE DETAILS

Property ID                    67RDFDC  
Property Type                House

#### Andrew Rose 0421 988 597

Senior Sales Representative | [andrew.rose@ljhces.com.au](mailto:andrew.rose@ljhces.com.au)

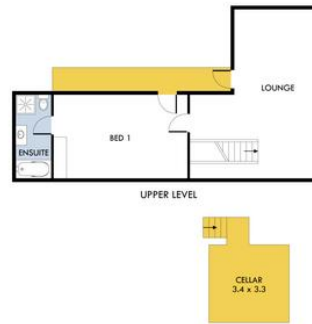
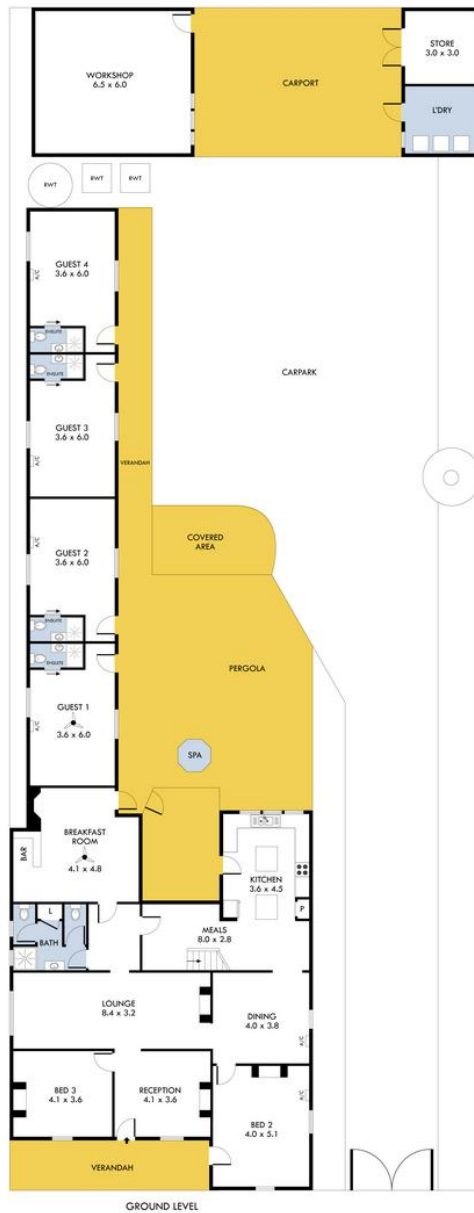
#### James Frencken 0476 871 921

Sales Representative | [james.frencken@ljhces.com.au](mailto:james.frencken@ljhces.com.au)

#### LJ Hooker Craigmore | Elizabeth | Salisbury (08) 8255 9555

Shop 17, Craigmore Village, Yorktown Road, CRAIGMORE SA 5114  
[craigmoreelizabeth.ljhooker.com.au](http://craigmoreelizabeth.ljhooker.com.au) | [Office@ljhces.com.au](mailto:Office@ljhces.com.au)





INTERNAL - 374.7 SQM  
 EXTERNAL - 238.5 SQM  
 TOTAL - 613.2 SQM

## 48 Gilbert Street, Tarlee

Please Note: Every care has been taken to verify the correctness of the areas and details used in this leaflet. No warranty or representation is given or made as to the correctness of the information supplied and neither the owners, illustrator nor the Agent accept responsibility for errors or omissions. The sketch is for illustration purposes only and intending purchasers should satisfy themselves independently regarding sizes, layout and location of the property. Please check with local council that all structures are approved by council.