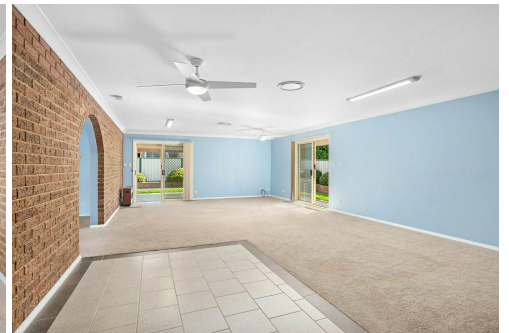




Approximate Boundary



## Taree, 7 Court Place

### Exceptionally Well Presented Home with Outstanding Features

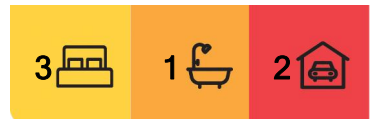
When you arrive at this property, you'll quickly realise that the description of 'immaculate' barely does it justice. Nestled on a meticulously maintained, low-maintenance level block adorned with beautifully manicured gardens and lawns, this exceptional low-set brick and tile home is sure to leave a lasting impression. Our Vendor has maintained the property to the highest of standards and this is evident by the quality throughout the home.

Situated North-West of Taree's CBD, this charming community of lovely homes offers a convenient location near schools, sporting facilities, parks and the town center. The property features an expansive floor plan with three living areas, complemented by solar panels and a Tesla battery for energy efficiency.

Our Vendor has thoroughly enjoyed their time in this lovely home and is open to considering all genuine offers. We invite you to explore what promises to be one of the



**Disclaimer:** All information contained therein is gathered from relevant third parties sources. We cannot guarantee or give any warranty about the information provided. Interested parties must rely solely on their own enquiries.



**For Sale**  
Offers Invited

**View**  
[ljhooker.com.au/1R43F7G](http://ljhooker.com.au/1R43F7G)

**Contact**  
**Justin Atkins**  
0417 955 176  
[jatkins@ljhtaree.com.au](mailto:jatkins@ljhtaree.com.au)  
**Kelly Sawyer**  
0421 025 081  
[ksawyer@ljhtaree.com.au](mailto:ksawyer@ljhtaree.com.au)

**LJ Hooker Taree**  
**(02) 6552 1133**

best presented properties on the market in 2025. Now, let's take a closer look at its features...

- The front door opens to a tiled entryway, leading seamlessly into the inviting living space, beautifully illuminated by large, ambient windows
- Equipped with ducted air-conditioning throughout, upgraded security screens and doors and electric shutters, this home offers both comfort and peace of mind
- The three spacious bedrooms are all fitted with built-in wardrobes, with the master suite also featuring a ceiling fan
- The large, well-kept kitchen offers an abundance of bench space and storage cupboards, combining practicality with timeless appeal
- Adjacent to the kitchen is a spacious family room and dining area, featuring sliding doors that open to the outdoor patio, along with gas heating and a ceiling fan for added comfort
- Another formal dining room, or third living space, is conveniently located near the kitchen area, complete with a servery
- The three-way bathroom is in excellent condition, with a separate laundry room located at the rear of the home
- The tiled undercover rear patio extends around the back of the home, providing an area for outdoor entertaining with a lovely outlook over the gardens
- A garden shed is situated at the rear for additional storage
- Equipped with solar panels and a Tesla battery system, this property offers enhanced energy efficiency, reducing electricity costs while contributing to a more sustainable lifestyle
- The double lock-up garage offers secure internal access, providing added convenience and safety. It is equipped with a remote-control garage door for easy and secure entry

Nestled at the end of a cul-de-sac on a 565 sqm block, this home boasts exceptional street appeal with its charming brick facade, complemented by established hedges and lawn. Just 1.8 km from the heart of town, it offers both convenience and a quiet location. Don't miss the opportunity to experience this impressive property firsthand. Join us at one of our upcoming open homes or contact Justin Atkins on 0417 955 176 or Kelly Sawyer on 0421 025 081 to arrange a private viewing.



**LJ Hooker Taree**  
**(02) 6552 1133**

**Disclaimer:** All information contained therein is gathered from relevant third parties sources. We cannot guarantee or give any warranty about the information provided. Interested parties must rely solely on their own enquiries.

## More About this Property

<b>Property ID</b>	1R43F7G
<b>Property Type</b>	House
<b>Land Area</b>	565 m2
<b>Including</b>	Air Conditioning Ducted Cooling Ducted Heating Toilets (1) Dishwasher Outdoor Entertaining Built-in-Robes Secure Parking Fully Fenced Remote Garage Solar Panels Solar Hot Water

### Justin Atkins 0417 955 176

Licensed Real Estate Sales Specialist | [jatkins@ljhtaree.com.au](mailto:jatkins@ljhtaree.com.au)

### Kelly Sawyer 0421 025 081

Executive Assistant to Justin Atkins | [ksawyer@ljhtaree.com.au](mailto:ksawyer@ljhtaree.com.au)

### LJ Hooker Taree (02) 6552 1133

227 Victoria Street, TAREE NSW 2430

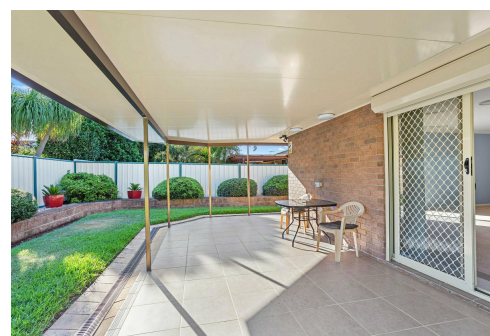
[taree.ljhooker.com.au](http://taree.ljhooker.com.au) | [taree@ljhtaree.com.au](mailto:taree@ljhtaree.com.au)

LJ Hooker



7 Court Place, Taree NSW

This floor plan including fixture measurements and dimensions are approximate and for illustrative purposes only.



**LJ Hooker Taree**  
**(02) 6552 1133**

**Disclaimer:** All information contained therein is gathered from relevant third parties sources. We cannot guarantee or give any warranty about the information provided. Interested parties must rely solely on their own enquiries.