



Tapping, 24/15 Crosthwait Circle

Bright, Spacious & Impeccably Refreshed

Located in the boutique Fusion Complex, this stylish and easy-care 3-bedroom, 2-bathroom home has been newly renovated to offer a fresh, modern feel. With new downlights, carpets, and a fresh coat of paint, the home is light, bright, and move-in ready. Enjoy access to a 15m lap pool, built-in gas BBQ facilities, visitor parking, and direct access to a beautiful park, lake, and nature trail, making it perfect for those who love an active lifestyle.

Designed for effortless living, the home features a spacious master suite with a walk-in robe, ensuite, and reverse-cycle air conditioning, while the open-plan family and meals area flows seamlessly to the modern kitchen, complete with stainless steel appliances, pantry. Two additional bedrooms one built-in sliding robes the other a walk in, bathroom with shower and bath, and a private alfresco courtyard make this home perfect for families, downsizers, or investors. With double remote garage and extra parking, on an easy-care 220m² block.



For Sale
SOLD

View
ljhooker.com.au/JPJHRD

Contact
Luke Calarese
0414 367 854
luke.calarese@ljhooker.com.au



LJ Hooker Joondalup
(08) 9300 2100

Disclaimer: All information contained therein is gathered from relevant third parties sources. We cannot guarantee or give any warranty about the information provided. Interested parties must rely solely on their own enquiries.

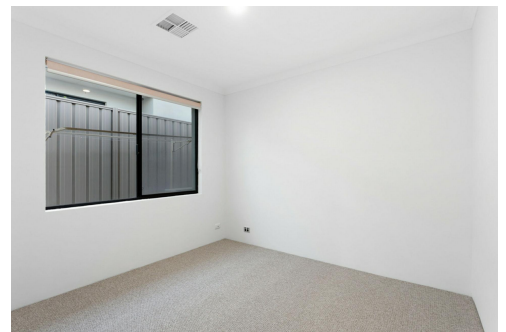
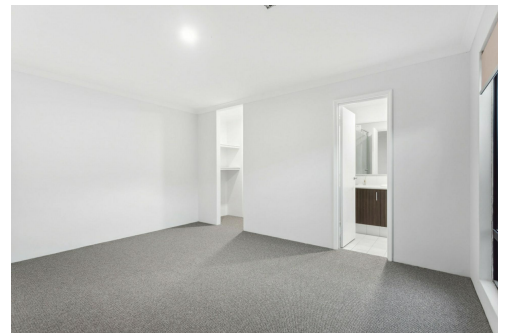
Perfectly positioned close to shops, schools, parks, transport, and essential amenities, this fresh and stylish home won't last long.

More About this Property

Property ID	JPJHRD
Property Type	Villa
House Size	220 m2
Land Area	109 m2
Including	Ensuite Air Conditioning Pool Outdoor Entertaining Remote Garage

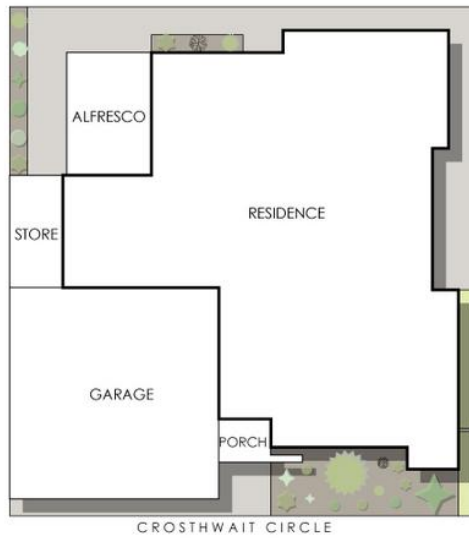
Luke Calarese 0414 367 854
Sales Representative | luke.calarese@ljhooker.com.au

LJ Hooker Joondalup (08) 9300 2100
4/25 Delage Street, JOONDALUP WA 6027
joondalup.ljhooker.com.au | admin.joondalup@ljhooker.com.au



LJ Hooker Joondalup
(08) 9300 2100

Disclaimer: All information contained therein is gathered from relevant third parties sources. We cannot guarantee or give any warranty about the information provided. Interested parties must rely solely on their own enquiries.



Unit 24/15 Crosthwait Circle, Tapping

Residence 96m² | Porch 2m² | Garage 35m² | Store 5m² | Alfresco 8m²
Total Area 146m² | Total Strata Lot 220m²



This floorplan is for illustration purposes only to show the layout of the property. Whilst every effort has been made to ensure the accuracy of the floor plan, all measurements, and any other information shown are an approximate interpretation only. Measurements and lot area do not include or account for walls, fixtures or not shown under cover. C/O Creative will not be held liable or responsible for any error, omission, misrepresentation or use of any information shown on the final floor plan. Not to be used for any other purpose.
www.cofbcreative.com.au